


LOC/DME I-APC 111.3 Chan 50	APP CRS 006°	Rwy Idg TDZE Apt Elev	5930 17 36
--	------------------------	-----------------------------	---------------------------------------

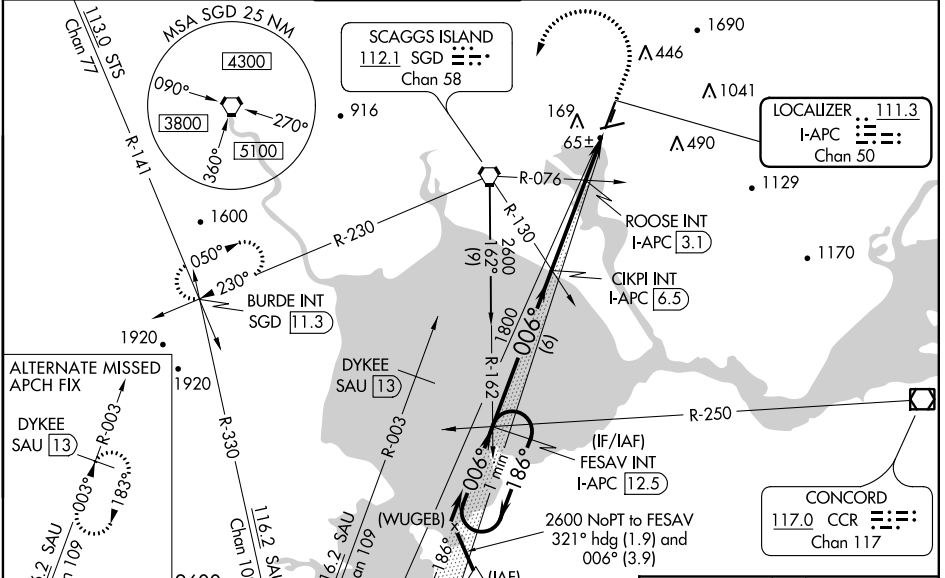
ILS or LOC RWY 36L

NAPA COUNTY (APC)

⚠ When local altimeter setting not received, use Concord altimeter setting and increase all DA 41 feet; increase all MDA 60 feet and visibility Circling Cat B ¼ mile and; increase ROOSE fix minimums S-L 36L visibility Cats C and D ¼ mile, Circling Cat B ¼ mile. VDP NA when using Concord altimeter setting. For inoperative MALS, increase S-LOC Cats C and D visibility ½ mile; increase ROOSE fix S-LOC Cats C and D visibility ¾ mile. When using Concord altimeter setting; for inoperative MALS, increase ROOSE fix S-LOC Cats C and D visibility ½ mile. Autopilot coupled approach NA below 500.

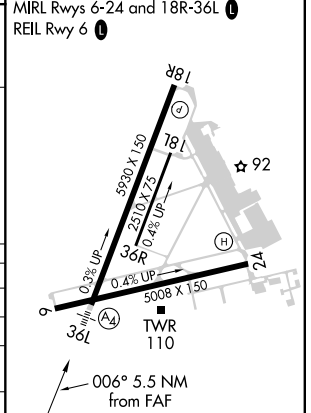
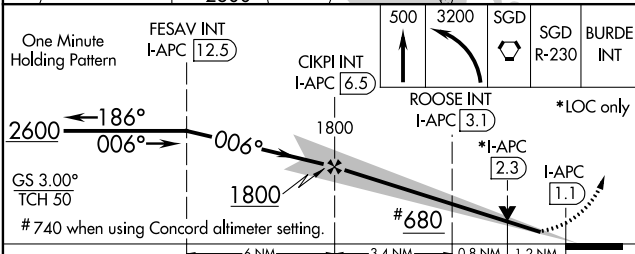
MALS

MISSED APPROACH:
 Climb to 500 then climbing left turn to 3200 direct SGD VORTAC then on SGD R-230 to BURDE INT SGD 11.3 DME and hold.

ATIS 124.05	OAKLAND CENTER 127.8 353.5	NAPA TOWER ★ 118.7 (CTAF) 257.8	GND CON 121.7	CLNC DEL 127.85	UNICOM 122.95
-----------------------	--------------------------------------	---	-------------------------	---------------------------	-------------------------



ELEV 36	TDZE 17
---------	---------

MIRL Rwy 6-24 and 18R-36L
REIL Rwy 6



CATEGORY	A	B	C	D
S-ILS 36L		217-¾	200 (200-¾)	
S-LOC 36L	680-¾	663 (700-¾)	680-1¾	663 (700-1¾)
CIRCLING	700-1 664 (700-1)	820-1 784 (800-1)	920-2¾ 884 (900-2¾)	1180-3 1144 (1200-3)
ROOSE FIX MINIMUMS (DUAL VOR RECEIVERS OR DME REQUIRED)				
S-LOC 36L	460-¾	443 (500-¾)	460-1	443 (500-1)
CIRCLING	700-1 664 (700-1)	820-1 784 (800-1)	920-2¾ 884 (900-2¾)	1180-3 1144 (1200-3)

FAF to MAP 5.5 NM					
Knots	60	90	120	150	180
Min:Sec	5:30	3:40	2:45	2:12	1:50

SW-2, 31 JAN 2019 to 28 FEB 2019

SW-2, 31 JAN 2019 to 28 FEB 2019