

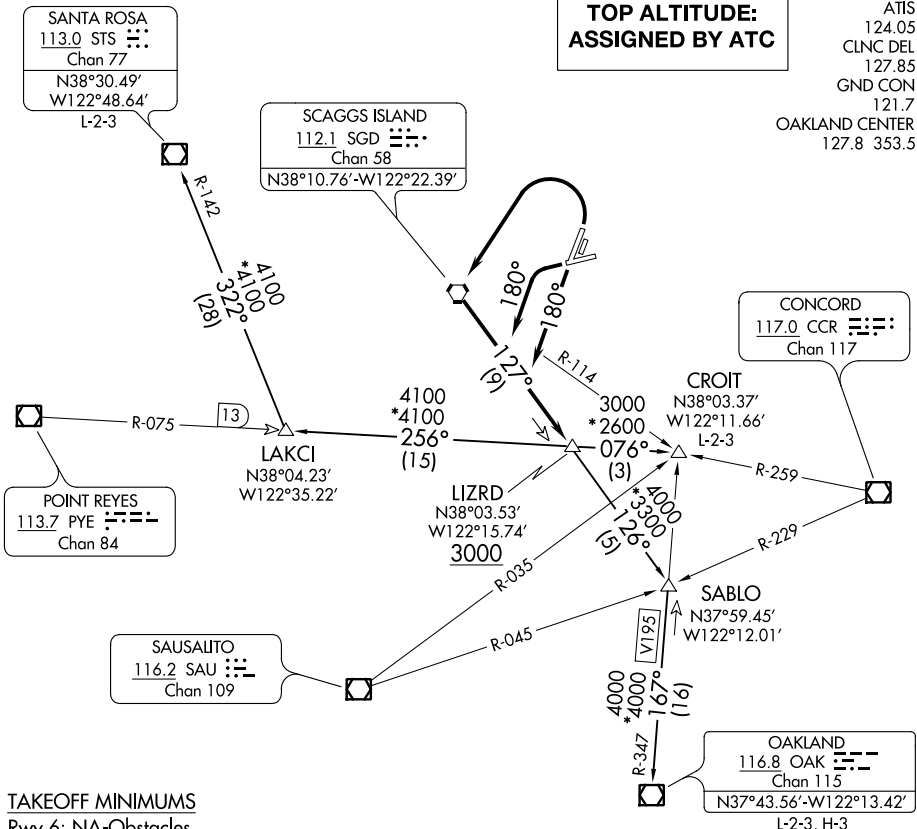
LIZRD FOUR DEPARTURE

AL-281 (FAA)

NAPA COUNTY (APC)
NAPA, CALIFORNIA

ATIS
124.05
CLNC DEL
127.85
GND CON
121.7
OAKLAND CENTER
127.8 353.5

**TOP ALTITUDE:
ASSIGNED BY ATC**



SW-2, 31 JAN 2019 to 28 FEB 2019

SW-2, 31 JAN 2019 to 28 FEB 2019

TAKEOFF MINIMUMS

Rwy 6: NA-Obstacles.

Rwys 18L/R, 36L/R and 24: Standard with the following minimum climb requirements:

Rwys 18L/R: Obstacle climb rate standard, ATC climb rate of 295' per NM to 3000'.

Rwy 24: Obstacle climb rate standard, ATC climb rate of 260' per NM to 3000'.

Rwys 36L/R: Obstacle climb rate of 370' per NM to 1200'.

NOTE: Chart not to scale.

DEPARTURE ROUTE DESCRIPTION

TAKEOFF RUNWAYS 18L/R: Climb via 180° heading to intercept and proceed outbound via the SGD R-127 to LIZRD INT. Cross LIZRD INT at or above 3000'. Thence. . .

TAKEOFF RUNWAY 24: Turn left, climb via 180° heading to intercept and proceed outbound via the SGD R-127 to LIZRD INT. Cross LIZRD INT at or above 3000'. Thence. . .

TAKEOFF RUNWAYS 36L/R: Turn left direct SGD VORTAC, proceed outbound via the SGD R-127 to LIZRD INT. Cross LIZRD INT at or above 3000'. Thence. . .

. . . via (transition) or (assigned route).

CROIT TRANSITION (LIZRD4.CROIT): From over LIZRD INT via PYE R-075 to CROIT INT.

OAKLAND TRANSITION (LIZRD4.OAK): From over LIZRD INT via SGD R-127 and OAK R-347 to OAK VOR/DME.

SANTA ROSA TRANSITION (LIZRD4.STS): From over LIZRD INT via PYE R-075 and STS R-142 to STS VOR/DME.

LIZRD FOUR DEPARTURE

(LIZRD4.LIZRD) 15SEP16

NAPA, CALIFORNIA
NAPA COUNTY (APC)