

WAAS CH 56613 W36A	APP CRS 006°	Rwy ldg TDZE 17 Apt Elev 36	5930
--	------------------------	---	-------------

RNAV (GPS) Y RWY 36L

NAPA COUNTY (APC)

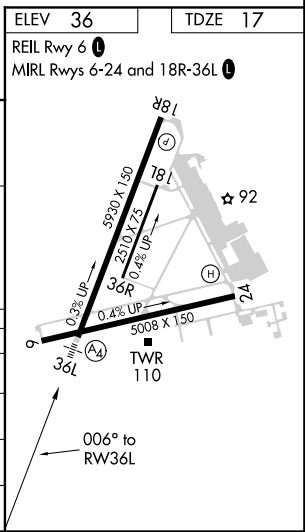
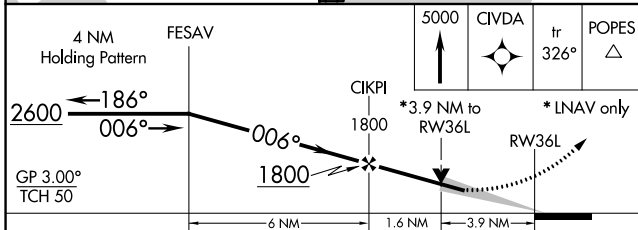
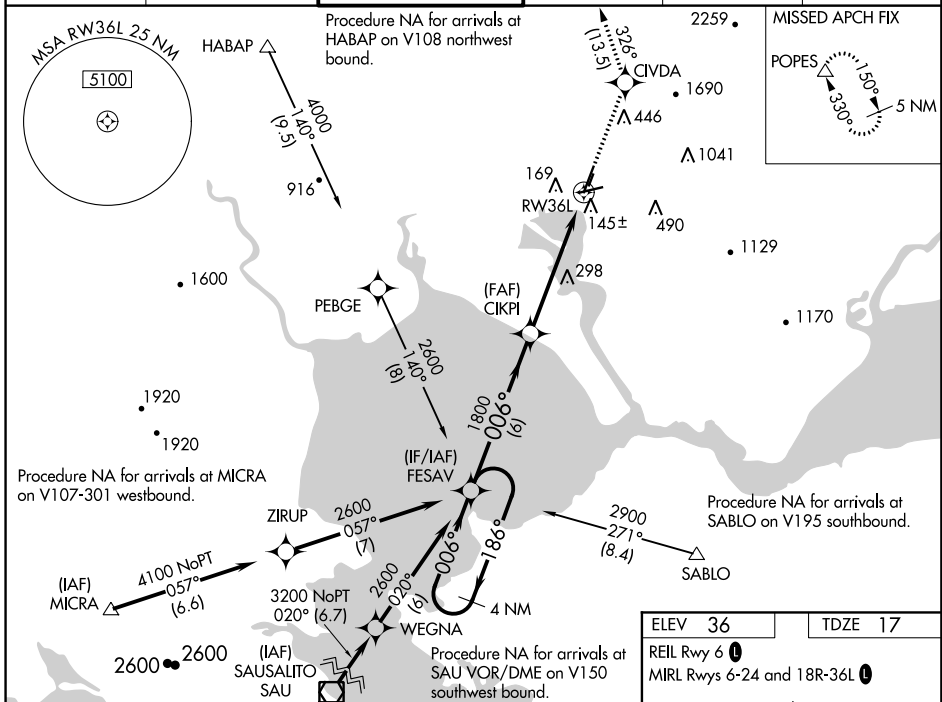
RNP APCH.

▼ Inoperative table does not apply. For uncompensated Baro-VNAV systems, LNAV/VNAV NA below -15°C (5°F) or above 43°C (109°F). When local altimeter setting not received, use Concord altimeter setting and increase all DA 41 feet, all MDA 60 feet. VDP and Baro-VNAV NA when using Concord altimeter setting. Circling NA northeast of Rwy 18R and 24.

▲ MISSED APPROACH: Climb to 5000 direct CIVDA and on track 326° to POPES and hold, continue climb-in-hold to 5000.

MALS

ATIS 124.05	OAKLAND CENTER 127.8 353.5	NAPA TOWER ★ 118.7 (CTAF) 0 257.8	GND CON 121.7	CLNC DEL 127.85	UNICOM 122.95
-----------------------	--------------------------------------	---	-------------------------	---------------------------	-------------------------



CATEGORY	A	B	C	D
LPV DA		1249-5	1232 (1300-5)	
LNAV/VNAV DA		1042-4	1025 (1100-4)	
LNAV MDA	1300-1¼	1283 (1300-1¼)	1300-3	1283 (1300-3)
CIRCLING	1300-1¼ 1264 (1300-1¼)	1300-1½ 1264 (1300-1½)	1300-3	1264 (1300-3)

SW-2, 31 JAN 2019 to 28 FEB 2019

SW-2, 31 JAN 2019 to 28 FEB 2019