

WAAS CH <b>40313</b> <b>W36B</b>	APP CRS <b>006°</b>	Rwy Idg TDZE Apt Elev	<b>5930</b> <b>17</b> <b>35</b>
--	------------------------	-----------------------------	---------------------------------------

# RNAV (GPS) Z RWY 36L

NAPA COUNTY (APC)

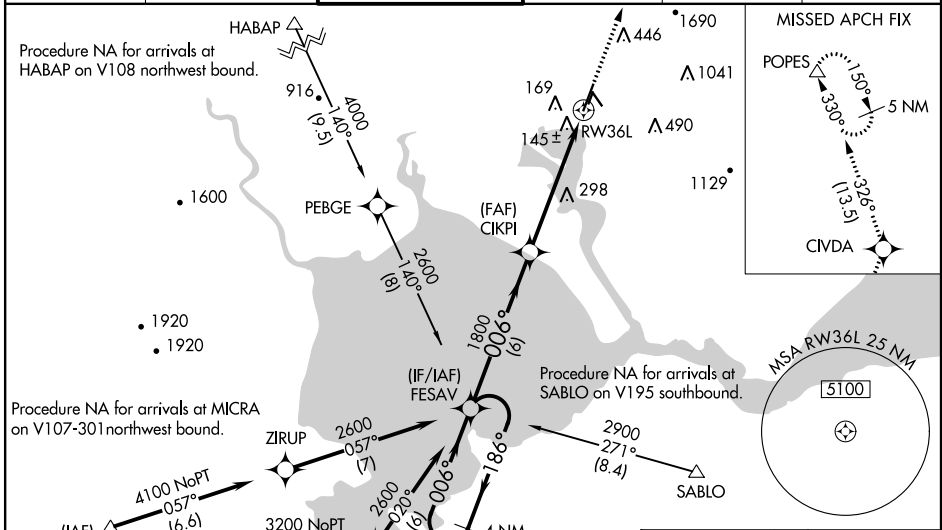
▼ For uncompensated Baro-VNAV systems, LNAV/VNAV NA below -15°C (5°F) or above 43°C (109°F). DME/DME RNP-0.3 NA. When local altimeter setting not received, use Concord altimeter setting and increase all DA 41 feet, all MDA 60 feet, and increase visibility LNAV/VNAV all Cats ½ mile and LNAV Cats C/D and Circling Cat C ¼ mile. VDP and Baro-VNAV NA when using Concord altimeter setting. For inop MALS, increase visibility LNAV/VNAV Cat D ¼ mile and LNAV Cats C/D ⅓ mile. For inop MALS when using Concord altimeter setting, increase visibility LPV all Cats ½ mile, LNAV/VNAV all Cats ⅓ mile, and LNAV Cat D ¼ mile. Missed approach requires minimum climb of 480 feet per NM to 2200. If unable to meet climb gradient see RNAV (GPS) Y RWY 36L.

MALS



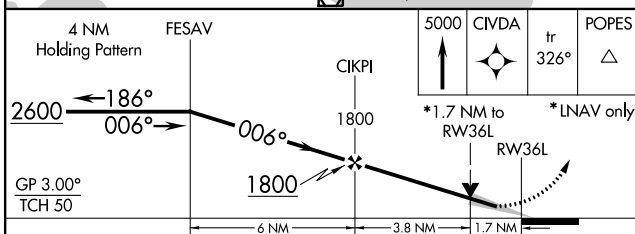
MISSED APPROACH:  
Climb to 5000 direct CIVDA and on track 326° to POPES and hold, continue climb-in-hold to 5000.

ATIS <b>124.05</b>	OAKLAND CENTER <b>127.8 353.5</b>	NAPA TOWER ★ <b>118.7 (CTAF) 0 257.8</b>	GND CON <b>121.7</b>	CLNC DEL <b>127.85</b>	UNICOM <b>122.95</b>
-----------------------	--------------------------------------	---	-------------------------	---------------------------	-------------------------



SW-2, 31 JAN 2019 to 28 FEB 2019

SW-2, 31 JAN 2019 to 28 FEB 2019



CATEGORY	A	B	C	D
LPV DA		267-¾	250 (300-¾)	
LNAV/VNAV DA		372-7/8	355 (400-7/8)	
LNAV MDA	600-¾	583 (600-¾)	600-1¾	583 (600-1¾)
CIRCLING	NA			

