

VORTAC SGD <b>112.1</b> Chan 58	APP CRS <b>050°</b>	Rwy Idg TDZE Apt Elev	<b>5008</b> <b>21</b> <b>35</b>
---------------------------------------	------------------------	-----------------------------	---------------------------------------

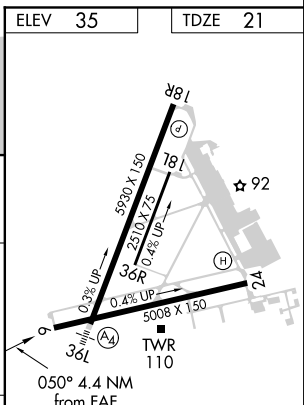
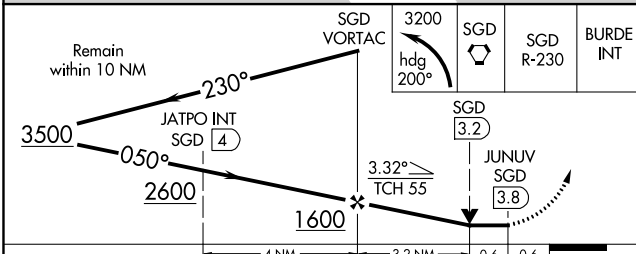
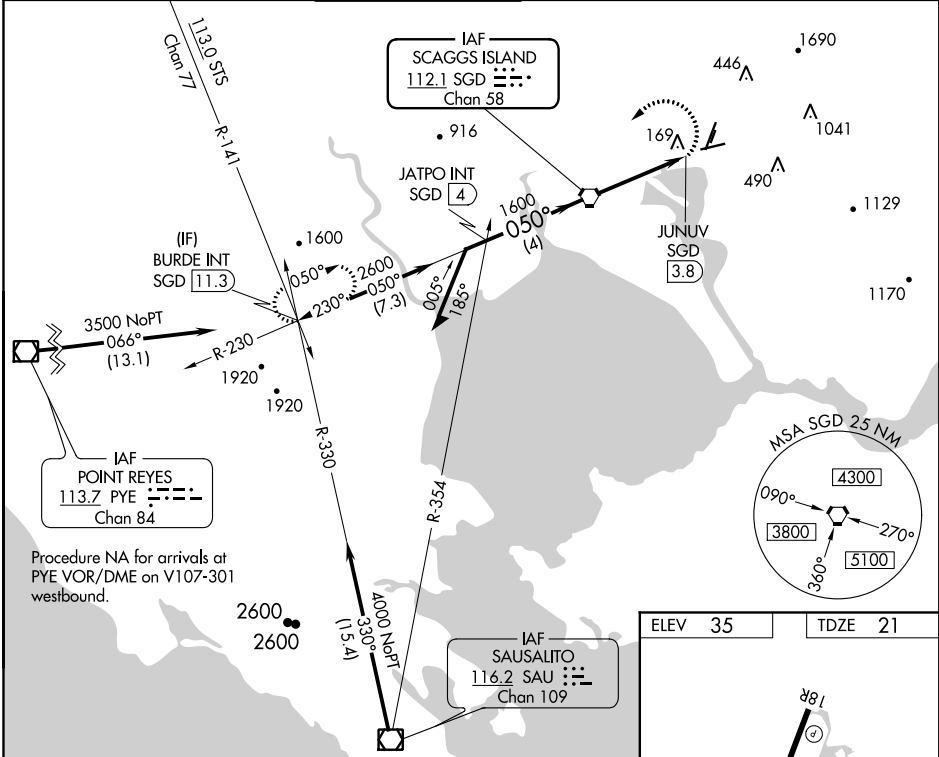
# VOR RWY 6

NAPA COUNTY (APC)

**N** Night Landing: Rwy 6 NA. Circling NA northeast of Rws 18R and 24.  
**A** Helicopter visibility reduction below 1 SM NA. When local altimeter setting not received, use Concord altimeter setting and increase all MDA 60 feet and Circling Cat C visibility ¼ mile. VDP NA with Concord altimeter setting.

**MISSED APPROACH:** Climbing left turn to 3200 on heading 200° to SGD VORTAC R-230 to BURDE INT/SGD 11.3 DME and hold.

ATIS <b>124.05</b>	OAKLAND CENTER <b>127.8 353.5</b>	<b>NAPA TOWER ★</b> <b>118.7 (CTAF) 257.8</b>	GND CON <b>121.7</b>	CLNC DEL <b>127.85</b>	UNICOM <b>122.95</b>
-----------------------	--------------------------------------	--	-------------------------	---------------------------	-------------------------



CATEGORY	A	B	C	D
S-6	460-1	439 (500-1)	460-1 3/8	439 (500-1 3/8)
CIRCLING	600-1 565 (600-1)	620-1 585 (600-1)	720-2 685 (700-2)	1240-3 1205 (1300-3)

ELEV 35	TDZE 21
REIL Rwy 6	
MIRL Rws 6-24 and 18R-36L	
FAF to MAP 3.8 NM	
Knots	60 90 120 150 180
Min:Sec	3:48 2:32 1:54 1:31 1:16

SW-2, 31 JAN 2019 to 28 FEB 2019

SW-2, 31 JAN 2019 to 28 FEB 2019