

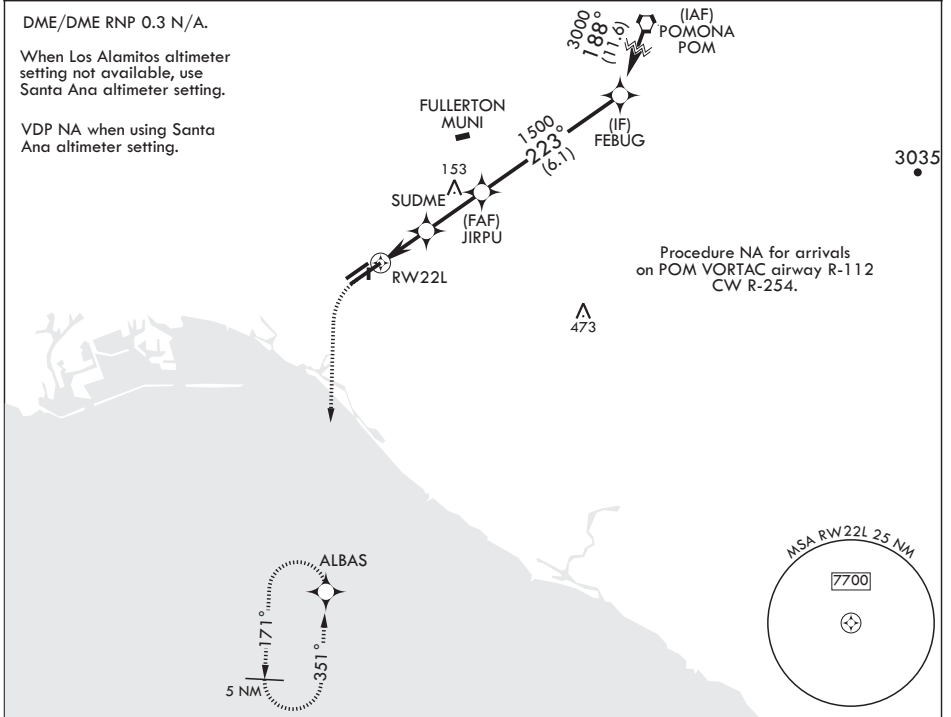
APCH CRS 223°	Rwy Idg 2001
	TDZE 35
	Arpt Elev 35

AL-953 (USA)

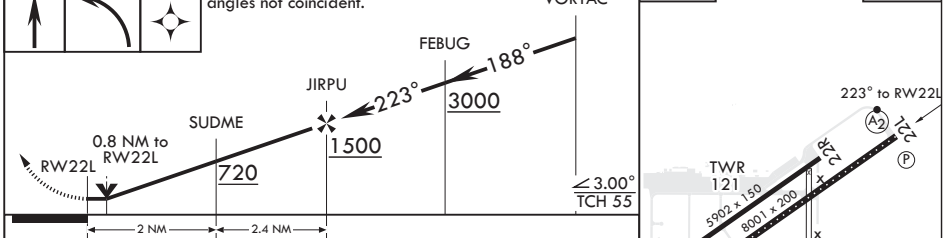
LOS ALAMITOS AAF (KSLI)

<p>* When ALS inop, increase CAT D vis to 1 mile. ** When ALS inop using SANTA ANA altimeter setting, increase CAT D vis to 1 1/8 mile. *** Circling not authorized N of Rwy 4L-22R.</p>	<p>SALS</p>	<p>MISSED APPROACH: Climb to 500 then climbing left turn to 2100 direct ALBAS and hold.</p>
	<p>A2</p>	

<p>ATIS ★ 118.875 379.975</p>	<p>SOCAL APP CON 125.35 316.125</p>	<p>TOWER ★ 123.85 251.15</p>	<p>GND CON 126.95 257.95</p>	<p>ASR/PAR</p>
-----------------------------------	---	----------------------------------	----------------------------------	----------------



			<p>VGSI and descent angles not coincident.</p>	<p>VORTAC</p>	<p>ELEV 35</p>	<p>TDZE 35</p>
--	--	--	--	---------------	----------------	----------------



CATEGORY	A	B	C	D
LNAV MDA*	380-3/4		345	(400-3/4)
CIRCLING***	440-1	500-1	560-1 1/2	680-2
	405 (500-1)	465 (500-1)	525 (600-1 1/2)	645 (700-2)
SANTA ANA ALTIMETER SETTING MINIMUMS				
LNAV MDA**	420-3/4	385 (400-3/4)	420-7/8	385 (400-7/8)
CIRCLING***	480-1	540-1	600-1 1/2	720-2
	445 (500-1)	505 (600-1)	565 (600-1 1/2)	685 (700-2)

HIRL Rwy 4R-22L  
MIRL Rwy 4L-22R  
REIL Rwy 22L

SW-3, 31 JAN 2019 to 28 FEB 2019

SW-3, 31 JAN 2019 to 28 FEB 2019