

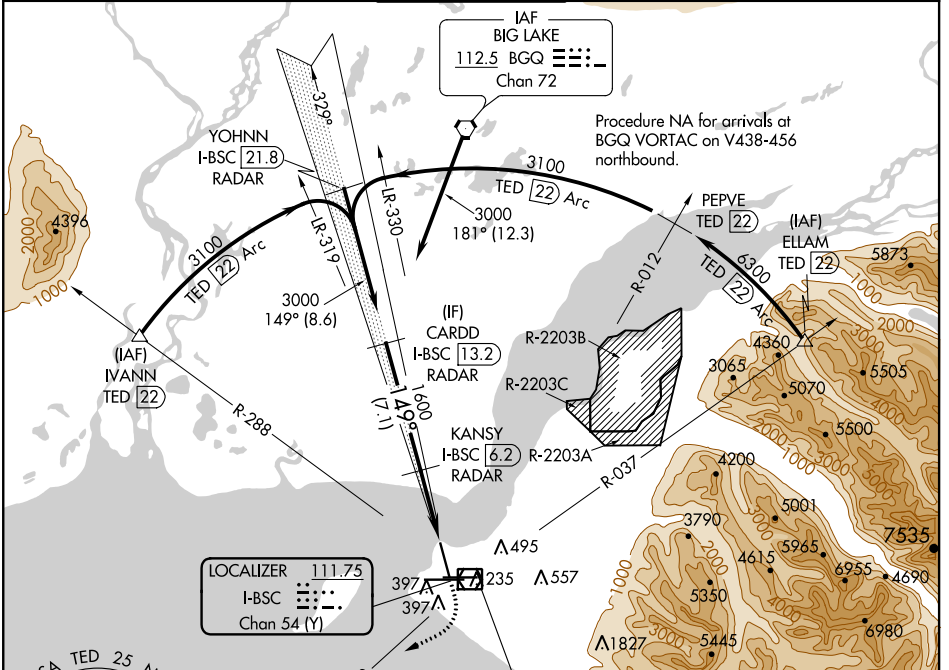
LOC/DME I-BSC 111.75 Chan 54 (Y)	APP CRS 149°	Rwy Idg TDZE Apt Elev	9898 151 151
--	------------------------	-----------------------------	---

ILS RWY 15

TED STEVENS ANCHORAGE INTL (ANC) (PANC)

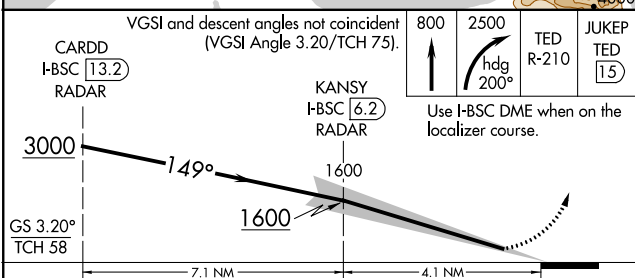
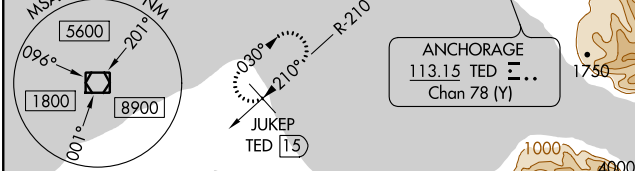
DME required.	ODALS	MISSED APPROACH: Climb to 800 then climbing right turn to 2500 on heading 200° and TED VOR/DME R-210 to JUKEP/TED 15 DME and hold.
▼ Rwy 15 helicopter visibility reduction below RVR 4000 NA. Inop table does not apply.		

D-ATIS 135.5	ANCHORAGE APP CON 118.6 290.5	ANCHORAGE TOWER 118.3 257.8	GND CON 121.9 338.25	CLNC DEL 119.4 323.1
------------------------	---	---------------------------------------	--------------------------------	--------------------------------

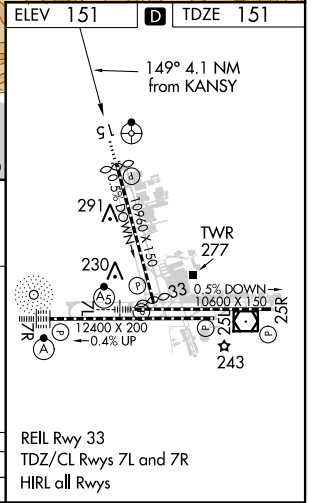


AK, 03 JAN 2019 to 28 FEB 2019

AK, 03 JAN 2019 to 28 FEB 2019



CATEGORY	A	B	C	D
S-ILS 15	351/40	200 (200-¾)	401/40	250 (300-¾)



ILS RWY 15