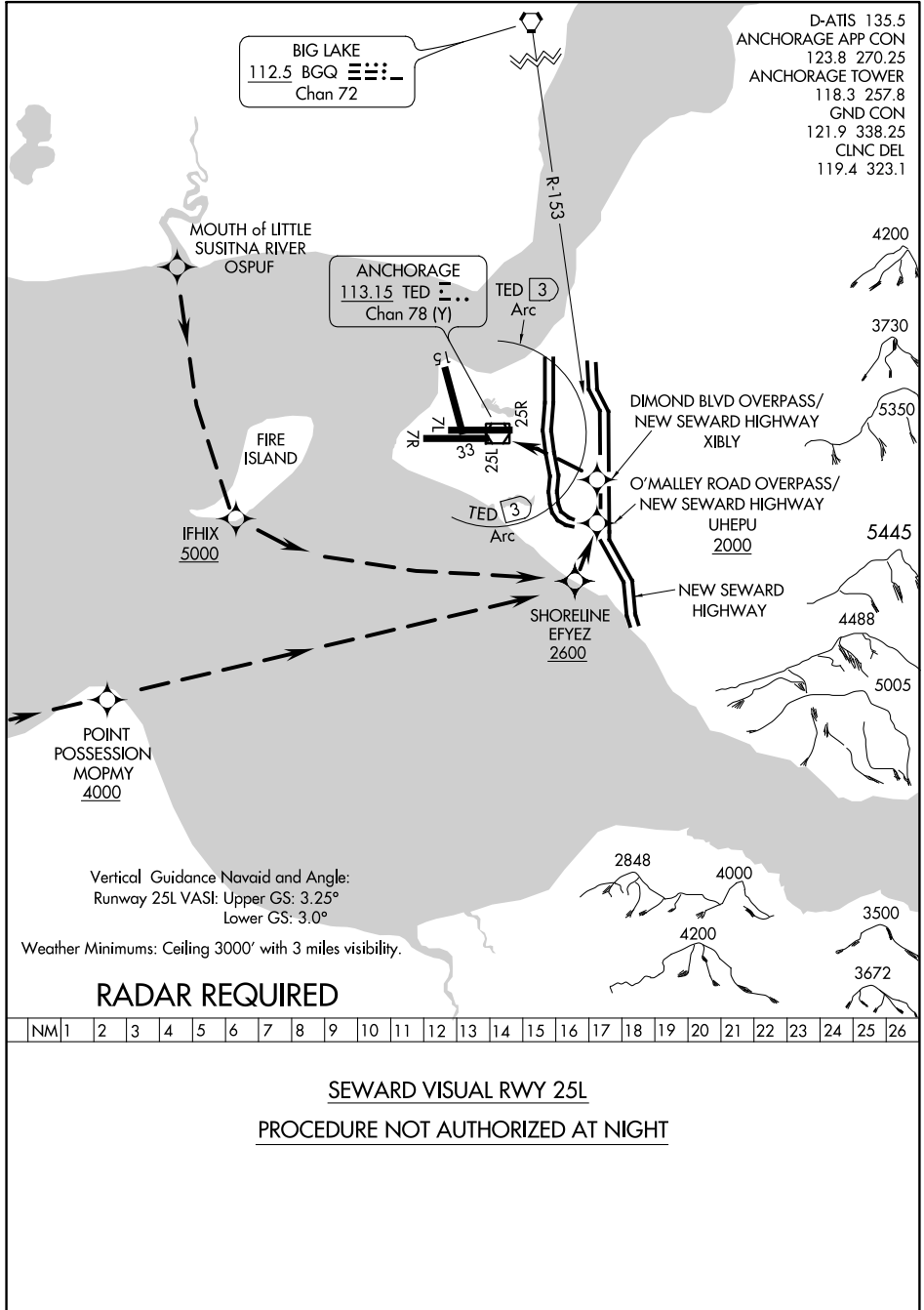


SEWARD VISUAL RWY 25L

TED STEVENS ANCHORAGE INTL (ANC) (PANC)
AL-1500 (FAA) ANCHORAGE, ALASKA



AK, 03 JAN 2019 to 28 FEB 2019

AK, 03 JAN 2019 to 28 FEB 2019

RADAR REQUIRED

SEWARD VISUAL RWY 25L

PROCEDURE NOT AUTHORIZED AT NIGHT

SEWARD VISUAL RWY 25L

61°10'N-150°00'W

ANCHORAGE, ALASKA

TED STEVENS ANCHORAGE INTL (ANC) (PANC)