

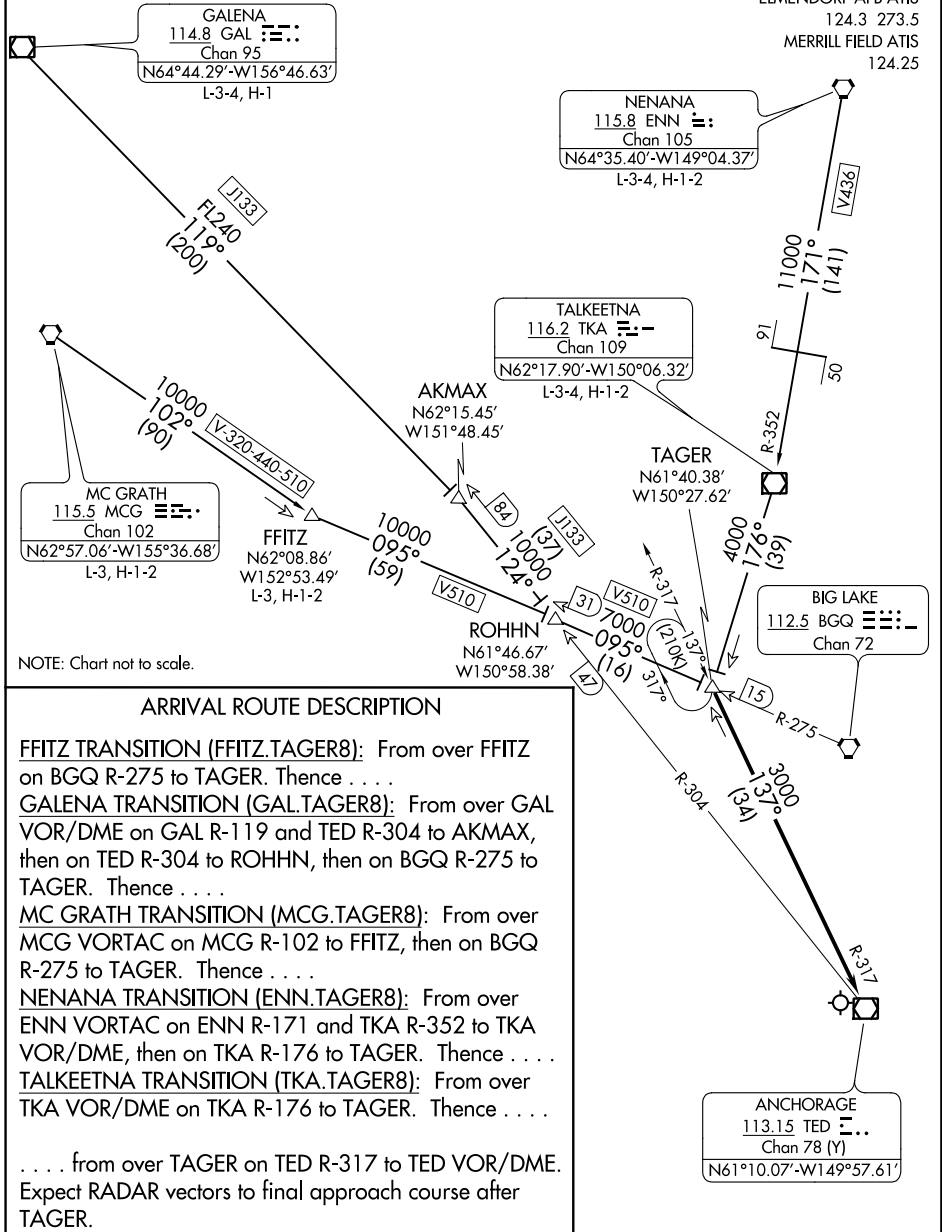
(TAGER.TAGER8) 17117
TAGER EIGHT ARRIVAL

TED STEVENS ANCHORAGE INTL (ANC)(PANC)
 ANCHORAGE, ALASKA

AL-1500 (FAA)

ANCHORAGE APP CON 118.6 290.5
 ANCHORAGE INTL D-ATIS 135.5
 ELMENDORF AFB ATIS * 124.3 273.5
 MERRILL FIELD ATIS 124.25

NOTE: DME required.



ARRIVAL ROUTE DESCRIPTION

FFITZ TRANSITION (FFITZ.TAGER8): From over FFITZ on BGQ R-275 to TAGER. Thence

GALENA TRANSITION (GAL.TAGER8): From over GAL VOR/DME on GAL R-119 and TED R-304 to AKMAX, then on TED R-304 to ROHHN, then on BGQ R-275 to TAGER. Thence

MC GRATH TRANSITION (MCG.TAGER8): From over MCG VORTAC on MCG R-102 to FFITZ, then on BGQ R-275 to TAGER. Thence

NENANA TRANSITION (ENN.TAGER8): From over ENN VORTAC on ENN R-171 and TKA R-352 to TKA VOR/DME, then on TKA R-176 to TAGER. Thence

TALKHEETNA TRANSITION (TKA.TAGER8): From over TKA VOR/DME on TKA R-176 to TAGER. Thence

. . . . from over TAGER on TED R-317 to TED VOR/DME. Expect RADAR vectors to final approach course after TAGER.

AK, 03 JAN 2019 to 28 FEB 2019

AK, 03 JAN 2019 to 28 FEB 2019

TAGER EIGHT ARRIVAL
 (TAGER.TAGER8) 15OCT15

ANCHORAGE, ALASKA
 TED STEVENS ANCHORAGE INTL (ANC)(PANC)