

AKUNA SEVEN DEPARTURE (RNAV)

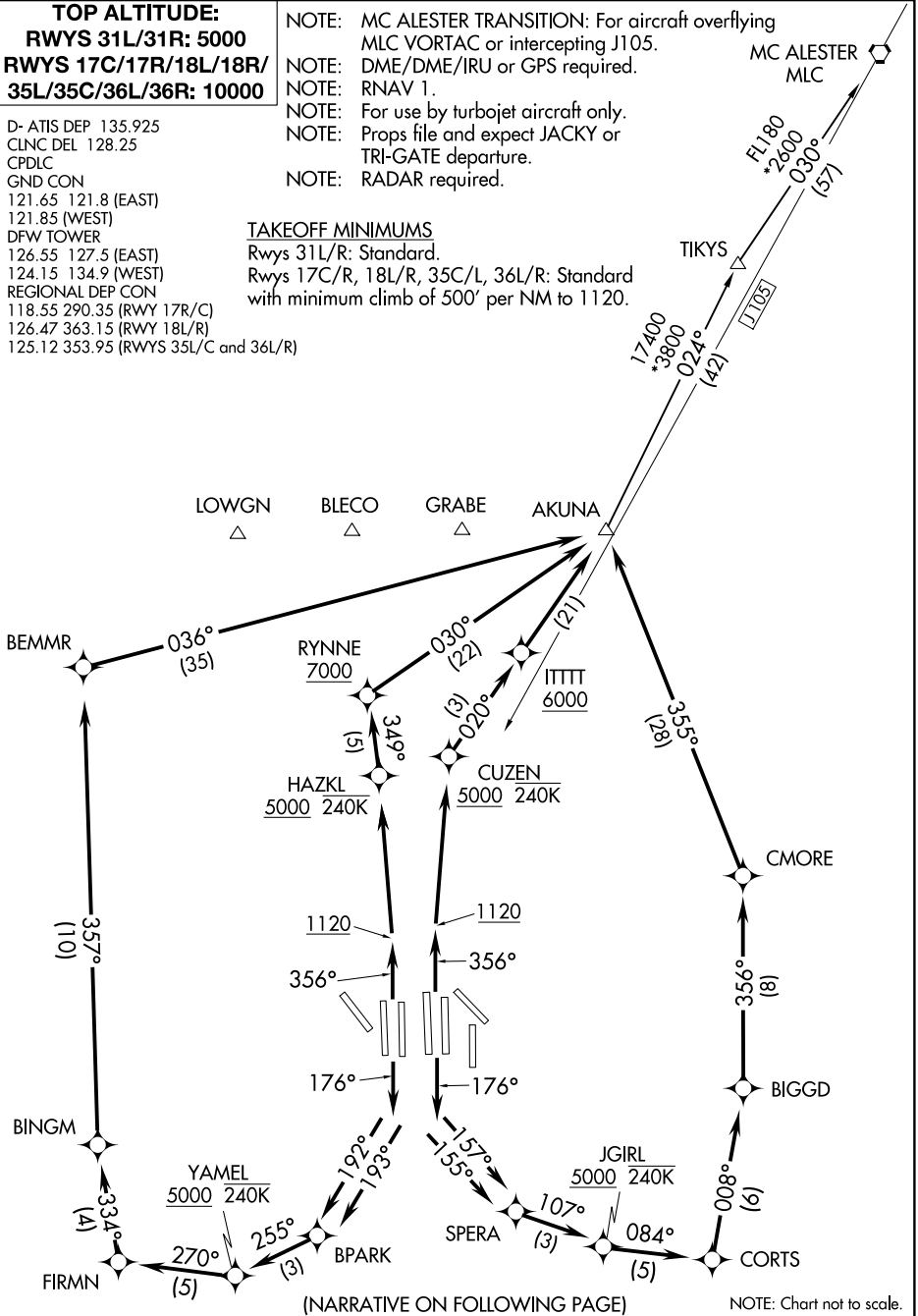
TOP ALTITUDE:
RWYS 31L/31R: 5000
**RWYS 17C/17R/18L/18R/
35L/35C/36L/36R: 10000**

D- ATIS DEP 135.925
CLNC DEL 128.25
CPDLC
GND CON
121.65 121.8 (EAST)
121.85 (WEST)
DFW TOWER
126.55 127.5 (EAST)
124.15 134.9 (WEST)
REGIONAL DEP CON
118.55 290.35 (RWY 17R/C)
126.47 363.15 (RWY 18L/R)
125.12 353.95 (RWYS 35L/C and 36L/R)

NOTE: MC ALESTER TRANSITION: For aircraft overflying
MLC VORTAC or intercepting J105.
NOTE: DME/DME/IRU or GPS required.
NOTE: RNAV 1.
NOTE: For use by turbojet aircraft only.
NOTE: Props file and expect JACKY or
TRI-GATE departure.
NOTE: RADAR required.

TAKEOFF MINIMUMS

Rwys 31L/R: Standard.
Rwys 17C/R, 18L/R, 35C/L, 36L/R: Standard
with minimum climb of 500' per NM to 1120.



(NARRATIVE ON FOLLOWING PAGE)

NOTE: Chart not to scale.

SC-2, 31 JAN 2019 to 28 FEB 2019

SC-2, 31 JAN 2019 to 28 FEB 2019