

ALIAN TWO DEPARTURE (RNAV)

SC-2, 31 JAN 2019 to 28 FEB 2019

D-ATIS DEP 135.925
 CLNC DEL 128.25
 CPDLC
 GND CON
 121.65 121.8 (EAST)
 121.85 (WEST)
 DFW TOWER
 126.55 127.5 (EAST)
 124.15 134.9 (WEST)
 REGIONAL DEP CON
 126.475 363.15

TAKEOFF MINIMUMS
 Rwy 31L/R: Standard
 Rwy 17C/R, 18L/R, 35L/C, 36L/R:
 Standard with minimum climb of 500' per
 NM to 1120.

TOP ALTITUDE:
 RWY 17C/R, 18L/R,
 35C/L, 36L/R: 10000
 RWY 31L/R: 5000



HUDAD
 HRPER

KATZZ

MUTEE

DBLSS

PGIET

TYGGR

RUFFS

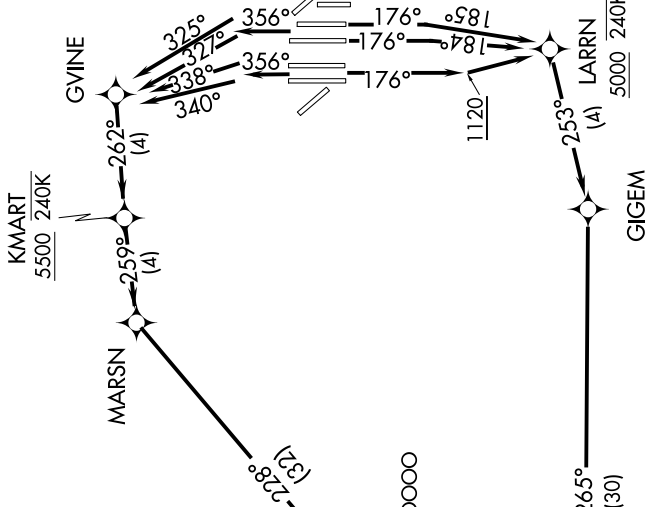
ROOOO

KMART
 5000 240K

MARSN

GVINE

ALIAN 10000
 * 3100
 FUMED 10000
 * 3100
 RBBIT
 WSTEX



NOTE: ATC assigned only.
 NOTE: DME/DME/IRU or GPS required.
 NOTE: RNAV 1.
 NOTE: For use by turbojet aircraft only.
 NOTE: RADAR required.

(NARRATIVE ON FOLLOWING PAGE)

NOTE: Chart not to scale

ALIAN TWO DEPARTURE (RNAV)

SC-2, 31 JAN 2019 to 28 FEB 2019