

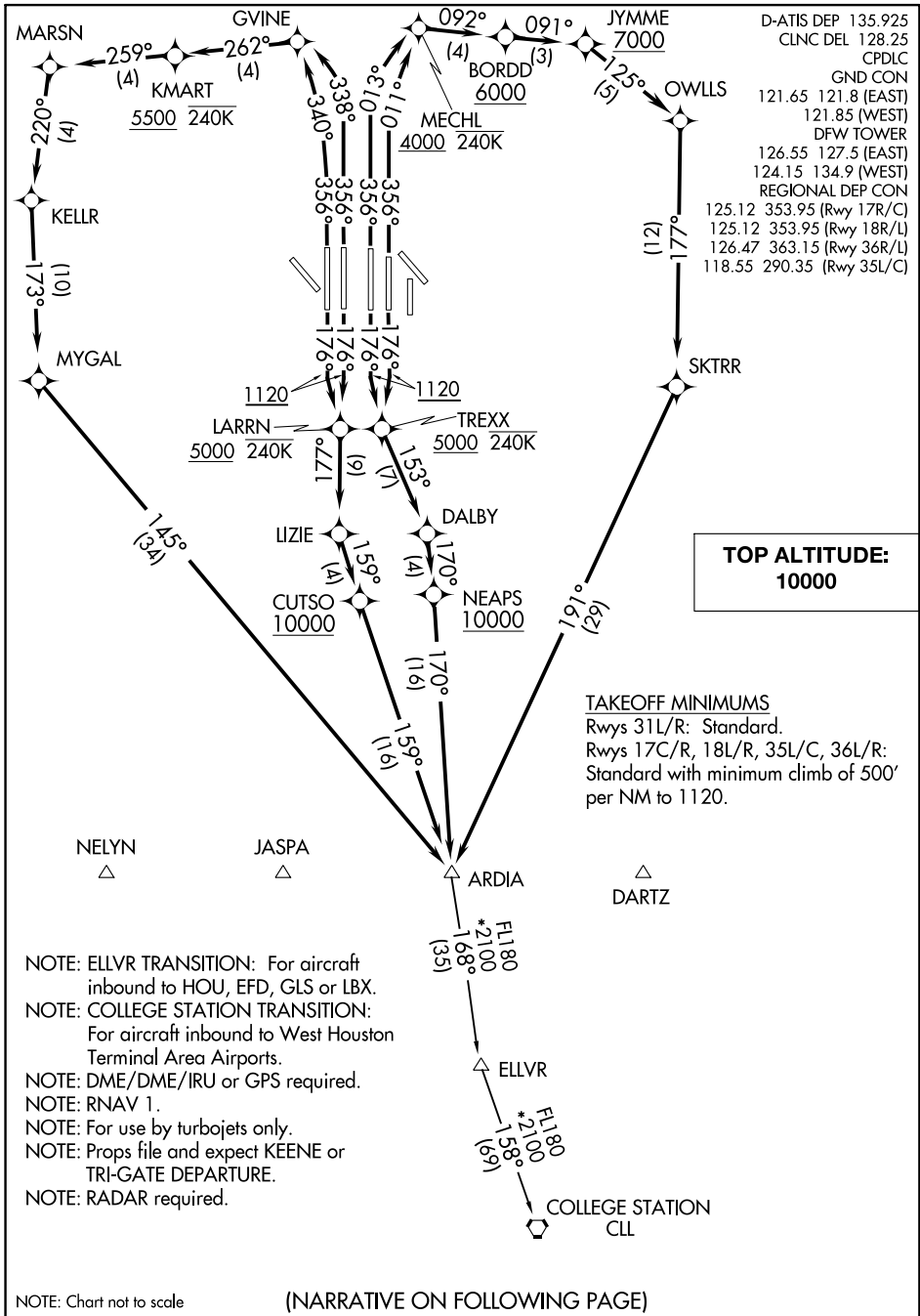
(ARDIA6.ARDIA) 18032

AL-6039 (FAA)

DALLAS-FORT WORTH INTL (DFW)

ARDIA SIX DEPARTURE (RNAV)

DALLAS-FORT WORTH, TEXAS



D-ATIS DEP 135.925
 CLNC DEL 128.25
 CPDLC
 GND CON
 121.65 121.8 (EAST)
 121.85 (WEST)
 DFW TOWER
 126.55 127.5 (EAST)
 124.15 134.9 (WEST)
 REGIONAL DEP CON
 125.12 353.95 (Rwy 17R/C)
 125.12 353.95 (Rwy 18R/L)
 126.47 363.15 (Rwy 36R/L)
 118.55 290.35 (Rwy 35L/C)

SC-2, 31 JAN 2019 to 28 FEB 2019

SC-2, 31 JAN 2019 to 28 FEB 2019

NOTE: Chart not to scale

(NARRATIVE ON FOLLOWING PAGE)

ARDIA SIX DEPARTURE (RNAV)

(ARDIA6.ARDIA) 30APR15

DALLAS-FORT WORTH, TEXAS

DALLAS-FORT WORTH INTL (DFW)