

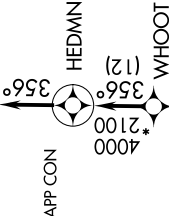
BEREE ONE ARRIVAL (RNAV)

AL-6039 (FAA)

DALLAS-FORT WORTH, TEXAS

SC-2, 31 JAN 2019 to 28 FEB 2019

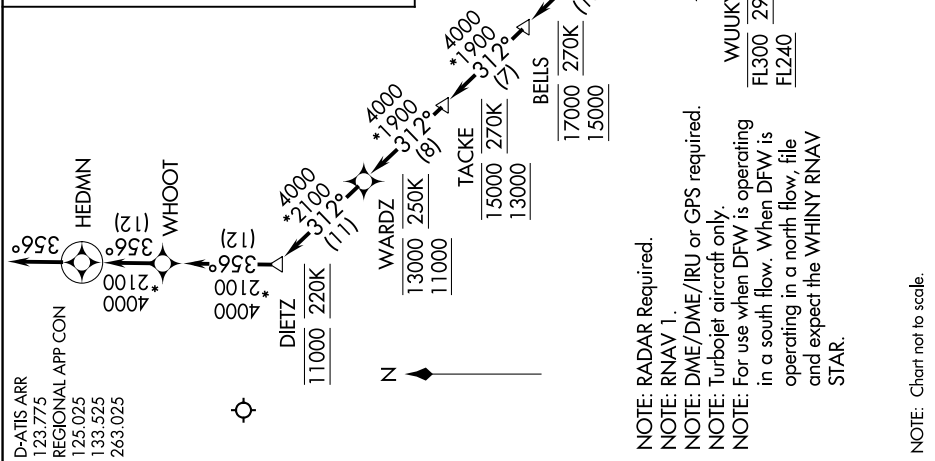
D-ATIS ARR  
123.775  
REGIONAL APP CON  
125.025  
133.525  
263.025



From BEREE on track 312° to cross BELLS between 15000 and 17000 and at 270K, then on track 312° to cross TACKLE between 13000 and 15000 and at 270K, then on track on track 312° to cross WARDZ between 11000 and 13000 and at 250K, then on track 312° to cross DIETZ at 11000 and at 220K, then on track 356° to WHOOT, then on track 356° to HEDMN, then on track 356°. Expect RADAR vectors to final approach course.

ARRIVAL ROUTE DESCRIPTION

- CRIED TRANSITION (CRIED.BEREE1):
- OUTLN TRANSITION (OUTLN.BEREE1): (ATC assigned only.)
- PNUTS TRANSITION (PNUTS.BEREE1):
- POPSY TRANSITION (POPSY.BEREE1): (ATC assigned only.)
- POWND TRANSITION (POWND.BEREE1): (ATC assigned only.)
- STUFT TRANSITION (STUFT.BEREE1):
- YUYUN TRANSITION (YUYUN.BEREE1):



NOTE: RADAR Required.  
 NOTE: RNAV 1.  
 NOTE: DME/DME/IRU or GPS required.  
 NOTE: Turboprop aircraft only.  
 NOTE: For use when DFW is operating in a south flow. When DFW is operating in a north flow, file and expect the WHINY RNAV STAR.

NOTE: Chart not to scale.

SC-2, 31 JAN 2019 to 28 FEB 2019

BEREE ONE ARRIVAL (RNAV)

(BEREE.BEREE1) 26MAY16

DALLAS-FORT WORTH, TEXAS

DALLAS-FORT WORTH INTL (DFW)