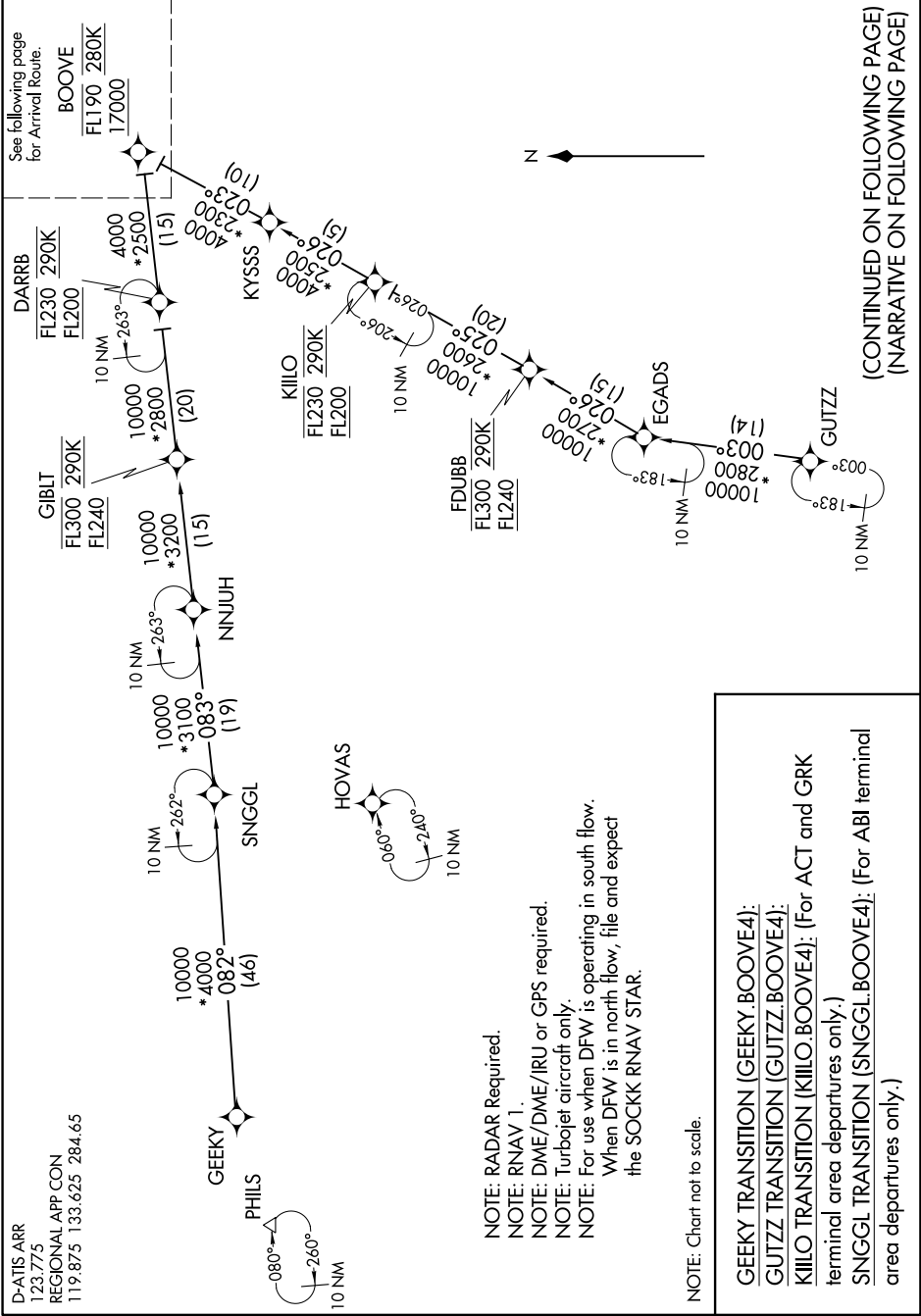


BOOVE FOUR ARRIVAL (RNAV) Transition Routes

SC-2, 31 JAN 2019 to 28 FEB 2019



D-ATIS ARR  
123.775  
REGIONAL APP CON  
119.875 133.625 284.65

- NOTE: RADAR Required.
- NOTE: RNAV 1.
- NOTE: DME/DME/IRU or GPS required.
- NOTE: Turboprop aircraft only.
- NOTE: For use when DFW is operating in south flow.  
When DFW is in north flow, file and expect the SOCKK RNAV STAR.

NOTE: Chart not to scale.

GEEKY TRANSITION (GEEKY.BOOVE4):  
GUTZZ TRANSITION (GUTZZ.BOOVE4):  
KILLSO TRANSITION (KILLSO.BOOVE4): (For ACT and GRK terminal area departures only)  
SNGGL TRANSITION (SNGGL.BOOVE4): (For ABI terminal area departures only.)

(CONTINUED ON FOLLOWING PAGE)  
(NARRATIVE ON FOLLOWING PAGE)

BOOVE FOUR ARRIVAL (RNAV) Transition Routes

SC-2, 31 JAN 2019 to 28 FEB 2019