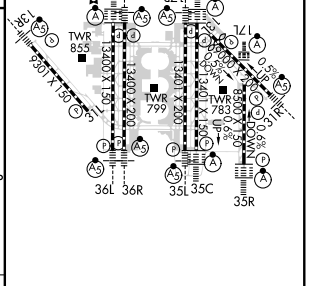
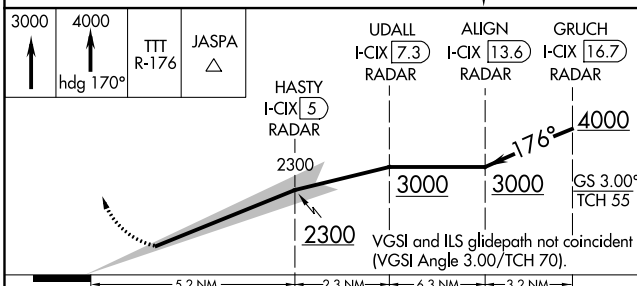
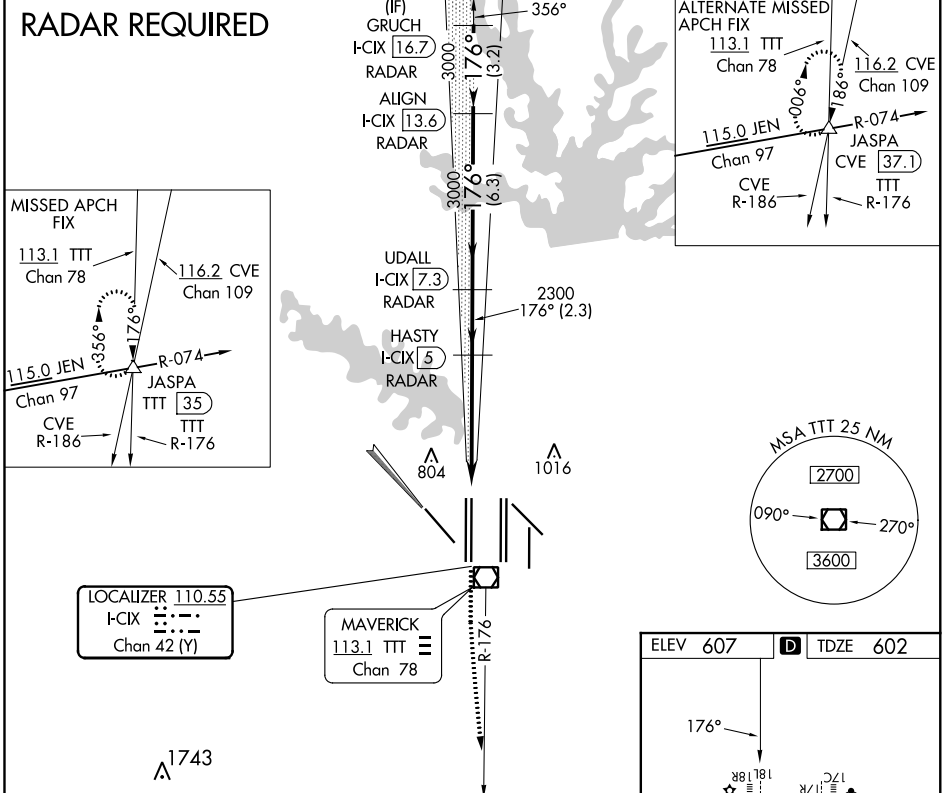


LOC/DME I-CIX <b>110.55</b> Chan 42 (Y)	APP CRS <b>176°</b>	Rwy Idg <b>13400</b> TDZE <b>602</b> Apt Elev <b>607</b>
---	------------------------	--

# CONVERGING ILS RWY 18L

DALLAS-FORT WORTH INTL (DFW)

<b>Simultaneous approach authorized with Converging ILS Rwy 13R.</b> DME or RADAR required.		MALSR 	<b>MISSED APPROACH:</b> Climb to 3000, then climb to 4000 on heading 170° and TTT VOR/DME R-176 to JASPA INT/TTT 35 DME and hold.		
D-ATIS ARR <b>123.775</b> DEP <b>135.925</b>	REGIONAL APP CON <b>118.425</b>	DFW TOWER <b>126.55 127.5</b> EAST <b>124.15 134.9</b> WEST	GND CON <b>121.65 121.8</b> EAST <b>121.85</b> WEST	CLNC DEL <b>128.25</b>	CPDLC



CATEGORY	A	B	C	D	HIRL all Rwys REIL Rwys 13L and 31L TDZ/CL all Rwys except 13L and 31L
S-ILS 18L		802/18	200 (200-½)		

SC-2, 31 JAN 2019 to 28 FEB 2019

SC-2, 31 JAN 2019 to 28 FEB 2019