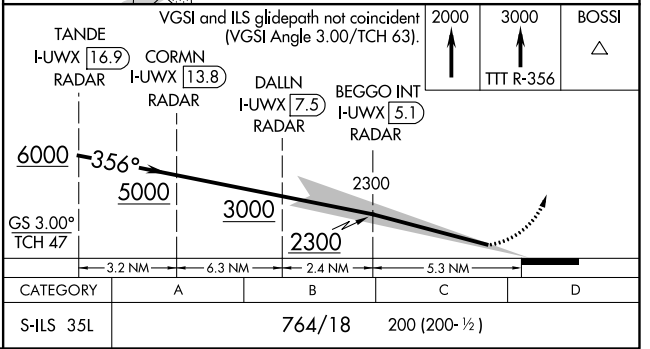
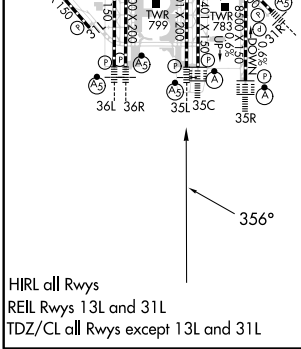
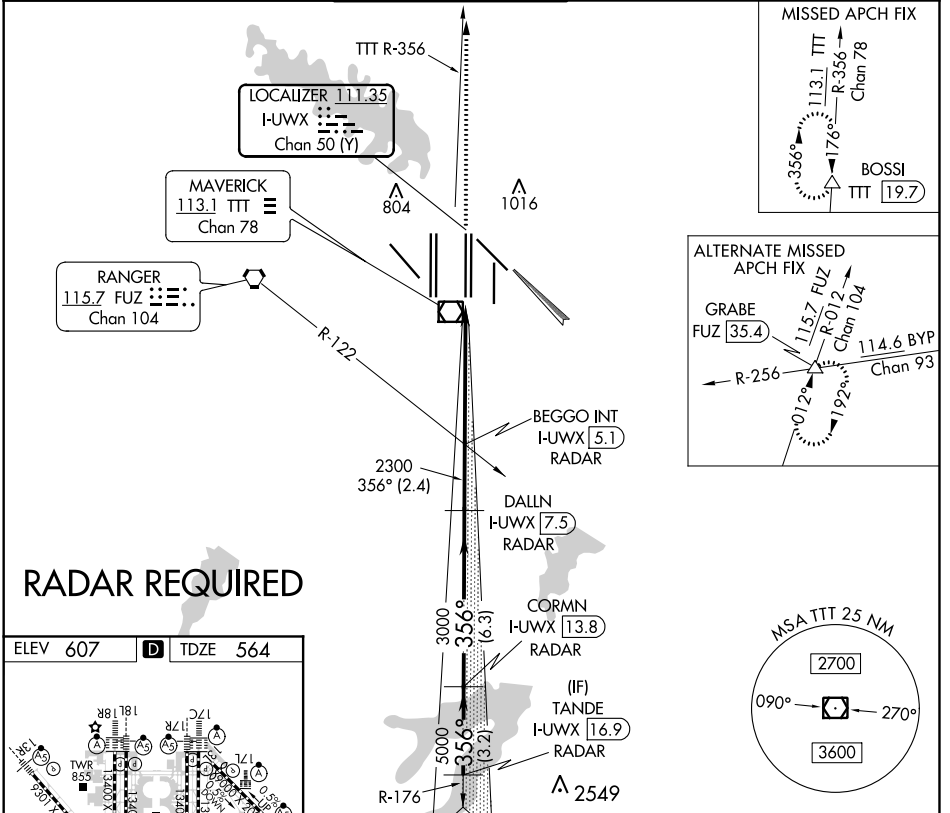


LOC/DME I-UWX 111.35 Chan 50 (Y)	APP CRS 356°	Rwy Idg 13401 TDZE 564 Apt Elev 607
--	------------------------	--

CONVERGING ILS RWY 35L

DALLAS-FORT WORTH INTL (DFW)

<p>▼ DME or RADAR required. Simultaneous approach authorized with Converging ILS Rwy 31R.</p>	<p>MALS/R AS</p>	<p>MISSED APPROACH: Climb to 2000 then climb to 3000 on TTT VOR/DME R-356 to BOSSI/TTT 19.7 DME/RADAR and hold.</p>			
<p>D-ATIS ARR 123.775 DEP 135.925</p>	<p>REGIONAL APP CON 127.075</p>	<p>DFW TOWER 126.55 EAST 127.5 WEST 124.15 EAST 134.9 WEST</p>	<p>GND CON 121.65 EAST 121.8 EAST 121.85 WEST</p>	<p>CLNC DEL 128.25</p>	<p>CPDLC</p>



SC-2, 31 JAN 2019 to 28 FEB 2019

SC-2, 31 JAN 2019 to 28 FEB 2019