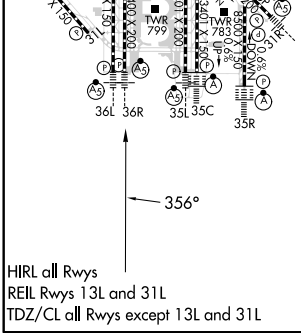
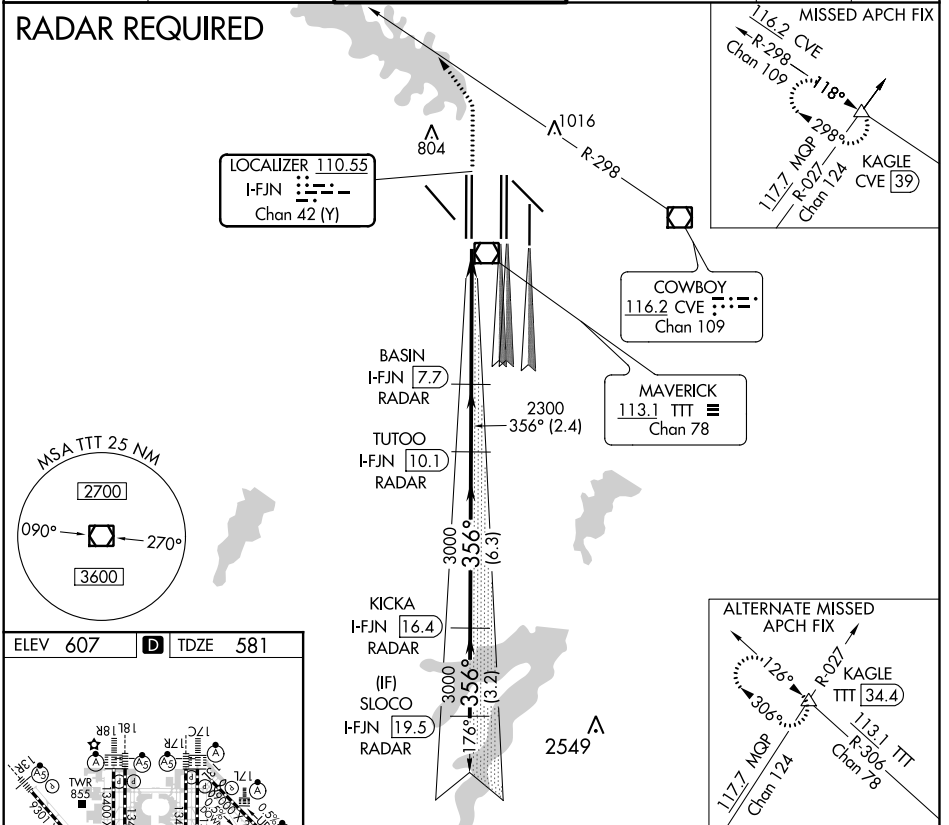


LOC/DME I-FJN 110.55 Chan 42 (Y)	APP CRS 356°	Rwy Idg TDZE Apt Elev	13400 581 607
--	------------------------	-----------------------------	--

CONVERGING ILS RWY 36R

DALLAS-FORT WORTH INTL (DFW)

D-ATIS ARR 123.775 DEP 135.925	REGIONAL APP CON 118.425	DFW TOWER 126.55 127.5 EAST 124.15 134.9 WEST		GND CON 121.65 121.8 EAST 121.85 WEST	CLNC DEL 128.25	CPDLC
		Simultaneous approach authorized with Converging ILS Rwy 31R. DME or Radar required.				



ELEV 607	D	TDZE 581	
1100	3000	CVE R-298	KAGLE
hdg 320°			
BASIN I-FJN 7.7 RADAR	TUTOO I-FJN 10.1 RADAR	KICKA I-FJN 16.4 RADAR	SLOCO I-FJN 19.5 RADAR
2300	3000	3000	4000
5.3 NM	2.4 NM	6.3 NM	3.2 NM
VGSi and ILS glidepath not coincident (VGSi Angle 3.00/TCH 66).			
GS 3.00°	TCH 50		
CATEGORY	A	B	C
S-ILS 36R	781/18		200 (200-½)

SC-2, 31 JAN 2019 to 28 FEB 2019

SC-2, 31 JAN 2019 to 28 FEB 2019