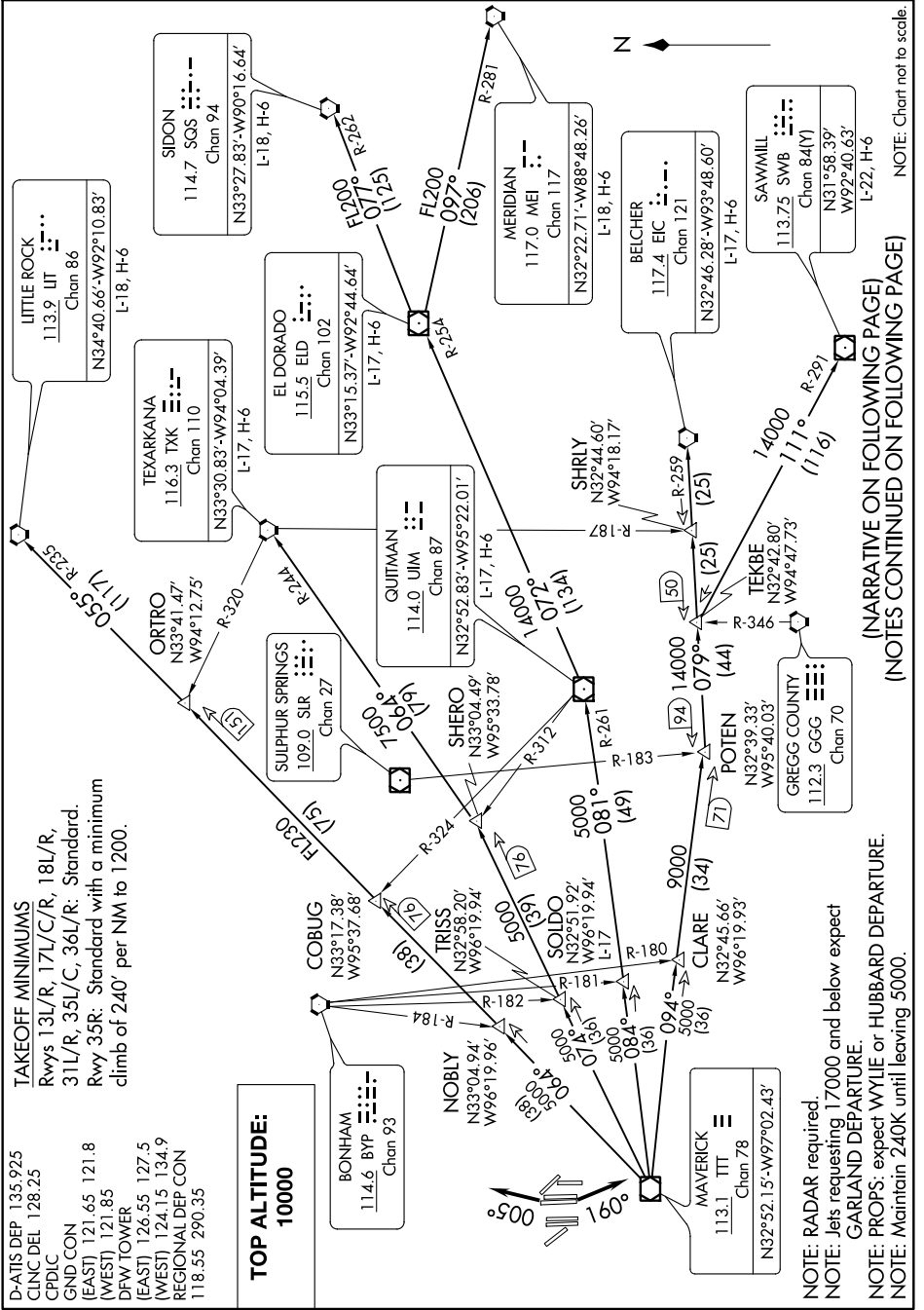


DALLAS FOUR DEPARTURE

DALLAS-FORT WORTH, TEXAS

SC-2, 31 JAN 2019 to 28 FEB 2019



TAKEOFF MINIMUMS
 Rwys 13L/R, 17L/C/R, 18L/R,
 31L/R, 35L/C, 36L/R: Standard.
 Rwy 35R: Standard with a minimum
 climb of 240' per NM to 1200.

D-ATIS DEP 135.925
 CLNC DEL 128.25
 CPDLC
 GND CON
 (EAST) 121.65 121.8
 (WEST) 121.85
 DFW TOWER
 (EAST) 126.55 127.5
 (WEST) 124.15 134.9
 REGIONAL DEP CON
 118.55 290.35

**TOP ALTITUDE:
 10000**

BONHAM
 114.6 BYP
 Chan 93

MAVERICK
 113.1 TTT
 Chan 78
 N32°52.15'-W97°02.43'

NOTE: RADAR required.
 NOTE: Jets requesting 17000 and below expect
 GARLAND DEPARTURE.
 NOTE: PROPS: expect WYLLIE or HUBBARD DEPARTURE.
 NOTE: Maintain 240K until leaving 5000.

(NARRATIVE ON FOLLOWING PAGE)
 (NOTES CONTINUED ON FOLLOWING PAGE)

NOTE: Chart not to scale.

SC-2, 31 JAN 2019 to 28 FEB 2019

DALLAS FOUR DEPARTURE

DALLAS-FORT WORTH, TEXAS