

(CAINE.DAWGZ2) 17229

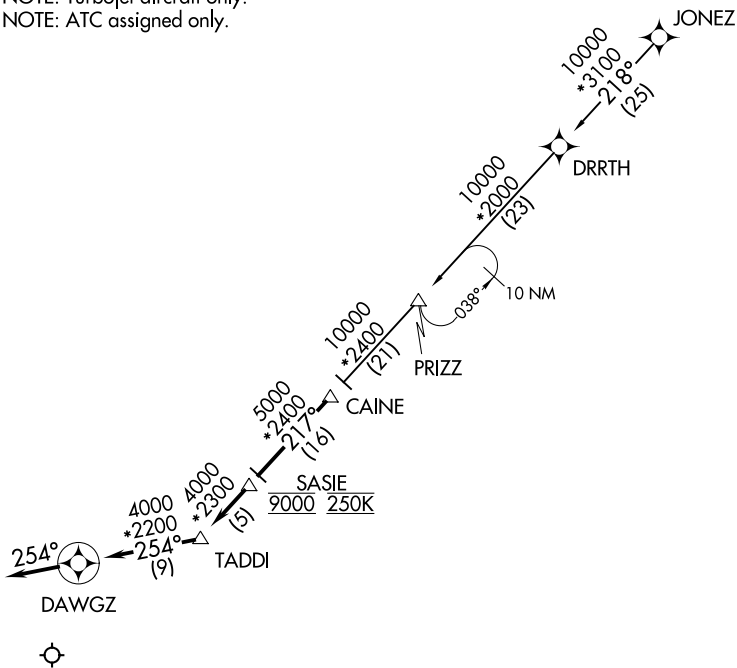
AL-6039 (FAA)

DALLAS-FORT WORTH INTL (DFW)  
DALLAS-FORT WORTH, TEXAS

# DAWGZ TWO ARRIVAL (RNAV)

D-ATIS ARR  
123.775  
REGIONAL APP CON  
125.025 263.025

- NOTE: RADAR required.
- NOTE: RNAV 1.
- NOTE: DME/DME/IRU or GPS required.
- NOTE: Turbojet aircraft only.
- NOTE: ATC assigned only.



NOTE: Chart not to scale.

## ARRIVAL DESCRIPTION

### JONEZ TRANSITION (JONEZ.DAWGZ2)

From CAINE on track 217° to cross SASIE at 9000 and at 250K, then on track 217° to TADDI, then on track 254° to DAWGZ, then on track 254°.  
Expect RADAR vectors to final approach course.

DAWGZ TWO ARRIVAL (RNAV)

(CAINE.DAWGZ2) 25JUN15

DALLAS-FORT WORTH, TEXAS  
DALLAS-FORT WORTH INTL (DFW)

SC-2, 31 JAN 2019 to 28 FEB 2019

SC-2, 31 JAN 2019 to 28 FEB 2019