

FORCK TWO DEPARTURE (RNAV)

SC-2, 31 JAN 2019 to 28 FEB 2019

TOP ALTITUDE:  
RWY 17C/R, 18L/R,  
35C/L, 36L/R: 10000  
RWY 31L/R: 5000

TAKEOFF MINIMUMS

Rwys 31L/R: Standard.

Rwys 17C/R, 18L/R, 35L/C, 36L/R:

Standard with minimum climb of 500' per

NM to 1120.

D-ATIS DEP 135.975  
CINC DEL 128.25  
CPOLC  
GND CON  
121.65 121.8 (EAST)  
121.85 (WEST)  
DRW TOWER  
126.55 127.5 (EAST)  
124.15 134.9 (WEST)  
REGIONAL DEP CON  
118.55 290.35

ZACHH

TRYTN

SWDIA

JAYXX

ZERLU

TRRCH

JJANE

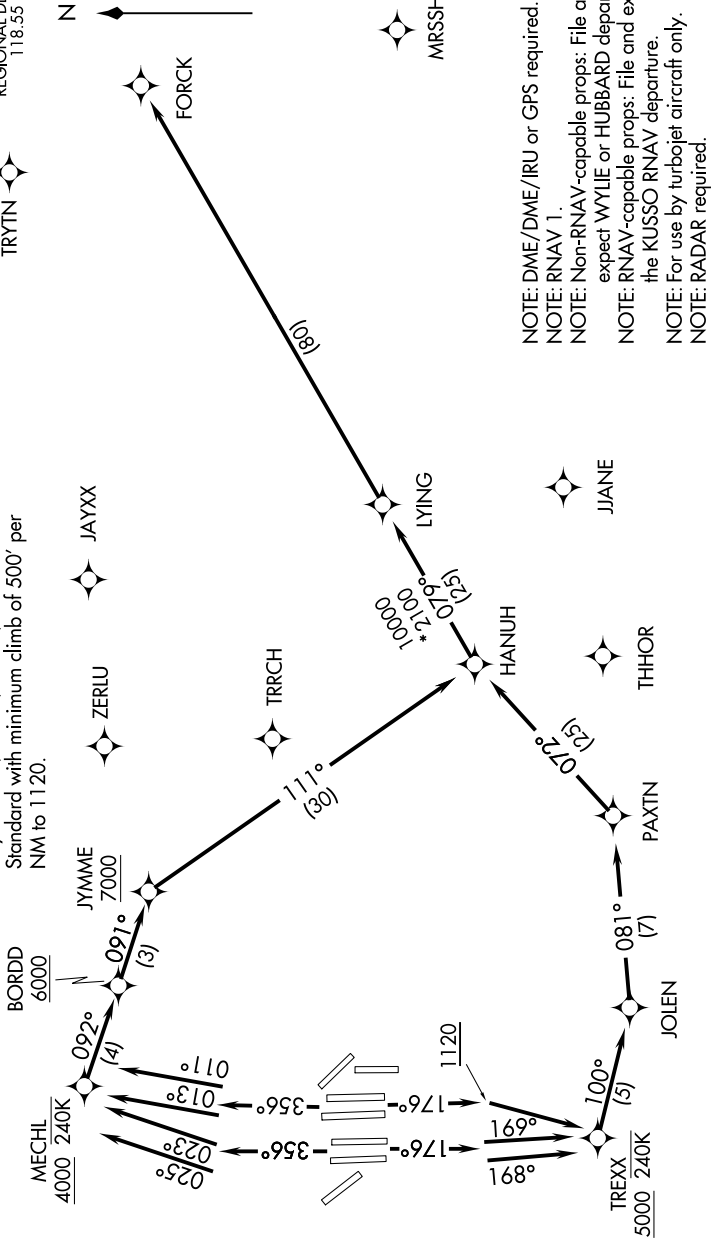
THHOR

PAXTN

JOLEN



- NOTE: DME/DME/IRU or GPS required.
- NOTE: RNAV 1.
- NOTE: Non-RNAV-capable props: File and expect WYLLIE or HUBBARD departure.
- NOTE: RNAV-capable props: File and expect the KUSSO RNAV departure.
- NOTE: For use by turbojet aircraft only.
- NOTE: RADAR required.



(NARRATIVE ON FOLLOWING PAGE)

SC-2, 31 JAN 2019 to 28 FEB 2019

FORCK TWO DEPARTURE (RNAV)