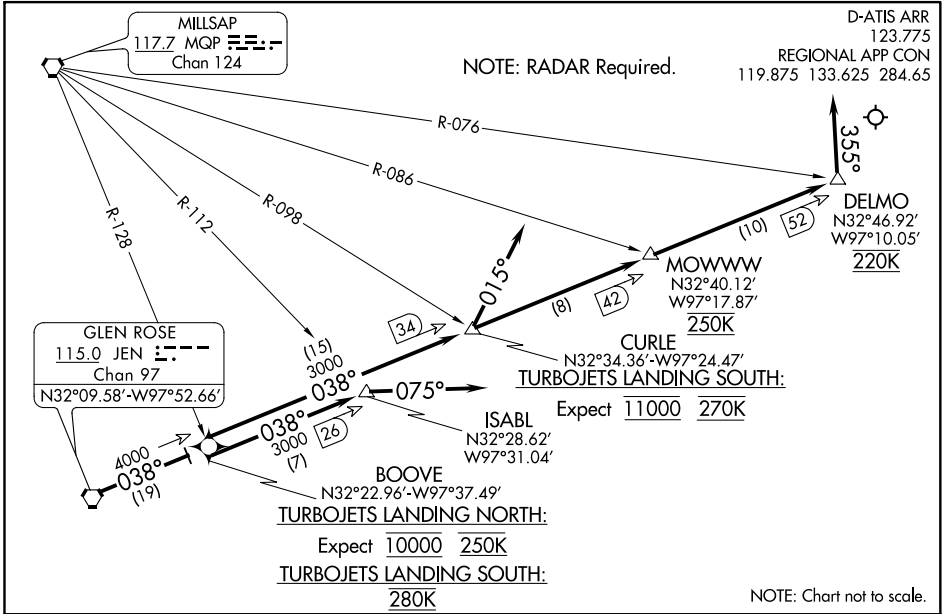


GLEN ROSE ONE ARRIVAL Arrival Routes



ARRIVAL ROUTE DESCRIPTION

ABILENE TRANSITION (ABI.JEN1): From over ABI VORTAC on ABI R-099 to GEENI INT, then on JEN R-267 to JEN VORTAC. Thence . . .

CENTEX TRANSITION (CWK.JEN1): From over CWK VORTAC on CWK R-321 and AGJ R-142 to AGJ VORTAC, then on AGJ R-350 to JUMBO INT, then on JEN R-197 to JEN VORTAC. Thence . . .

SAN ANTONIO TRANSITION (SAT.JEN1): From over SAT VORTAC on SAT R-359 to JUMBO INT, then on JEN R-197 to JEN VORTAC. Thence . . .

WACO TRANSITION (ACT.JEN1): From over ACT VORTAC on ACT R-305 to IGORR INT, then on ACT R-305 and JEN R-128 to GAINS INT, then on JEN R-128 to JEN VORTAC. Thence . . .

WINK TRANSITION (INK.JEN1): From over INK VORTAC on INK R-071 and TQA R-254 to PHILS INT, then on TQA R-254 to TQA VOR/DME, then on TQA R-082 to GEENI INT, then on TQA R-082 and JEN R-267 to CADES INT, then on JEN R-267 to JEN VORTAC. Thence . . .

. . . **ALL AIRCRAFT:** From JEN VORTAC on JEN R-038. Thence:

AIRCRAFT LANDING NORTH: To BOOVE INT, to ISABL INT, depart heading 075°, expect Radar vectors.

TURBOJETS LANDING SOUTH: To BOOVE INT, to CURLE INT, then to cross MOWWW INT at 250K, then to cross DELMO INT at 220K, depart heading 355°, expect Radar vectors.

PROPS LANDING SOUTH: To BOOVE INT, to CURLE INT, depart heading 015°, expect Radar vectors.

GLEN ROSE ONE ARRIVAL Arrival Routes

SC-2, 31 JAN 2019 to 28 FEB 2019

SC-2, 31 JAN 2019 to 28 FEB 2019