

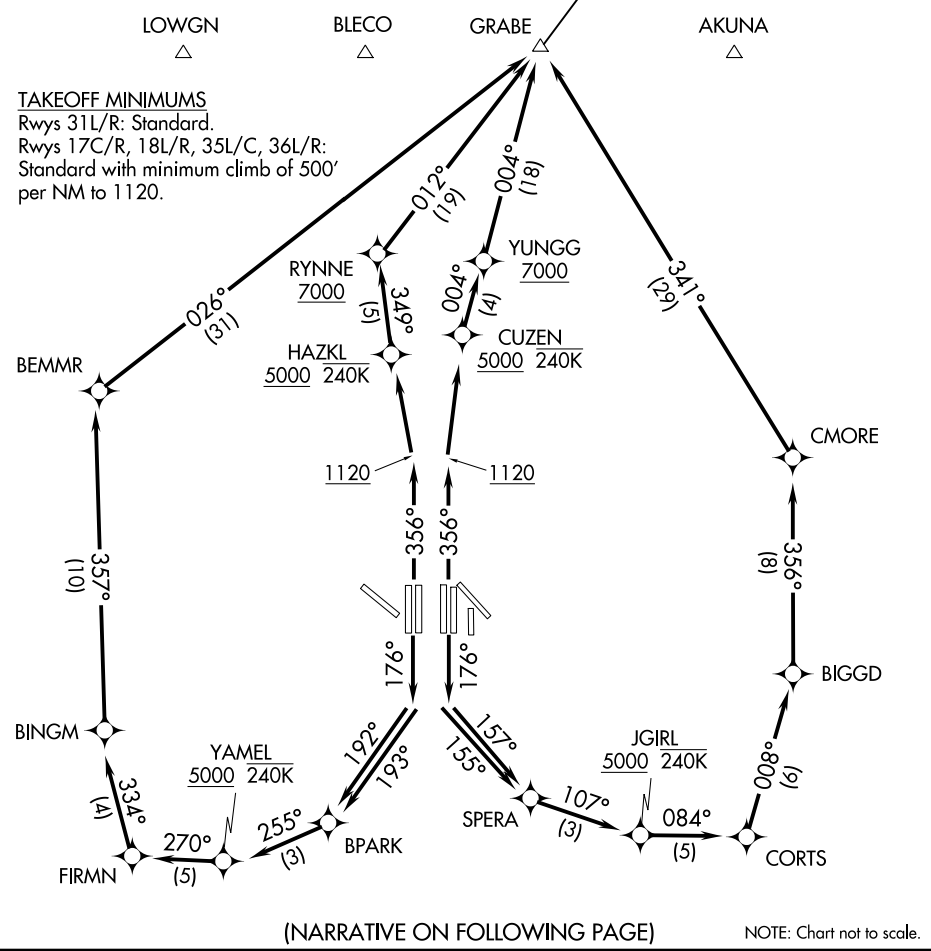
GRABE EIGHT DEPARTURE (RNAV)

D-ATIS DEP 135.925
 CLNC DEL 128.25
 CPDLC
 GND CON
 121.65 121.8 (EAST)
 121.85 (WEST)
 DFW TOWER
 126.55 127.5 (EAST)
 124.15 134.9 (WEST)
 REGIONAL DEP CON
 118.55 290.35 (Rwy 17R/C)
 126.47 363.15 (Rwy 18L/R)
 125.12 353.95 (Rwys 35L/C and 36L/R)

NOTE: EAKER TRANSITION: For aircraft inbound to the Tulsa terminal area.
 NOTE: OKMULGEE TRANSITION: For all aircraft overflying the OKM VOR/DME proceeding via J181 to BDF VORTAC then to destinations in the Chicago terminal area and north.
 NOTE: DME/DME/IRU or GPS required.
 NOTE: RNAV 1.
 NOTE: For use by turbojet aircraft only.
 NOTE: Props file and expect JACKY or TRI-GATE DEPARTURE.
 NOTE: RADAR required.

OKMULGEE
OKM

TOP ALTITUDE:
RWYS 31L/31R: 5000
**RWYS 17C/17R/18L/18R/
 35L/35C/36L/36R: 10000**



SC-2, 31 JAN 2019 to 28 FEB 2019

SC-2, 31 JAN 2019 to 28 FEB 2019

(NARRATIVE ON FOLLOWING PAGE)

NOTE: Chart not to scale.

GRABE EIGHT DEPARTURE (RNAV)