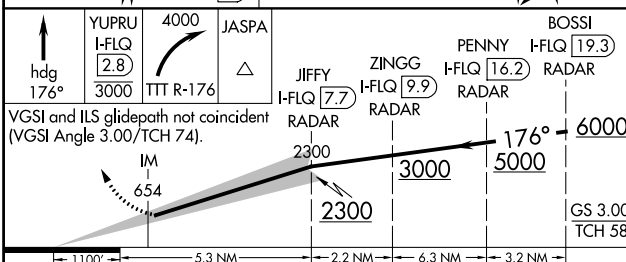
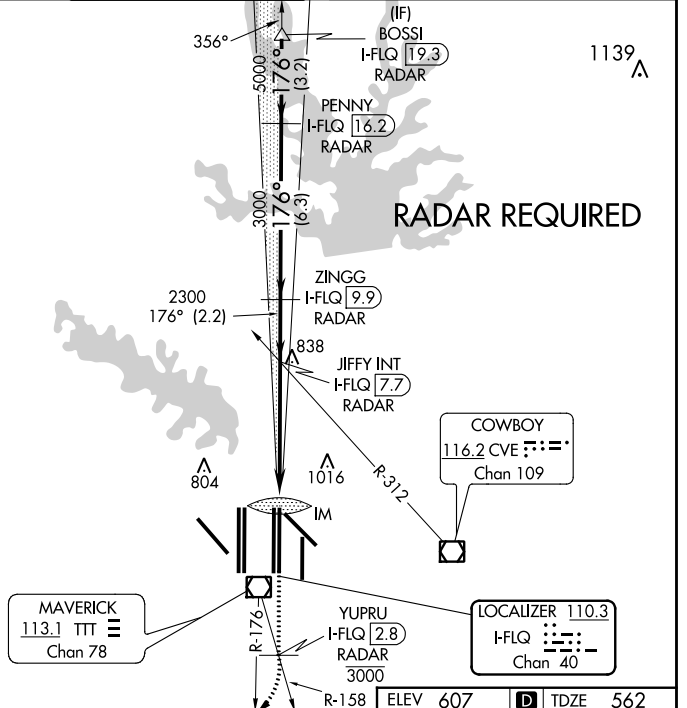
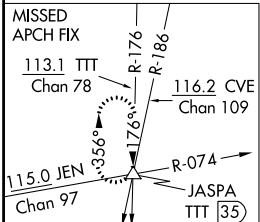
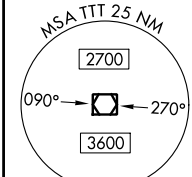
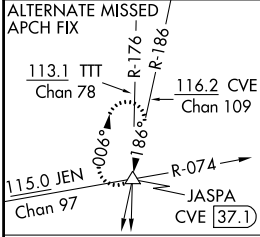


LOC/DME I-FLQ <b>110.3</b> Chan <b>40</b>	APP CRS <b>176°</b>	Rwy ldg TDZE Apt Elev	<b>13401</b> <b>562</b> <b>607</b>
---	------------------------	-----------------------------	--

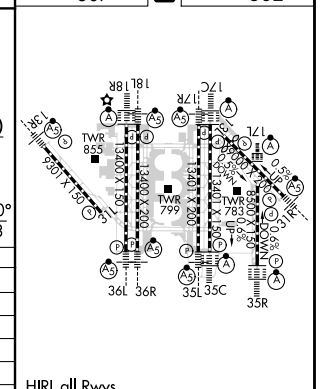
# ILS RWY 17C (CAT II & III)

DALLAS-FORT WORTH INTL (DFW)

D-ATIS ARR <b>123.775</b> DEP <b>135.925</b>	REGIONAL APP CON <b>127.075</b>	DFW TOWER		GND CON		CLNC DEL <b>128.25</b>	CPDLC
		<b>126.55</b>	<b>127.5</b>	EAST <b>124.15</b>	WEST <b>134.9</b>		



CATEGORY	A	B	C	D
S-ILS 17C	CAT II RA 102/12 100 DA 662			
S-ILS 17C	CAT IIIa RVR 07			
S-ILS 17C	CAT IIIb RVR 06			
S-ILS 17C	CAT IIIc NA			



## CATEGORY II & III ILS - SPECIAL AIRCREW & AIRCRAFT CERTIFICATION REQUIRED

HIRL all Rwws  
REIL Rwws 13L and 31L  
TDZ/CL all Rwws except 13L and 31L

SC-2, 31 JAN 2019 to 28 FEB 2019

SC-2, 31 JAN 2019 to 28 FEB 2019