

LOC/DME I-JHZ 111.35 Chan 50 (Y)	APP CRS 176°	Rwy Idg 13401 TDZE 567 Apt Elev 607
---	------------------------	---

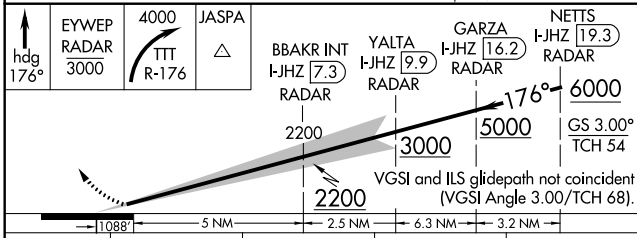
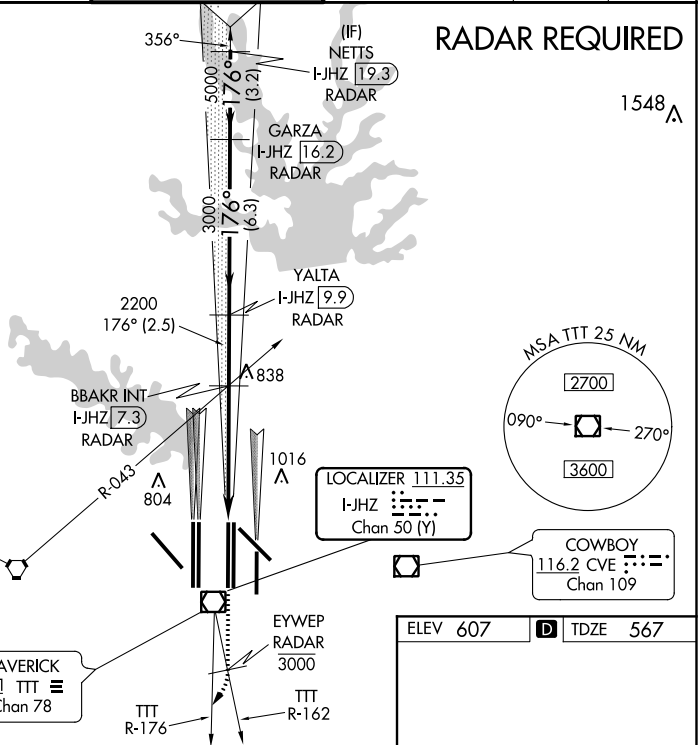
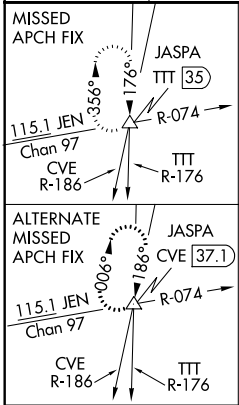
ILS RWY 17R (SA CAT I & CAT II)

DALLAS-FORT WORTH INTL (DFW)

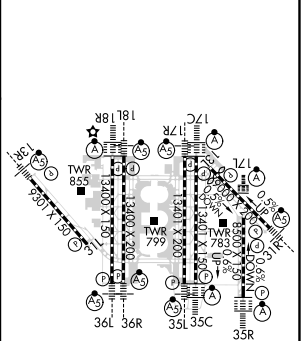
▼ DME or RADAR required. Simultaneous approach authorized with Rwy 17L and Rwys 18L/R. SA Cat I: Requires specific OPSPEC, MSPEC, or LOA approval and use of HUD to DH. SA Cat II: Reduced visibility requires specific OPSPEC, MSPEC, or LOA approval and use of Autoland to touchdown

MALSR
MISSED APPROACH: Climb on heading 176° to cross to EYWEP/RADAR at or below 3000, then climbing right turn to 4000 on TTT VOR/DME R-176 to JASPA INT/TTT 35 DME and hold.

D-ATIS ARR 123.775 DEP 135.925	REGIONAL APP CON 127.075	DFW TOWER 126.55 127.5 EAST 124.15 134.9 WEST	GND CON 121.65 121.8 EAST 121.85 WEST	CLNC DEL 128.25	CPDLC
--	------------------------------------	---	---	---------------------------	-------



ELEV 607	D TDZE 567
----------	-------------------



CATEGORY	A	B	C	D
S-ILS 17R	SA CAT I	RA 160/14	150 DA 717	
S-ILS 17R	SA CAT II	RA 98/12	100 DA 667	

SA CATEGORY I & II ILS SPECIAL AIRCREW & AIRCRAFT CERTIFICATION REQUIRED

HIRL all Rwys
REIL Rwy 13L and 31L
TDZ/CL all Rwys except 13L and 31L

SC-2, 31 JAN 2019 to 28 FEB 2019

SC-2, 31 JAN 2019 to 28 FEB 2019