

LOC/DME I-VYV <b>111.9</b> Chan <b>56</b>	APP CRS <b>176°</b>	Rwy Idg TDZE Apt Elev	<b>13400</b> <b>607</b> <b>607</b>
---	------------------------	-----------------------------	--

# ILS RWY 18R (CAT II & III)

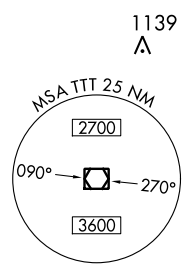
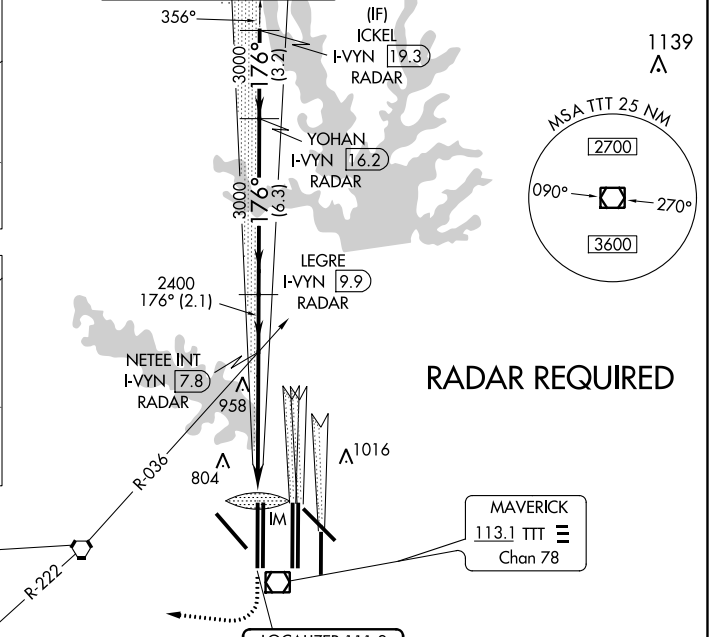
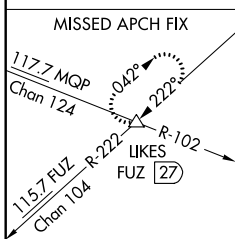
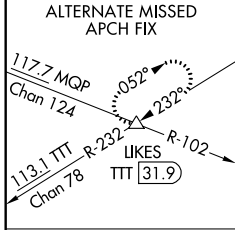
DALLAS-FORT WORTH INTL (DFW)

**▲** DME or RADAR required. Simultaneous approach authorized with Rwy 17 L/C/R.

ALSF-2

MISSED APPROACH: Climb to 1100 then climbing right turn to 3000 on heading 250° and FUZ VORTAC R-222 to LIKES INT/FUZ VORTAC 27 DME and hold.

D-ATIS ARR <b>123.775</b> DEP <b>135.925</b>	REGIONAL APP CON <b>118.425</b>	DFW TOWER <b>126.55 127.5</b> EAST <b>124.15 134.9</b> WEST	GND CON <b>121.65 121.8</b> EAST <b>121.85</b> WEST	CLNC DEL <b>128.25</b>	CPDLC
--	------------------------------------	---	---	---------------------------	-------



**RADAR REQUIRED**

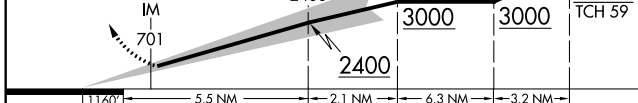
RANGER  
115.7 FUZ  
Chan 104

LOCALIZER 111.9  
I-VYV  
Chan 56

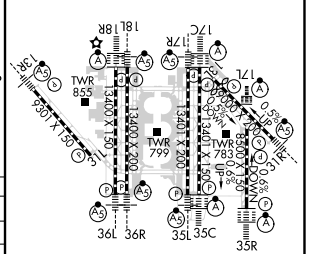
ELEV 607	<b>D</b>	TDZE 607
----------	----------	----------

1100	3000	FUZ R-222	LIKES	ICKEL I-VYV 19.3
↑	hdg 250°	△		

VGSI and ILS glidepath not coincident (VGSI Angle 3.00/TCH 74).



CATEGORY	A	B	C	D
S-ILS 18R	CAT II RA 106/12 100 DA 707			
S-ILS 18R	CAT IIIa RVR 07			
S-ILS 18R	CAT IIIb RVR 06			
S-ILS 18R	CAT IIIc NA			



## CATEGORY II & III ILS - SPECIAL AIRCREW & AIRCRAFT CERTIFICATION REQUIRED

HIRL all Rwys  
REIL Rwys 13L and 31L  
TDZ/CL all Rwys except 13L and 31L

SC-2, 31 JAN 2019 to 28 FEB 2019

SC-2, 31 JAN 2019 to 28 FEB 2019