

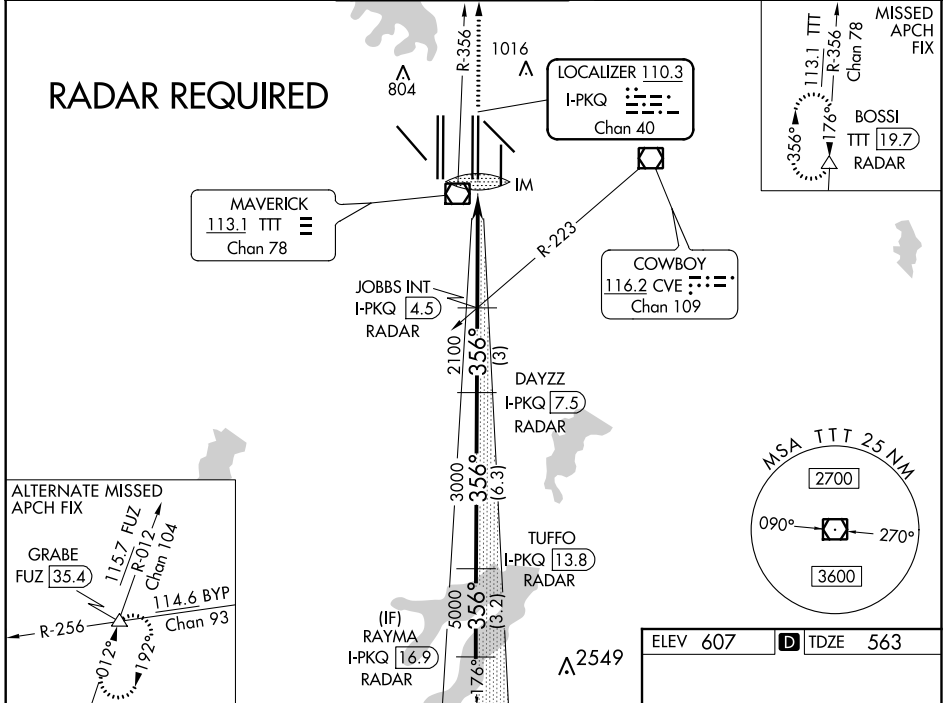
LOC/DME I-PKQ 110.3 Chan 40	APP CRS 356°	Rwy Idg TDZE Apt Elev	13401 563 607
------------------------------------------	------------------------	--------------------------	------------------------------------------

ILS RWY 35C (CAT II & III)

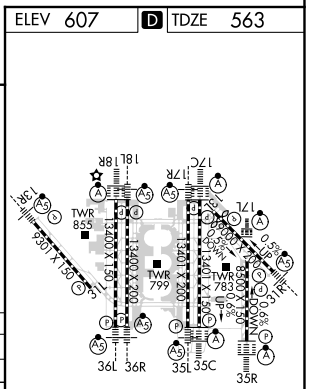
DALLAS-FORT WORTH INTL (DFW)

DME or RADAR required. Simultaneous approach authorized with Rwy 35R, Rwy 36L/R.		ALSF-2	MISSED APPROACH: Climb to 3000 on TTT VOR/DME R-356 to BOSSI/TTT 19.7 DME/RADAR and hold.		
-------------------------------------------------------------------------------------	--	--------	-------------------------------------------------------------------------------------------	--	--

D-ATIS ARR 123.775 DEP 135.925	REGIONAL APP CON 127.075	DFW TOWER 126.55 127.5 EAST 124.15 134.9 WEST	GND CON 121.65 121.8 EAST 121.85 WEST	CLNC DEL 128.25	CPDLC
----------------------------------------------------	------------------------------------	-------------------------------------------------------------------	-----------------------------------------------------------	---------------------------	-------



3000 TTT R-356	BOSSI	VGSI and ILS glidepath not coincident (VGSI Angle 3.00/TCH 76).		TUFFO I-PKQ 13.8 RADAR	RAYMA I-PKQ 16.9 RADAR
IM 663	JOBBS INT I-PKQ 4.5 RADAR	DAYZZ I-PKQ 7.5 RADAR	3000	5000	6000
4.6 NM	3 NM	6.3 NM	3.2 NM	GS 3.00° TCH 59	
CATEGORY	A	B	C	D	
S-ILS 35C	CAT II RA 100/12 100 DA 663				
S-ILS 35C	CAT IIIa RVR 07				
S-ILS 35C	CAT IIIb RVR 06				
S-ILS 35C	CAT IIIc NA				



CATEGORY II & III ILS - SPECIAL AIRCREW & AIRCRAFT CERTIFICATION REQUIRED

HIRL all Rwys
REIL Rwys 13L and 31L
TDZ/CL all Rwys except 13L and 31L

SC-2, 31 JAN 2019 to 28 FEB 2019

SC-2, 31 JAN 2019 to 28 FEB 2019