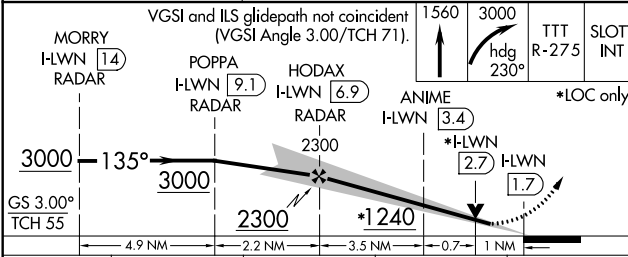
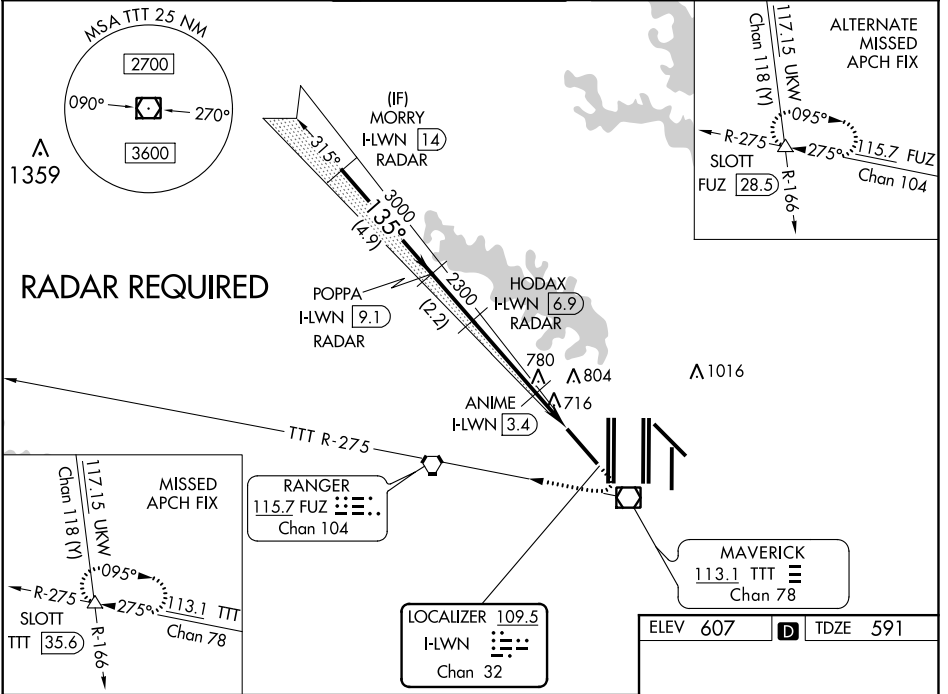


LOC/DME I-LWN <b>109.5</b> Chan <b>32</b>	APP CRS <b>135°</b>	Rwy Idg TDZE Apt Elev <b>9301</b> <b>591</b> <b>607</b>
---	------------------------	--

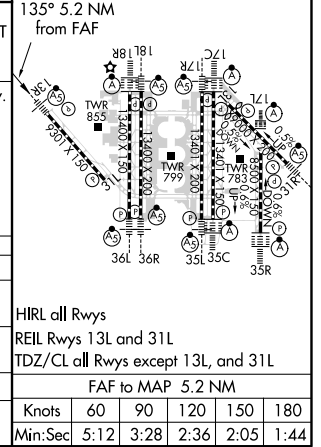
# ILS or LOC RWY 13R

DALLAS-FORT WORTH INTL (DFW)

<p><b>▼</b> DME or RADAR required.</p>		<p>MALSR</p>	<p>MISSED APPROACH: Climb to 1560 then climbing right turn to 3000 on heading 230° and TTT VOR/DME R-275 to SLOTT/TTT 35.6 DME and hold.</p>		
<p>D-ATIS ARR <b>123.775</b> DEP <b>135.925</b></p>	<p>REGIONAL APP CON <b>118.1 133.15</b></p>	<p>DFW TOWER <b>126.55 127.5</b> EAST <b>124.15 134.9</b> WEST</p>	<p>GND CON <b>121.65 121.8</b> EAST <b>121.85</b> WEST</p>	<p>CLNC DEL <b>128.25</b></p>	<p>CPDLC</p>



CATEGORY	A	B	C	D
S-ILS 13R	791/18		200 (200-½)	
S-LOC 13R	1240/24	649 (700-½)	1240-1⅓	649 (700-1⅓)
ANIME FIX MINIMUMS				
S-LOC 13R	980/24	389 (400-½)	980/35	389 (400-5/8)



SC-2, 31 JAN 2019 to 28 FEB 2019

SC-2, 31 JAN 2019 to 28 FEB 2019