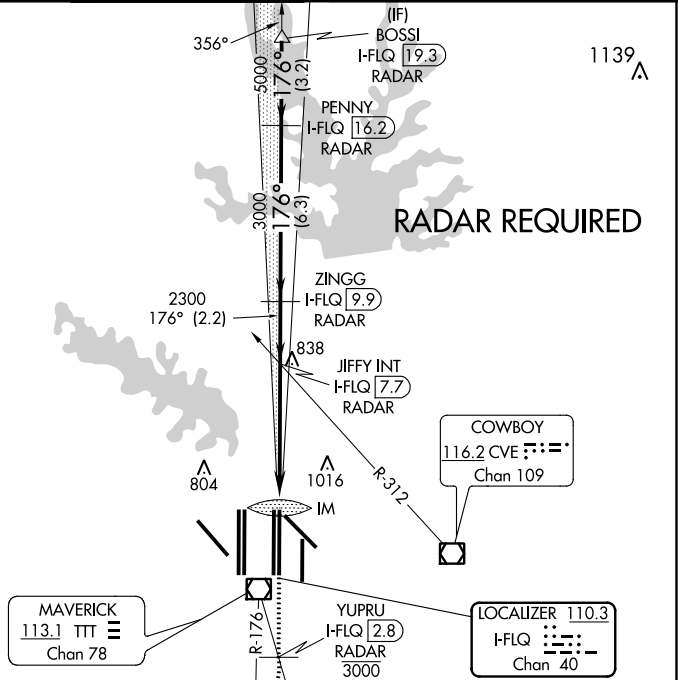
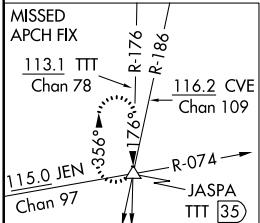
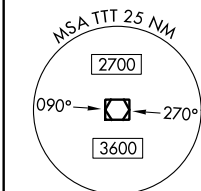
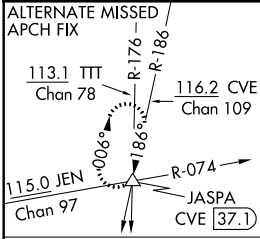


LOC/DME I-FLQ 110.3 Chan 40	APP CRS 176°	Rwy 17C Idg 13401 TDZE 562 Apt Elev 607	Rwy 17R Idg 13401 TDZE 567 Apt Elev 607
---	------------------------	--	--

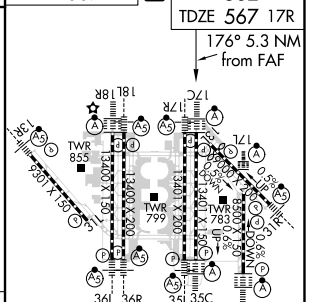
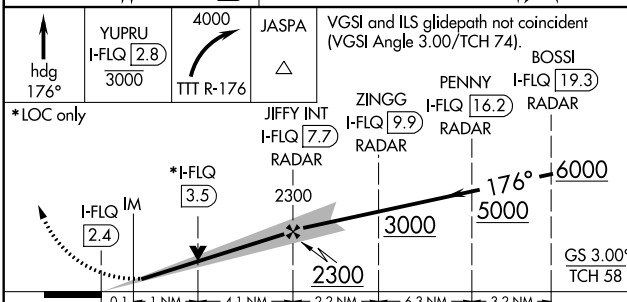
ILS or LOC RWY 17C

DALLAS-FORT WORTH INTL (DFW)

<p>▼ DME or RADAR required. Simultaneous approach authorized with Rwy 17L, 18L/R. Inop table does not apply to sidestep 17R Cats A and B.</p>	<p>Rwy 17C ALSF-2</p>	<p>Rwy 17R MALS R</p>	<p>MISSED APPROACH: Climb on heading 176° to cross YUPRU/2.8 DME/RADAR at or below 3000, then climbing right turn to 4000 on TTT VOR/DME R-176 to JASPA INT/TTT 35 DME and hold.</p>		
<p>D-ATIS ARR 123.775 DEP 135.925</p>	<p>REGIONAL APP CON 119.4</p>	<p>DFW TOWER 126.55 127.5 EAST 124.15 134.9 WEST</p>	<p>GND CON 121.65 121.8 EAST 121.85 WEST</p>	<p>CLNC DEL 128.25</p>	<p>CPDLC</p>



ELEV 607	TDZE 562 17C
	TDZE 567 17R



CATEGORY	A	B	C	D
S-ILS 17C	762/18 200 (200-½)			
S-LOC 17C	1000/24	438 (400-½)	1000/40	438 (400-¾)
SIDESTEP 17R	1140/55 573 (600-1)		1140-1½ 573 (600-1½)	

HIRL all Rwy's					
REIL Rwy's 13L and 31L					
TDZ/CL all Rwy's except 13L and 31L					
FAF to MAP 5.3 NM					
Knots	60	90	120	150	180
Min:Sec	5:18	3:32	2:39	2:07	1:46

SC-2, 31 JAN 2019 to 28 FEB 2019

SC-2, 31 JAN 2019 to 28 FEB 2019