

LOC/DME I-JHZ 111.35 Chan 50 (Y)	APP CRS 176°	Rwy 17R Idg 13401 TDZE 567 Apt Elev 607	Rwy 17C Idg 13401 TDZE 562 Apt Elev 607
---	------------------------	--	--

ILS or LOC RWY 17R

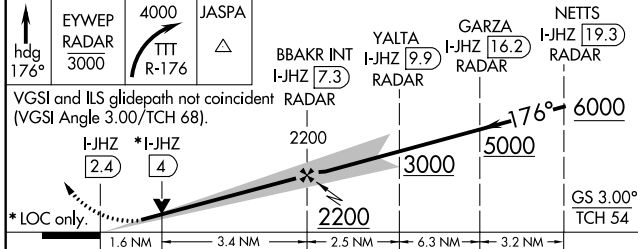
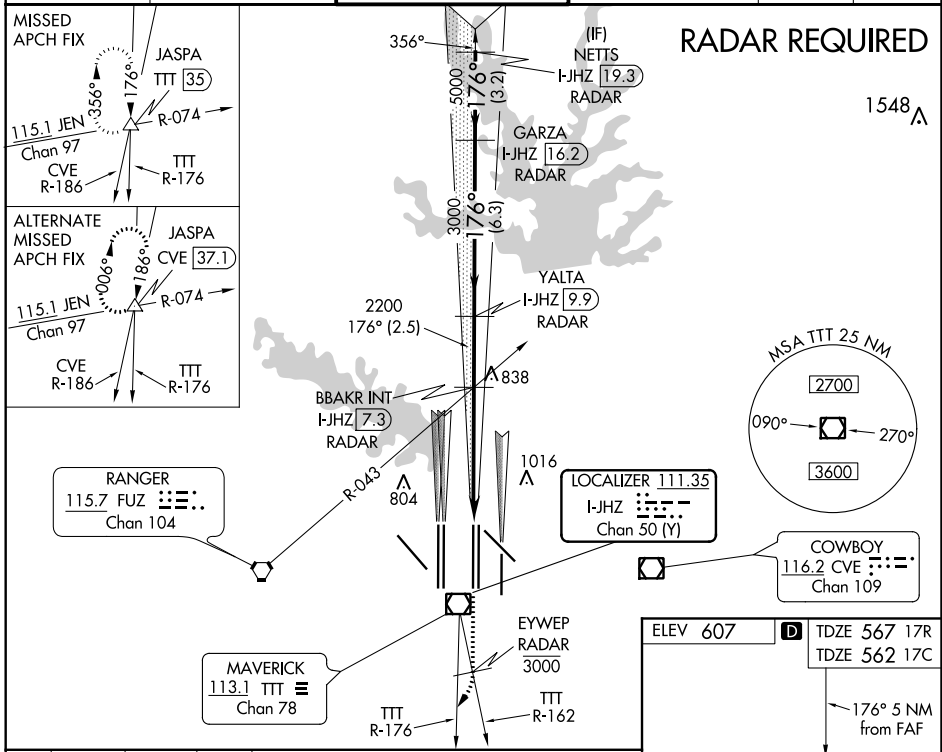
DALLAS-FORT WORTH INTL (DFW)

▽ DME or RADAR required. Simultaneous approach authorized with Rwy 17L and Rws 18L/R.

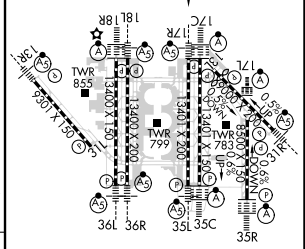
Rwy 17R MALS R (AS) Rwy 17C ALSF-2 (A)

MISSED APPROACH: Climb on heading 176° to cross to EYWEP/RADAR at or below 3000, then climbing right turn to 4000 on TTT VOR/DME R-176 to JASPA INT/TTT 35 DME and hold.

D-ATIS ARR 123.775 DEP 135.925	REGIONAL APP CON 127.075	DFW TOWER 126.55 127.5 EAST 124.15 134.9 WEST	GND CON 121.65 121.8 EAST 121.85 WEST	CLNC DEL 128.25	CPDLC
--	------------------------------------	---	---	---------------------------	-------



ELEV 607	D TDZE 567 17R TDZE 562 17C
	176° 5 NM from FAF



CATEGORY	A	B	C	D
S-ILS 17R		767/18	200 (200-½)	
S-LOC 17R	1140/24	573 (600-½)	1140-1¼	573 (600-1¼)
SIDESTEP 17C	1140-1	578 (600-1)	1140-1½	1140-2
		578 (600-1½)	578 (600-2)	

HIRL all Rws				
REIL Rws 13L and 31L				
TDZ/CL all Rws except 13L and 31L				
	FAF to MAP 5 NM			
Knots	60	90	120	150
Min:Sec	5:00	3:20	2:30	2:00
			1:40	

SC-2, 31 JAN 2019 to 28 FEB 2019

SC-2, 31 JAN 2019 to 28 FEB 2019