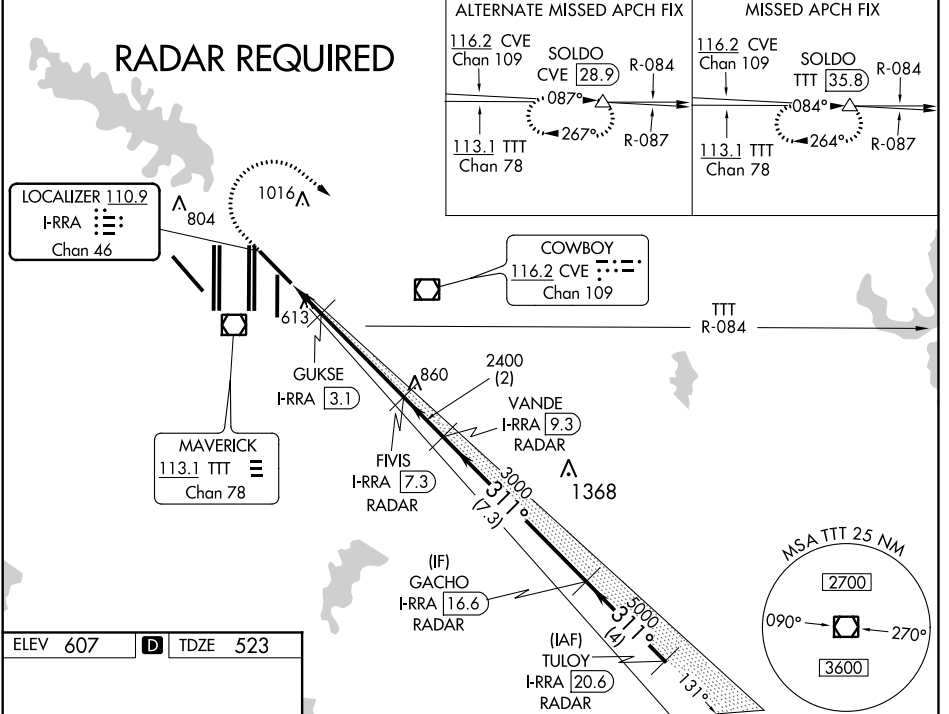


LOC/DME I-RRA 110.9 Chan 46	APP CRS 311°	Rwy Idg TDZE Apt Elev	8375 523 607
---	------------------------	-----------------------------	---

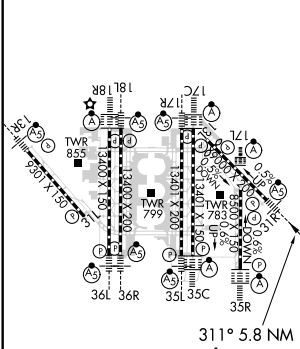
ILS or LOC RWY 31R

DALLAS-FORT WORTH INTL (DFW)

Simultaneous approach authorized. DME required. For inop ALS increase S-LOC 31R GUKSE FIX minimums Cat C/D visibility to RVR 5500.		MALSR 	MISSED APPROACH: Climb to 1100 then climbing right turn to 3000 on heading 125° and TTT VOR/ DME R-084 to SOLD0/TTT 35.8 DME and hold.		
D-ATIS ARR 123.775 DEP 135.925	REGIONAL APP CON 125.2 135.3	DFW TOWER 126.55 127.5 EAST 124.15 134.9 WEST	GND CON 121.65 121.8 EAST 121.85 WEST	CLNC DEL 128.25	CPDLC



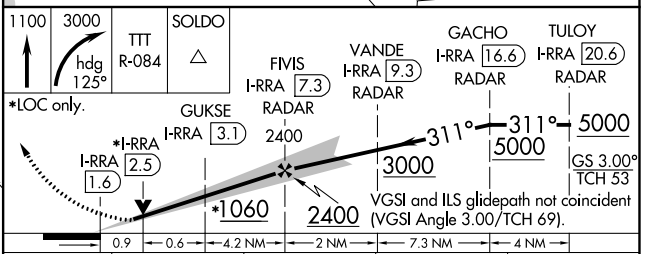
ELEV 607	D	TDZE 523
-----------------	----------	-----------------



HIRL all Rwys
REIL Rwys 13L and 31L
TDZ/CL all Rwys except 13L and 31L

FAF to MAP 5.8 NM

Knots	60	90	120	150	180
Min:Sec	5:48	3:52	2:54	2:19	1:56



CATEGORY	A	B	C	D
S-ILS 31R	723/18		200 (200-½)	
S-LOC 31R	1060/24	537 (500-½)	1060/55	537 (500-1¼)
GUKSE FIX MINIMUMS				
S-LOC 31R	880/24	357 (300-½)	880/30	357 (300-⅝)

SC-2, 31 JAN 2019 to 28 FEB 2019

SC-2, 31 JAN 2019 to 28 FEB 2019