

LOC/DME I-PKQ <b>110.3</b> Chan 40	APP CRS <b>356°</b>	Rwy 35C Idg <b>13401</b> TDZE <b>563</b> Apt Elev <b>607</b>	Rwy 35L Idg <b>13401</b> TDZE <b>564</b> Apt Elev <b>607</b>
--	------------------------	--	--

# ILS or LOC RWY 35C

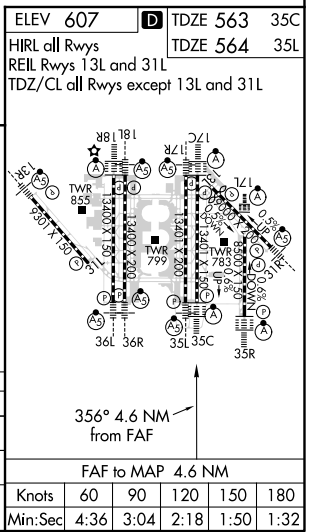
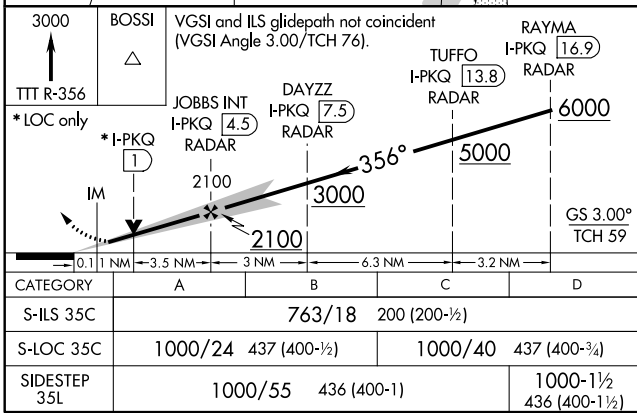
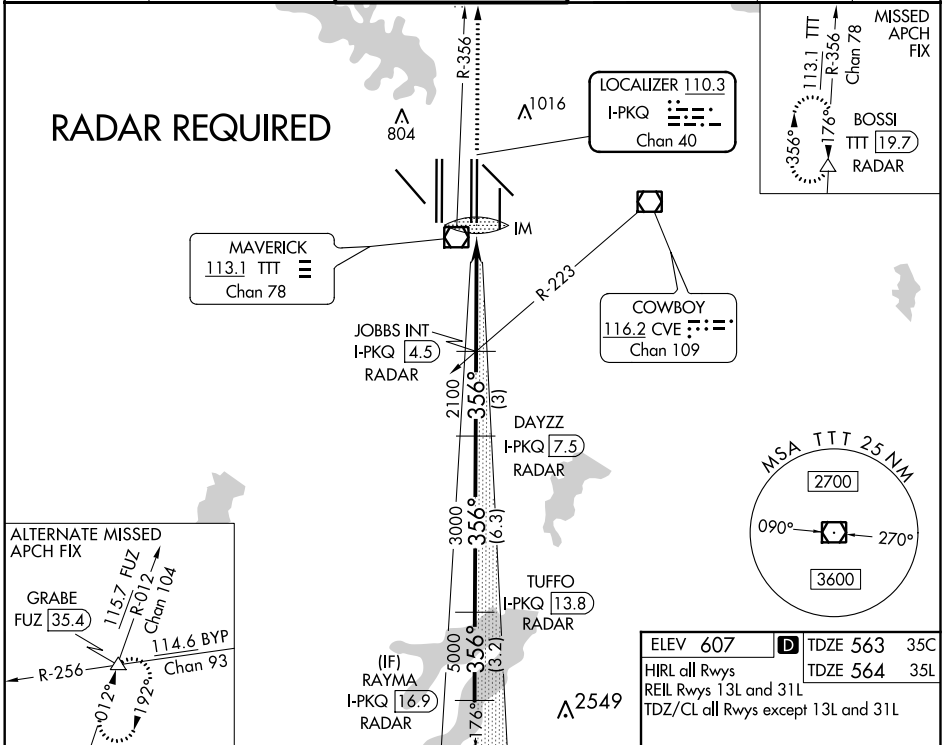
DALLAS-FORT WORTH INTL (DFW)

**▽** Inoperative table does not apply to Sidestep Rwy 35L Cats A and B. DME or RADAR required. Simultaneous approach authorized with Rwy 35R, Rwy 36L/R.

Rwy 35C ALSF-2 Rwy 35L MALSR

MISSED APPROACH: Climb to 3000 on TTT VOR/DME R-356 to BOSSI/TTT 19.7 DME/RADAR and hold.

D-ATIS ARR <b>123.775</b> DEP <b>135.925</b>	REGIONAL APP CON <b>127.075</b>	DFW TOWER <b>126.55 127.5</b> EAST <b>124.15 134.9</b> WEST	GND CON <b>121.65 121.8</b> EAST <b>121.85</b> WEST	CLNC DEL <b>128.25</b>	CPDLC
--	------------------------------------	---	---	---------------------------	-------



SC-2, 31 JAN 2019 to 28 FEB 2019

SC-2, 31 JAN 2019 to 28 FEB 2019