

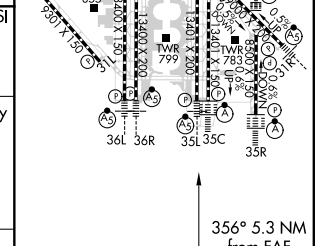
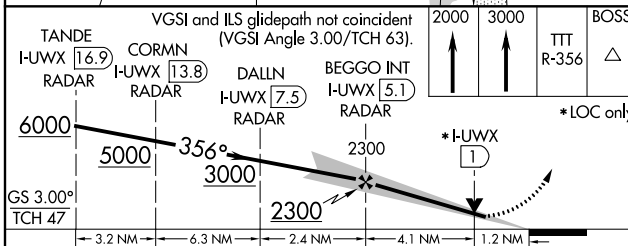
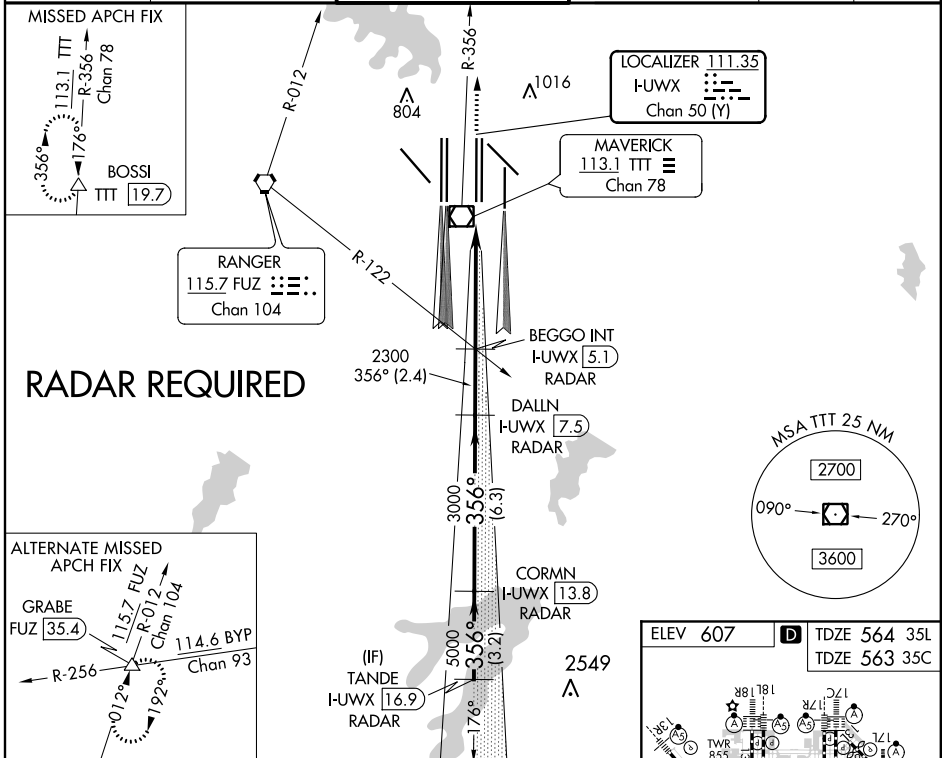
LOC/DME I-UWX 111.35 Chan 50 (Y)	APP CRS 356°	Rwy 35L Idg 13401 TDZE 564 Apt Elev 607	Rwy 35C Idg 13401 TDZE 563 Apt Elev 607
--	------------------------	--	--

ILS or LOC RWY 35L

DALLAS-FORT WORTH INTL (DFW)

DME or RADAR required. Simultaneous approach authorized with Rwy 36 L/R and Rwy 35R. Inop table does not apply to Sidestep Rwy 35C.	Rwy 35L MALS R	Rwy 35C ALS F-2	MISSED APPROACH: Climb to 2000 then climb to 3000 on TTT VOR/DME R-356 to BOSSI/TTT 19.7 DME and hold.

D-ATIS ARR 123.775 DEP 135.925	REGIONAL APP CON 127.075	DFW TOWER 126.55 127.5 EAST 124.15 134.9 WEST	GND CON 121.65 121.8 EAST 121.85 WEST	CLNC DEL 128.25	CPDLC
--	------------------------------------	---	---	---------------------------	-------



CATEGORY	A	B	C	D
S-ILS 35L	764/18 200 (200-½)			
S-LOC 35L	1000/24	436 (400-½)	1000/40	436 (400-¾)
SIDESTEP 35C	1000-1	437 (400-1)	1000-1½	1000-2
			437 (400-½)	437 (400-2)

HIRL all Rws					
REIL Rws 13L and 31L					
TDZ/CL all Rws except 13L, and 31L					
FAF to MAP 5.3 NM					
Knots	60	90	120	150	180
Min:Sec	5:18	3:32	2:39	2:07	1:46

SC-2, 31 JAN 2019 to 28 FEB 2019

SC-2, 31 JAN 2019 to 28 FEB 2019