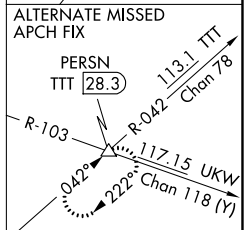
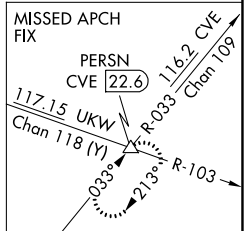
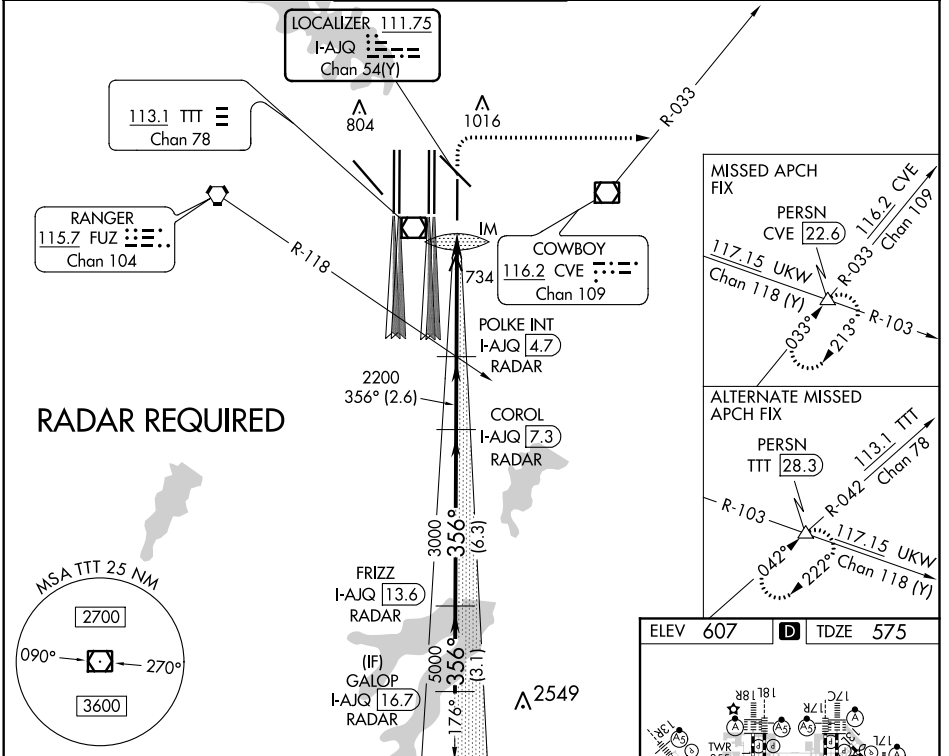


LOC/DME I-AJQ <b>111.75</b> Chan 54(Y)	APP CRS <b>356°</b>	Rwy Idg TDZE Apt Elev <b>8500</b> <b>575</b> <b>607</b>
--	------------------------	--

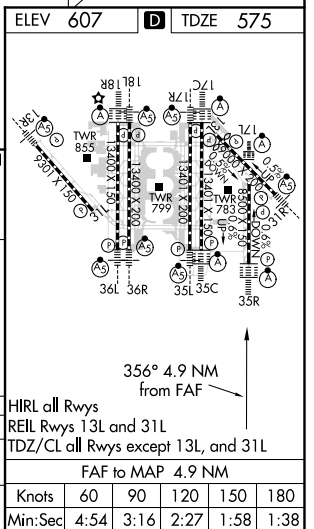
# ILS or LOC RWY 35R

DALLAS-FORT WORTH INTL (DFW)

Simultaneous approach authorized with Rwy 36L/R and Rwy 35L/C. DME required.		ALSF-2 	MISSED APPROACH: Climb to 1040 then climbing right turn to 3000 on heading 090° and CVE VOR/DME R-033 to PERSN/CVE 22.6 DME and hold.		
D-ATIS ARR <b>123.775</b> DEP <b>135.925</b>	REGIONAL APP CON <b>119.4</b>	DFW TOWER <b>126.55 127.5</b> EAST <b>124.15 134.9</b> WEST	GND CON <b>121.65 121.8</b> EAST <b>121.85</b> WEST	CLNC DEL <b>128.25</b>	CPDLC



GALOP I-AJQ 16.7 RADAR	FRIZZ I-AJQ 13.6 RADAR	COROL I-AJQ 7.3 RADAR	POLKE INT I-AJQ 4.7 RADAR	1040	3000	PERSN CVE R-033
5000 - 356° GS 3.00° TCH 58 VGS1 and ILS glidepath not coincident (VGS1 Angle 3.00/TCH 73).				*I-AJQ 1.1 I-AJQ DME ANTENNA IM I-AJQ 0.2 *LOC only		
3.1 NM 6.3 NM 2.6 NM 3.7 NM 1.1 0.1				A 2549		
CATEGORY	A	B	C	D		
S-ILS 35R	775/18 200 (200-½)					
S-LOC 35R	1040/24	465 (500-½)	1040/50	465 (500-1)		



SC-2, 31 JAN 2019 to 28 FEB 2019

SC-2, 31 JAN 2019 to 28 FEB 2019