

# KUSSO FIVE DEPARTURE (RNAV)

DALLAS-FORT WORTH, TEXAS

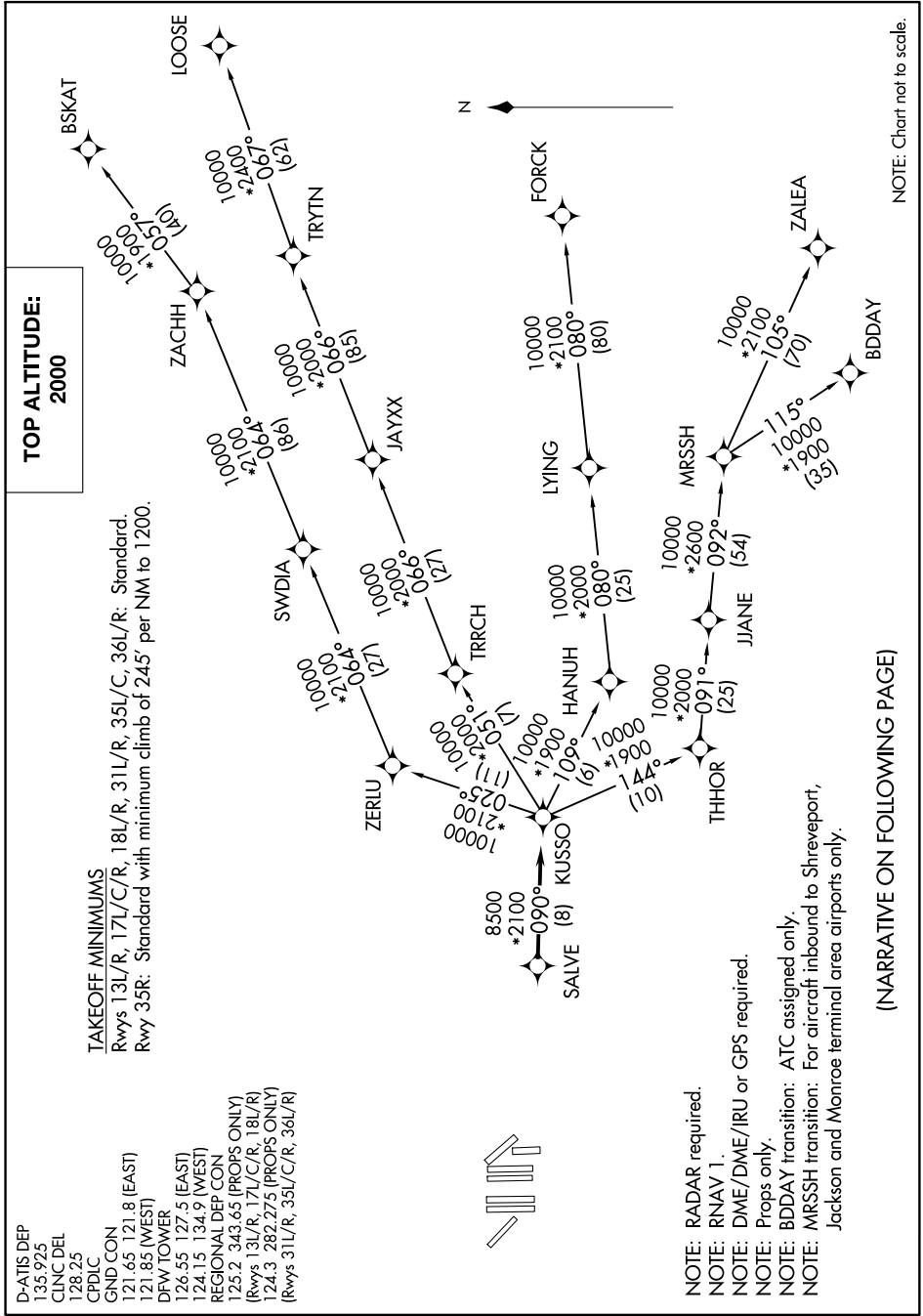
SC-2, 31 JAN 2019 to 28 FEB 2019

D-ATIS DEP  
135.925  
CLNC DEL  
128.25  
CPDLC  
GND CON  
121.65 121.8 (EAST)  
121.85 (WEST)  
DFW TOWER  
126.55 127.5 (EAST)  
124.15 134.9 (WEST)  
REGIONAL DEP CON  
125.2 343.65 (PROPS ONLY)  
124.3 282.275 (PROPS ONLY)  
(Rwys 31L/R, 35L/C/R, 36L/R)

### TAKEOFF MINIMUMS

Rwys 13L/R, 17L/C/R, 18L/R, 31L/R, 35L/C, 36L/R: Standard.  
Rwy 35R: Standard with minimum climb of 245' per NM to 1200.

**TOP ALTITUDE:  
2000**



# KUSSO FIVE DEPARTURE (RNAV)

(KUSSO5.KUSSO) 01FEB18

DALLAS-FORT WORTH, TEXAS

DALLAS-FORT WORTH INTL (DFW)

SC-2, 31 JAN 2019 to 28 FEB 2019