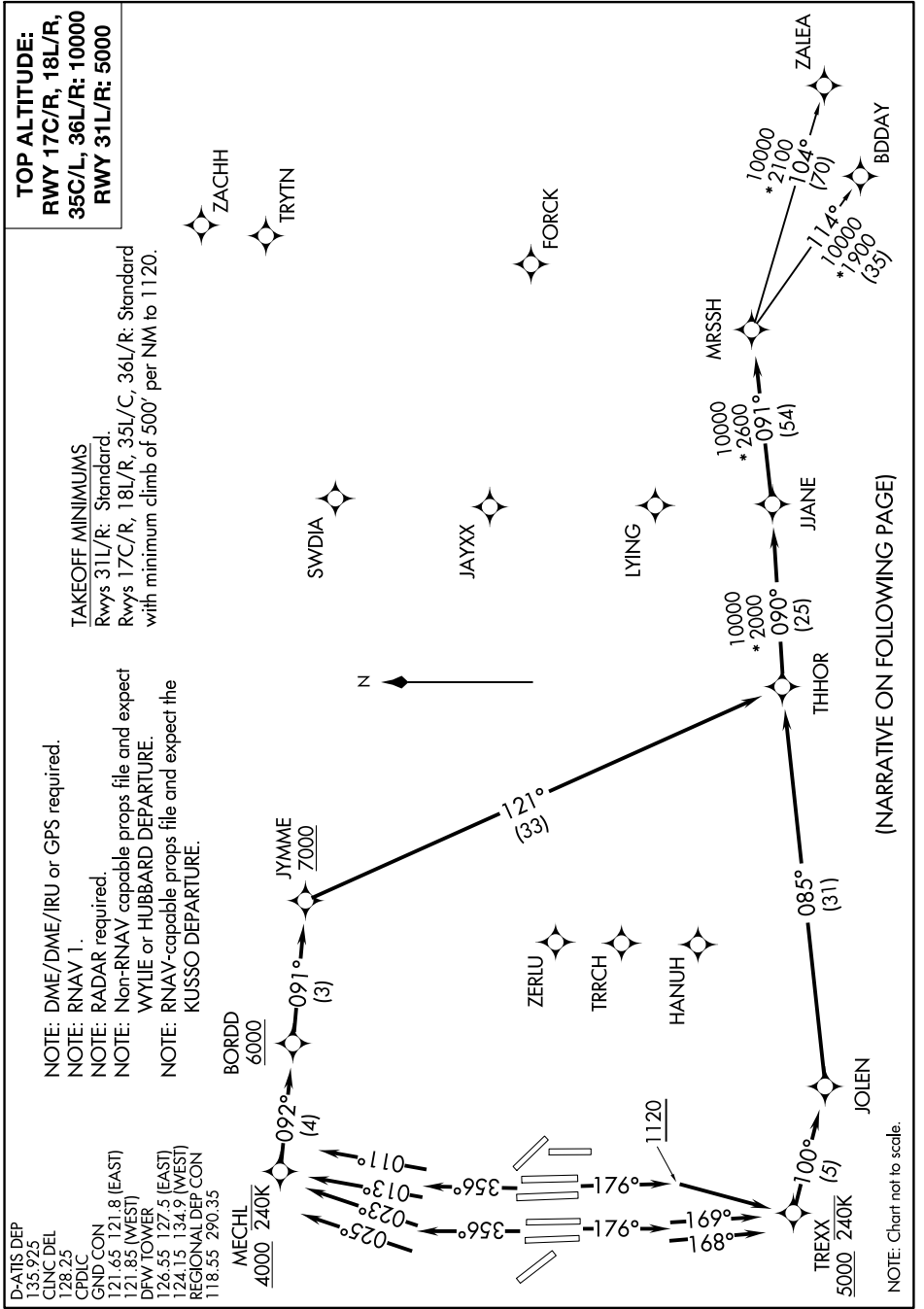


SC-2, 31 JAN 2019 to 28 FEB 2019



**TOP ALTITUDE:**  
 RWY 17C/R, 18L/R,  
 35C/L, 36L/R: 10000  
 RWY 31L/R: 5000

**TAKEOFF MINIMUMS**

Rwys 31L/R: Standard.  
 Rwys 17C/R, 18L/R, 35L/C, 36L/R: Standard  
 with minimum climb of 500' per NM to 1120.

NOTE: DME/DME/IRU or GPS required.

NOTE: RNAV 1.

NOTE: RADAR required.

NOTE: Non-RNAV capable props file and expect

NOTE: WYLLIE or HUBBARD DEPARTURE.

NOTE: RNAV-capable props file and expect the

NOTE: KUSSO DEPARTURE.

D-ATIS DEP  
 135.925  
 CUNC DEL  
 128.25  
 CRCL  
 GND CON  
 121.65 121.8 (EAST)  
 121.85 (WEST)  
 DFW TOWER  
 126.55 127.5 (EAST)  
 124.15 134.9 (WEST)  
 REGIONAL DEP CON  
 118.55 290.35

(NARRATIVE ON FOLLOWING PAGE)

NOTE: Chart not to scale.

SC-2, 31 JAN 2019 to 28 FEB 2019