

(NELYN5.NELYN) 18032

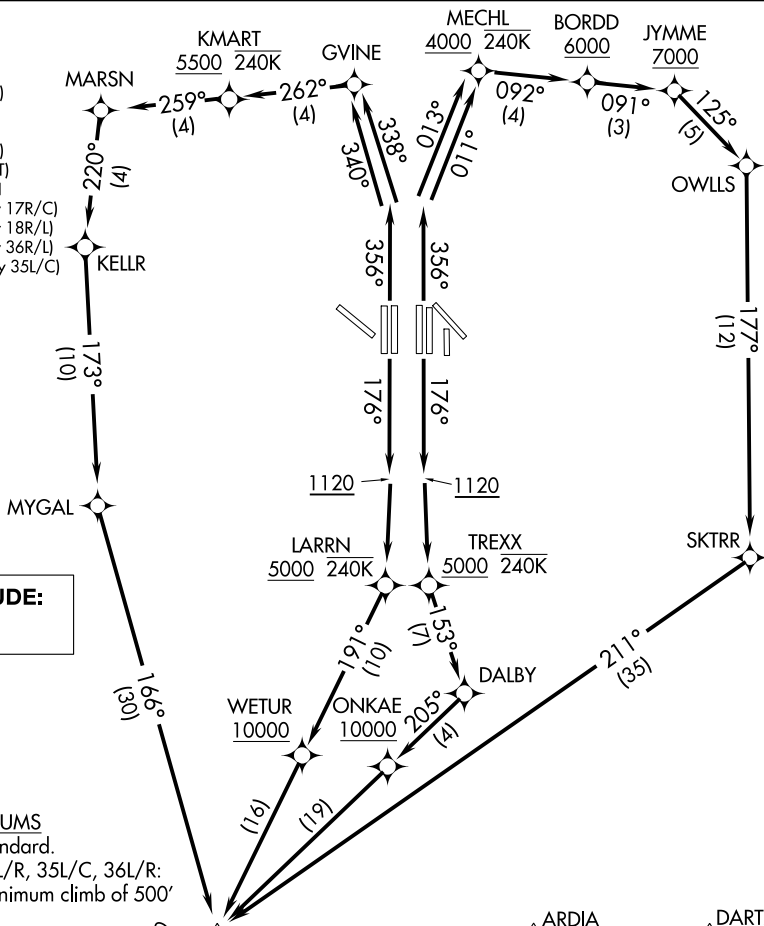
AL-6039 (FAA)

DALLAS-FORT WORTH INTL (DFW)

# NELYN FIVE DEPARTURE (RNAV)

DALLAS-FORT WORTH, TEXAS

D-ATIS DEP 135.925  
 CLNC DEL 128.25  
 CPDLC  
 GND CON  
 121.65 121.8 (EAST)  
 121.85 (WEST)  
 DFW TOWER  
 126.55 127.5 (EAST)  
 124.15 134.9 (WEST)  
 REGIONAL DEP CON  
 125.12 353.95 (Rwy 17R/C)  
 125.12 353.95 (Rwy 18R/L)  
 126.47 363.15 (Rwy 36R/L)  
 118.55 290.35 (Rwy 35L/C)



**TOP ALTITUDE:  
10000**

**TAKEOFF MINIMUMS**  
 Rwy 31L/R: Standard.  
 Rwy 17C/R, 18L/R, 35L/C, 36L/R:  
 Standard with minimum climb of 500'  
 per NM to 1120.

- NOTE: DME/DME/IRU or GPS required.
- NOTE: RNAV 1.
- NOTE: For use by turbojets only.
- NOTE: Turbojet aircraft landing San Antonio and Austin terminals areas expect the JASPA DEPARTURE.
- NOTE: Props file and expect KEENE or TRI-GATE DEPARTURE.
- NOTE: RADAR required.
- NOTE: SAN ANTONIO TRANSITION: For aircraft overflying CENTEX and SAN ANTONIO.
- NOTE: WACO TRANSITION: For aircraft inbound to Waco or Gray terminal airports.

(NARRATIVE ON FOLLOWING PAGE)

NOTE: Chart not to scale.

SC-2, 31 JAN 2019 to 28 FEB 2019

SC-2, 31 JAN 2019 to 28 FEB 2019

# NELYN FIVE DEPARTURE (RNAV)

(NELYN5.NELYN) 30APR15

DALLAS-FORT WORTH, TEXAS

DALLAS-FORT WORTH INTL (DFW)