

WAAS CH 45805 W35B	APP CRS 356°	Rwy Idg 13401 TDZE 564 Apt Elev 607
--	------------------------	--

RNAV (GPS) RWY 35L

DALLAS-FORT WORTH INTL (DFW)

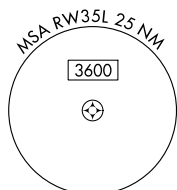
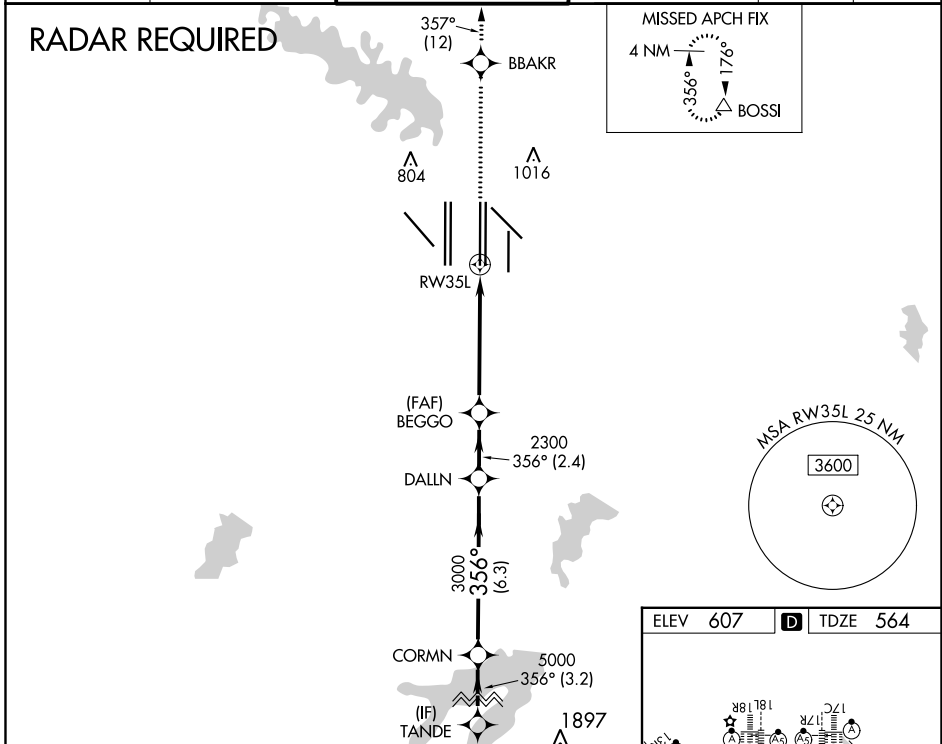
▼ For uncompensated Baro-VNAV systems, LNAV/VNAV NA below -4°C (25°F) or above 54°C (130°F). Simultaneous approach authorized with Rwy 36L/R and Rwy 35R. DME/DME RNP-0.3 NA. LNAV procedure NA during simultaneous operations. Use of FD or AP providing RNAV track guidance required during simultaneous operations.



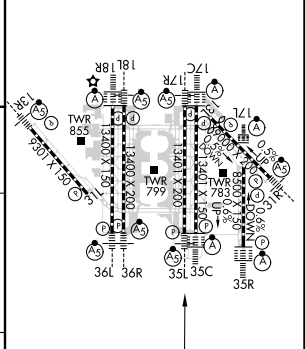
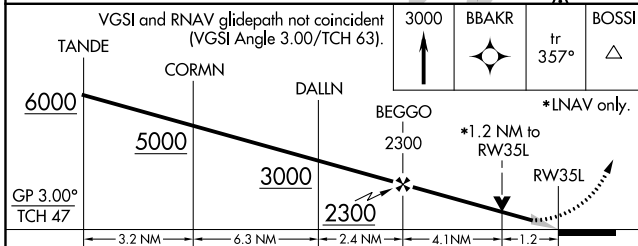
MISSED APPROACH:
Climb to 3000 direct BBAKR and on track 357° to BOSSI and hold.

D-ATIS ARR 123.775 DEP 135.925	REGIONAL APP CON 127.075	DFW TOWER 126.55 127.5 EAST 124.15 134.9 WEST	GND CON 121.65 121.8 EAST 121.85 WEST	CLNC DEL 128.25	CPDLC
--	------------------------------------	---	---	---------------------------	-------

RADAR REQUIRED



ELEV 607	D TDZE 564
----------	-------------------



CATEGORY	A	B	C	D
LPV DA	764/18 200 (200-1/2)			
LNAV/VNAV DA	928/40 364 (400-3/4)			
LNAV MDA	1020/24 456 (500-1/2)	1020/45 456 (500-7/8)		

HIRL all Rwys
REIL Rwy 13L and 31L
TDZ/CL all Rwy except 13L, and 31L

SC-2, 31 JAN 2019 to 28 FEB 2019

SC-2, 31 JAN 2019 to 28 FEB 2019