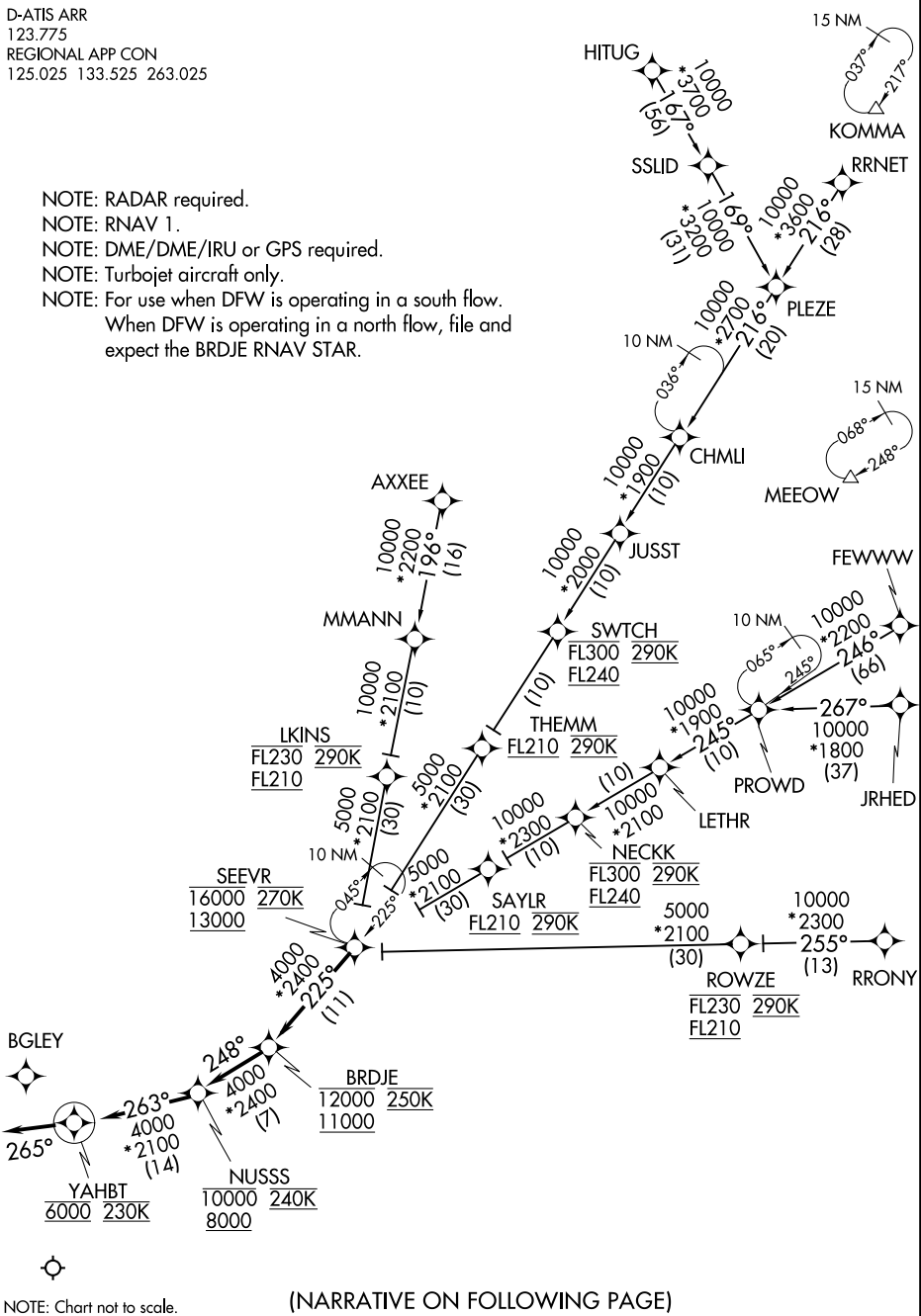


# SEVR FOUR ARRIVAL (RNAV)

D-ATIS ARR  
123.775  
REGIONAL APP CON  
125.025 133.525 263.025

- NOTE: RADAR required.
- NOTE: RNAV 1.
- NOTE: DME/DME/IRU or GPS required.
- NOTE: Turbojet aircraft only.
- NOTE: For use when DFW is operating in a south flow.  
When DFW is operating in a north flow, file and expect the BRDJE RNAV STAR.



SC-2, 31 JAN 2019 to 28 FEB 2019

SC-2, 31 JAN 2019 to 28 FEB 2019

NOTE: Chart not to scale.

(NARRATIVE ON FOLLOWING PAGE)

# SEVR FOUR ARRIVAL (RNAV)

(SEVR.SEEVR4) 05JAN17

DALLAS-FORT WORTH, TEXAS  
DALLAS-FORT WORTH INTL (DFW)