

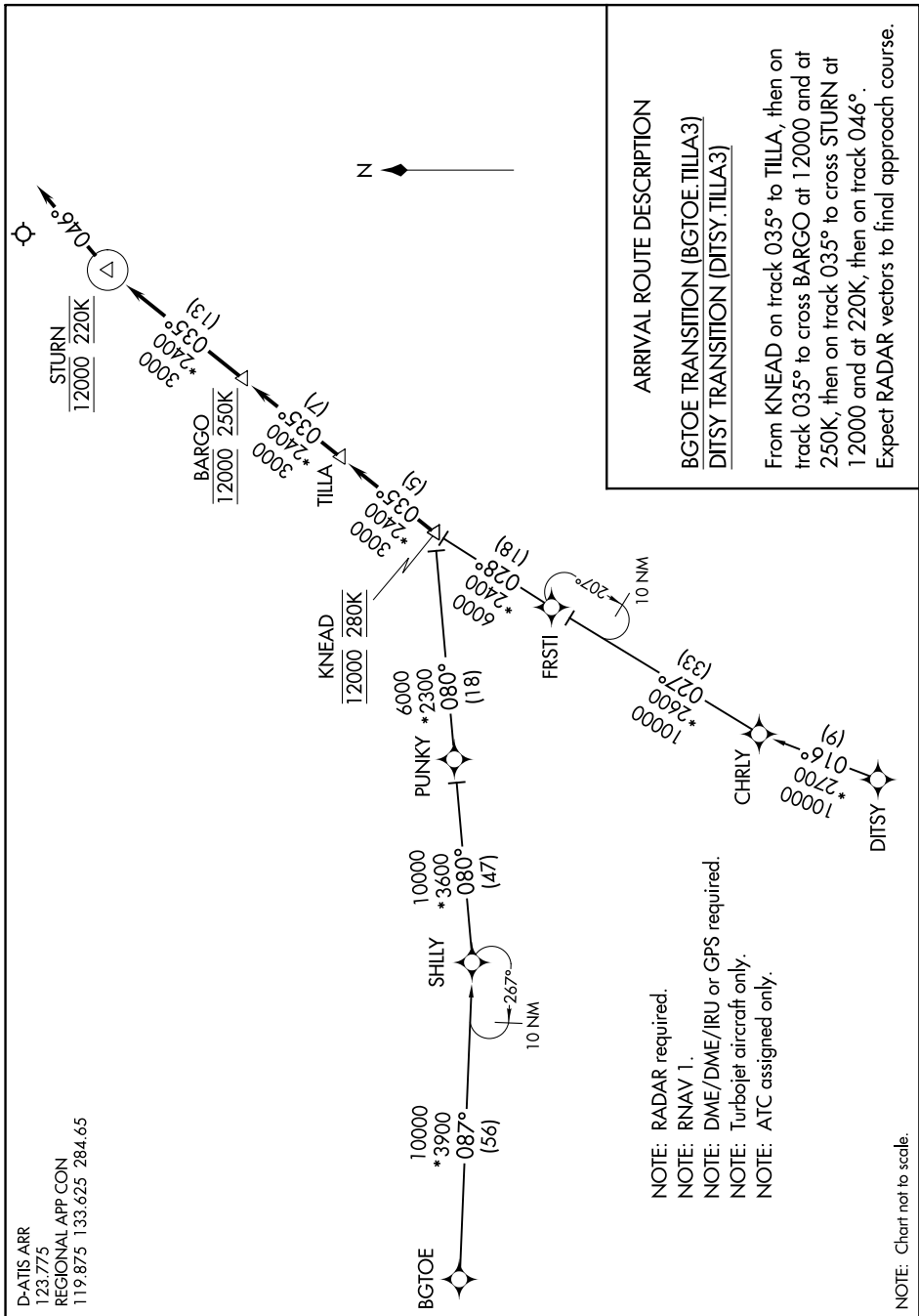
TILLA THREE ARRIVAL (RNAV)

SC-2, 31 JAN 2019 to 28 FEB 2019

D-ATIS ARR
123.775
REGIONAL APP CON
119.875 133.625 284.65

TILLA THREE ARRIVAL (RNAV)

(KNEAD.TILLA3) 31MART6



ARRIVAL ROUTE DESCRIPTION

BGTOE TRANSITION (BGTOE.TILLA3)
DITSY TRANSITION (DITSY.TILLA3)

From KNEAD on track 035° to TILLA, then on track 035° to cross BARGO at 12000 and at 250K, then on track 035° to cross STURN at 12000 and at 220K, then on track 046°. Expect RADAR vectors to final approach course.

- NOTE: RADAR required.
- NOTE: RNAV 1.
- NOTE: DME/DME/IRU or GPS required.
- NOTE: Turbojet aircraft only.
- NOTE: ATC assigned only.

NOTE: Chart not to scale.

SC-2, 31 JAN 2019 to 28 FEB 2019