

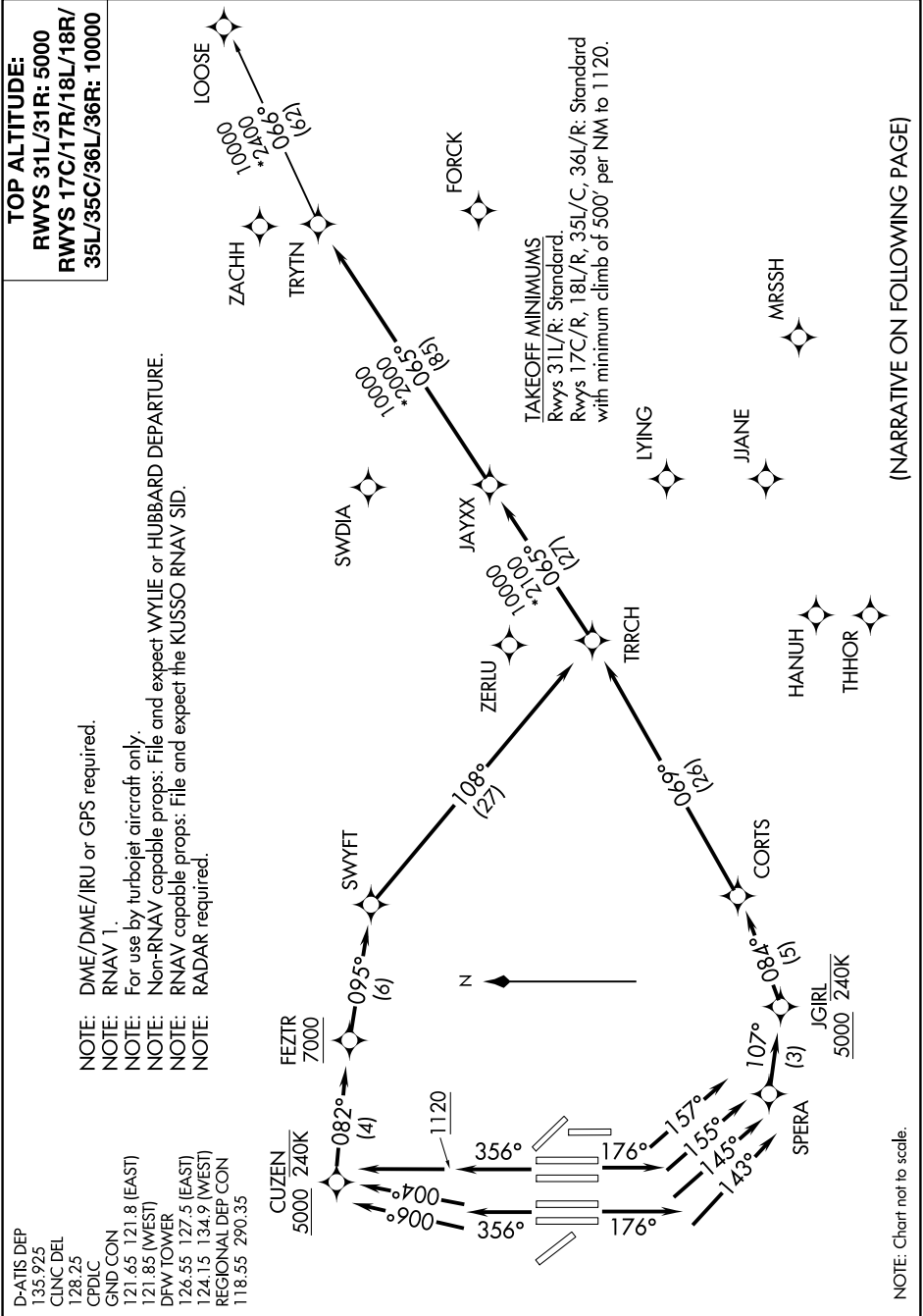
TRYTN THREE DEPARTURE (RNAV)

D-ATIS DEP
135.925
CLNC DEL
128.25
CPDLC
GND CON
121.65 121.8 (EAST)
121.85 (WEST)
DFW TOWER
126.55 127.5 (EAST)
124.15 134.9 (WEST)
REGIONAL DEP CON
118.55 290.35

NOTE: DME/DME/IRU or GPS required.
NOTE: RNAV 1.
NOTE: For use by turbojet aircraft only.
NOTE: Non-RNAV capable props: File and expect WYLIE or HUBBARD DEPARTURE.
NOTE: RNAV capable props: File and expect the KUSSO RNAV SID.NOTE: RADAR required.

TOP ALTITUDE:
RWYS 31L/31R: 5000
RWYS 17C/17R/18L/18R/
35L/35C/36L/36R: 10000

TAKEOFF MINIMUMS
Rwys 31L/R: Standard.
Rwys 17C/R, 18L/R, 35L/C, 36L/R: Standard
with minimum climb of 500' per NM to 1120.



(NARRATIVE ON FOLLOWING PAGE)

SC-2, 31 JAN 2019 to 28 FEB 2019

SC-2, 31 JAN 2019 to 28 FEB 2019

TRYTN THREE DEPARTURE (RNAV)

NOTE: Chart not to scale.