

# WSTEX TWO DEPARTURE (RNAV)

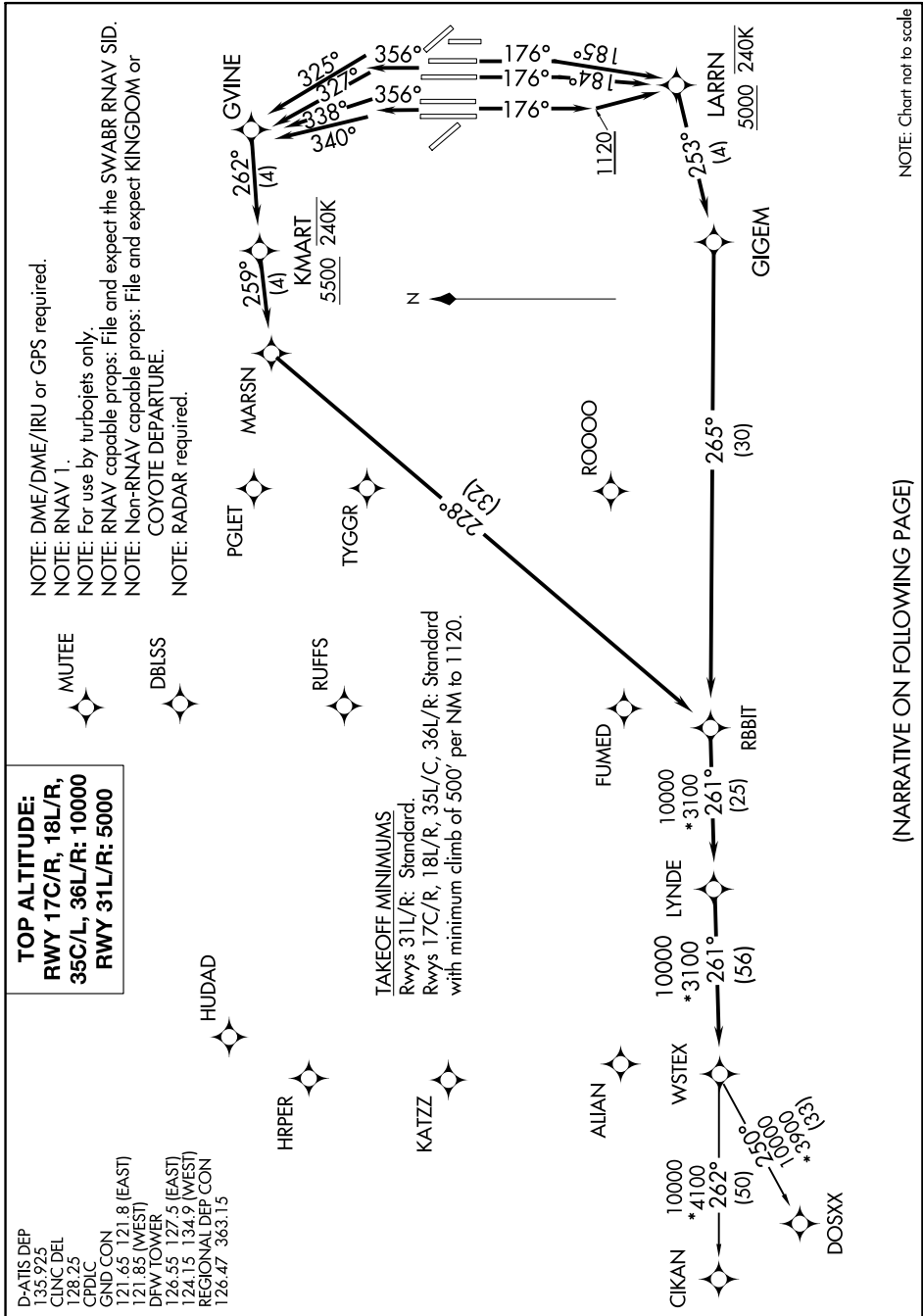
SC-2, 31 JAN 2019 to 28 FEB 2019

**TOP ALTITUDE:**  
**RWY 17C/R, 18L/R, 35C/L, 36L/R: 10000**  
**RWY 31L/R: 5000**

D-ATIS DEP 135.925  
 CLNC DEL 128.25  
 CPDLC  
 GND CON 121.65 121.8 (EAST)  
 121.85 (WEST)  
 DFW TOWER 126.55 127.5 (EAST)  
 124.15 134.9 (WEST)  
 REGIONAL DEP CON 126.47 363.15

NOTE: DME/DME/IRU or GPS required.  
 NOTE: RNAV 1.  
 NOTE: For use by turbojets only.  
 NOTE: RNAV capable props: File and expect the SWABR RNAV SID.  
 NOTE: Non-RNAV capable props: File and expect KINGDOM or COYOTE DEPARTURE.  
 NOTE: RADAR required.

TAKEOFF MINIMUMS  
 Rwy: 31L/R: Standard.  
 Rwys 17C/R, 18L/R, 35L/C, 36L/R: Standard  
 with minimum climb of 500' per NM to 1120.



NOTE: Chart not to scale

(NARRATIVE ON FOLLOWING PAGE)

SC-2, 31 JAN 2019 to 28 FEB 2019

# WSTEX TWO DEPARTURE (RNAV)