

# ANCHORAGE EIGHT DEPARTURE

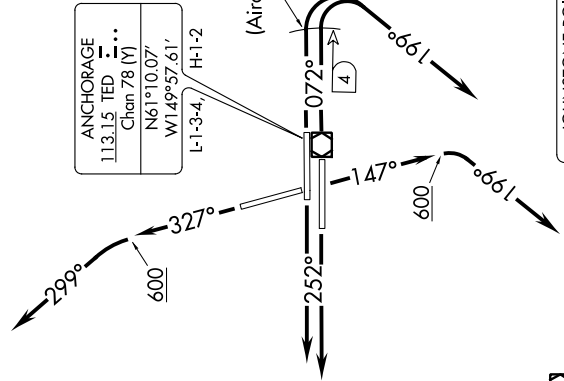
TED STEVENS ANCHORAGE INTL (ANC) (PANC)  
AL-1500 (FAA) ANCHORAGE, ALASKA

AK, 25 APR 2019 to 20 JUN 2019

D-ATIS 135.5  
 CUNC DEL 119.4 323.1  
 GND CON 121.9 338.25  
 ANCHORAGE TOWER 113.15 TED  
 ANCHORAGE DEP CON 118.3 257.8  
 118.6 290.5

ANCHORAGE  
 113.15 TED  
 Chan 78 (Y)  
 N61°10.07'  
 W149°57.61'  
 L-1-3-4, H-1-2

2000 or TED 4 DME  
 (Aircraft more than 20000 lbs  
 or Turboprop aircraft)  
 600 or TED 4 DME  
 (All other aircraft)



NODLE  
 N61°17.00'  
 W152°00.00'  
 13700  
 H-1-2

**TOP ALTITUDE:**  
 FL200

SPARREVOHN  
 117.2 SQA  
 Chan 119  
 N61°05.91'-W155°38.07'  
 L-3, H-1-2

NOTE: Aircraft cleared via NODLE WP  
 cross at or above 13700 for terrain.  
 NOTE: RADAR required.

ILIAMINA  
 411 III  
 DME Chan 91 (114.4)  
 N59°44.88'-W154°54.58'  
 L-3, H-1-2

KENAI  
 117.6 ENA  
 Chan 123  
 N60°36.88'  
 W151°11.71'  
 L-1-3-4, H-1-2

HOMER  
 114.6 HOM  
 Chan 93  
 N59°42.57'  
 W151°27.40'  
 L-1-2-3-4, H-1-2

JOHNSTONE POINT  
 116.7 JOH  
 Chan 114  
 N60°28.86'-W146°35.96'  
 L-1-3-4, H-1

MIDDLETON ISLAND  
 115.3 MDO  
 Chan 100  
 N59°25.31'-W146°21.00'  
 L-1-2-3, H-1

TAKEOFF MINIMUMS  
 Rwy 25L/R, 15: Standard.  
 Rwy 7L: Standard with minimum climb of 390' per NM to 3500.  
 Rwy 7R: Standard with minimum climb of 365' per NM to 3500.  
 Rwy 33: Standard, ATC climb of 400' per NM to 3000.

(NARRATIVE ON FOLLOWING PAGE)

NOTE: Chart not to scale.

AK, 25 APR 2019 to 20 JUN 2019

# ANCHORAGE EIGHT DEPARTURE