

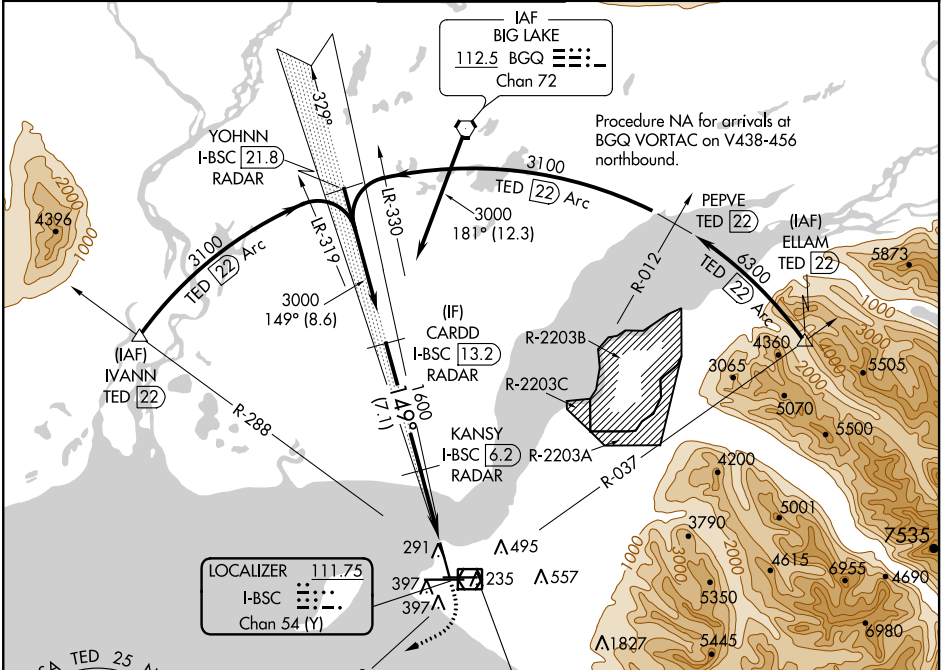
LOC/DME I-BSC 111.75 Chan 54 (Y)	APP CRS 149°	Rwy Idg 9898 TDZE 151 Apt Elev 151
--	------------------------	--

ILS RWY 15

TED STEVENS ANCHORAGE INTL (ANC) (PANC)

DME required.	ODALS	MISSED APPROACH: Climb to 800 then climbing right turn to 2500 on heading 200° and TED VOR/DME R-210 to JUKEP/TED 15 DME and hold.
<p>▼ Rwy 15 helicopter visibility reduction below RVR 4000 NA. Inop table does not apply.</p>		

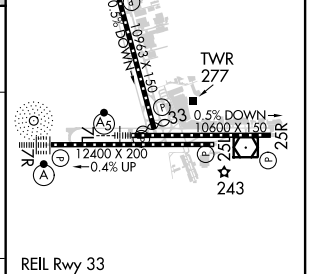
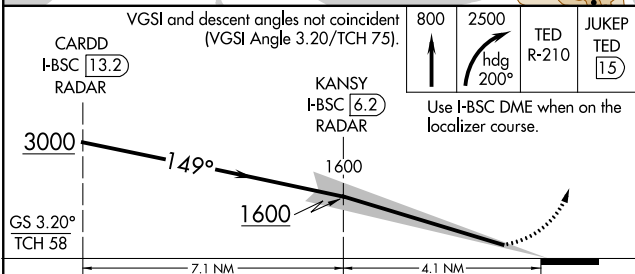
D-ATIS 135.5	ANCHORAGE APP CON 118.6 290.5	ANCHORAGE TOWER 118.3 257.8	GND CON 121.9 338.25	CLNC DEL 119.4 323.1
------------------------	---	---------------------------------------	--------------------------------	--------------------------------



AK, 25 APR 2019 to 20 JUN 2019

AK, 25 APR 2019 to 20 JUN 2019

ELEV 151	TDZE 151
<p>149° 4.1 NM from KANSY</p>	
<p>ANCHORAGE 113.15 TED 78 (Y)</p>	



CATEGORY	A	B	C	D
S-ILS 15	351/40	200 (200-¾)	401/40	250 (300-¾)

ILS RWY 15