

LOC/DME I-ANC <b>111.3</b> Chan 50	APP CRS <b>074°</b>	Rwy ldg <b>12400</b> TDZE <b>132</b> Apt Elev <b>151</b>
--	------------------------	--

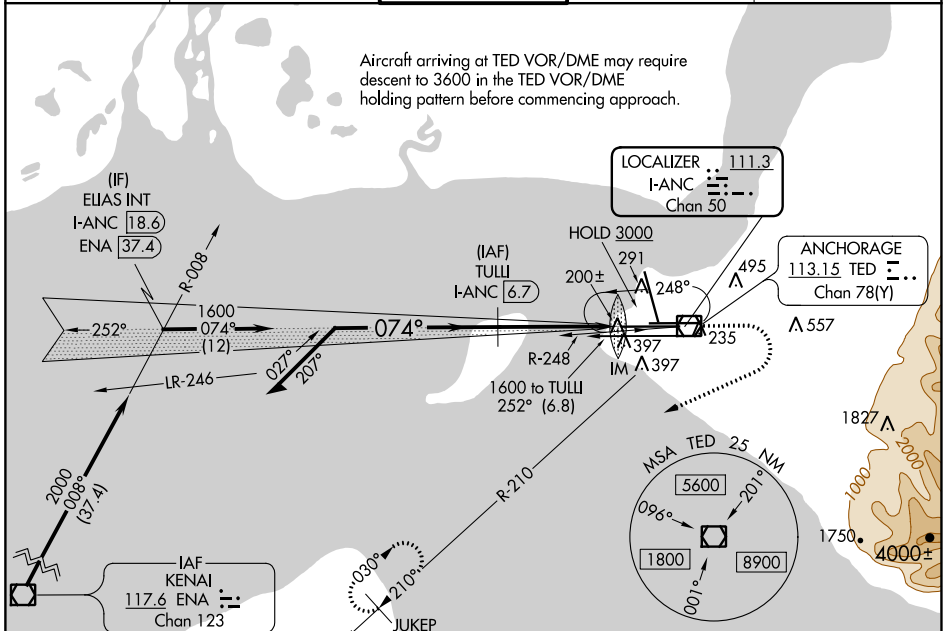
# ILS RWY 7R (CAT II & III)

TED STEVENS ANCHORAGE INTL (ANC) (PANC)

<p><b>▼</b> DME required. Rwy 7L threshold 6140 feet east of Rwy 7R threshold. CAT II: RVR 1000 authorized with specific OPSPEC, MSPEC, or LOA approval and use of autoland or HUD to touchdown.</p> <p><b>▲</b> MISSED APPROACH: Climb to 600 then climbing right turn to 2500 on TED VOR/DME R-210 to JUKEP/TED 15 DME and hold.</p>	<p>ALSF-2</p>
--	---------------

D-ATIS <b>135.5</b>	ANCHORAGE APP CON <b>118.6 290.5</b>	ANCHORAGE TOWER <b>118.3 257.8</b>	GND CON <b>121.9 338.25</b>	CLNC DEL <b>119.4 323.1</b>
------------------------	---	---------------------------------------	--------------------------------	--------------------------------

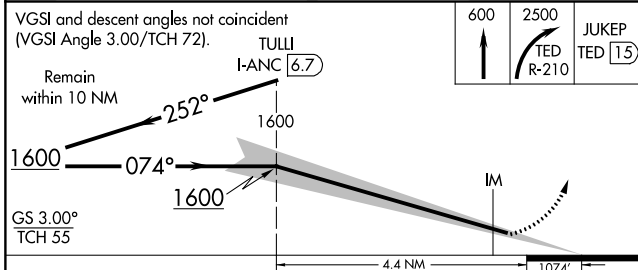
Aircraft arriving at TED VOR/DME may require descent to 3600 in the TED VOR/DME holding pattern before commencing approach.



AK, 25 APR 2019 to 20 JUN 2019

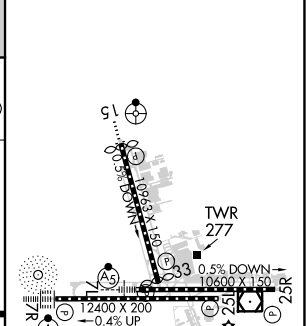
AK, 25 APR 2019 to 20 JUN 2019

ELEV 151	<b>D</b> TDZE 132
----------	-------------------



CATEGORY	A	B	C	D
S-ILS 7R	CAT II RA 115/12 100 DA 232			
S-ILS 7R	CAT III RVR 06			

**CATEGORY II & III ILS - SPECIAL AIRCREW & AIRCRAFT CERTIFICATION REQUIRED**



REIL Rwy 33  
TDZ/CL Rwys 7L and 7R  
HIRL all Rwys