

LOC/DME I-ANC 111.3 Chan 50	APP CRS 074°	Rwy Idg TDZE Apt Elev	7R 12400 132 151	7L 10600 128 151
--	------------------------	-----------------------------	--	--

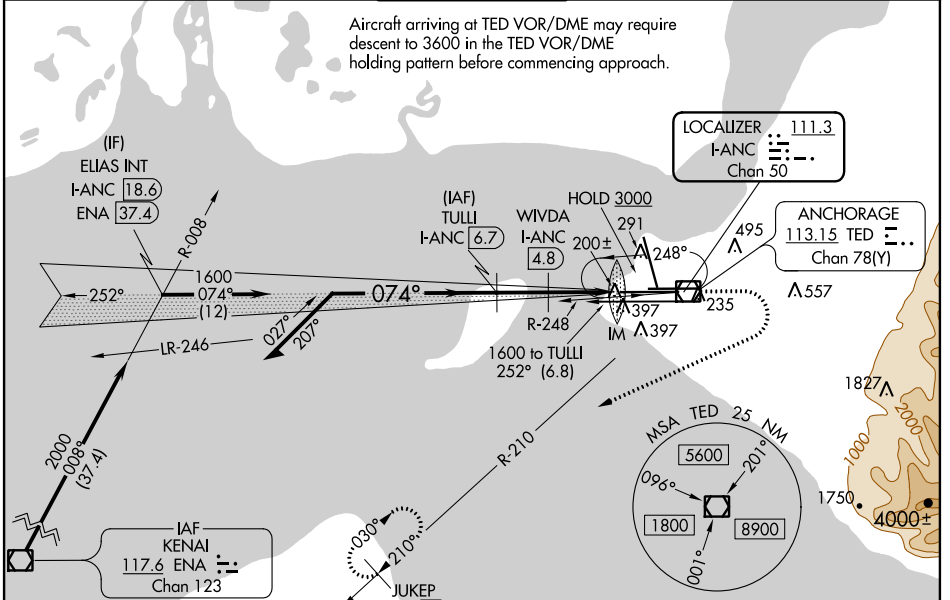
ILS or LOC RWY 7R

TED STEVENS ANCHORAGE INTL (ANC) (PANC)

<p>▼ DME required. For inop ALS, increase S-ILS 7R Cat E visibility to RVR 4000, and S-LOC 7R Cat E visibility to RVR 6000. Rwy 7L threshold 6140 feet east of Rwy 7R threshold. Inop table does not apply to Sidestep Rwy 7L Cat A, B and C.</p>	<p>ALS F-2 Rwy 7R</p>	<p>MALSR Rwy 7L</p>	<p>MISSED APPROACH: Climb to 600 then climbing right turn to 2500 on TED VOR/DME R-210 to JUKEP/TED 15 DME and hold.</p>
	<p>ANCHORAGE APP CON 118.6 290.5</p>		

D-ATIS 135.5	ANCHORAGE APP CON 118.6 290.5	ANCHORAGE TOWER 118.3 257.8	GND CON 121.9 338.25	CINC DEL 119.4 323.1
------------------------	---	---------------------------------------	--------------------------------	--------------------------------

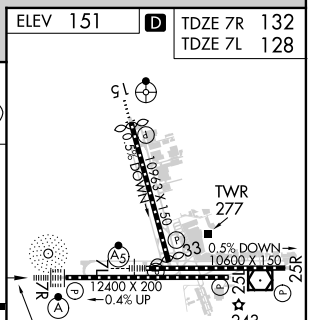
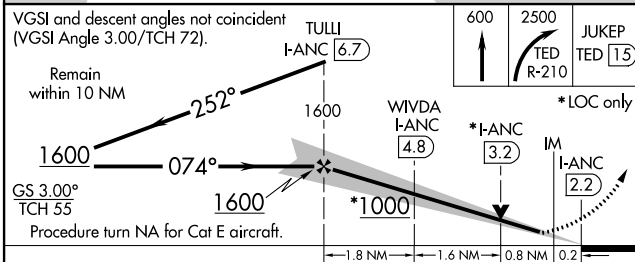
Aircraft arriving at TED VOR/DME may require descent to 3600 in the TED VOR/DME holding pattern before commencing approach.



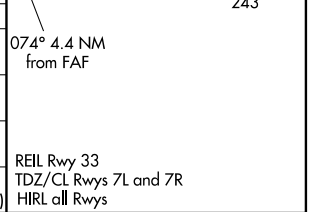
AK, 25 APR 2019 to 20 JUN 2019

AK, 25 APR 2019 to 20 JUN 2019

ELEV 151	TDZE 7R 132	TDZE 7L 128
----------	-------------	-------------



CATEGORY	A	B	C	D	E
S-ILS 7R	332/18 200 (200-½)				
S-LOC 7R	520/24 388 (400-½)				
S-LOC SIDESTEP 7L	520/50 392 (400-1)		520-1½ 392 (400-1½)		
CIRCLING	700-1 549 (600-1)		700-1½ 549 (600-1½)	800-2 649 (700-2)	920-2¾ 769 (800-2¾)



ILS or LOC RWY 7R