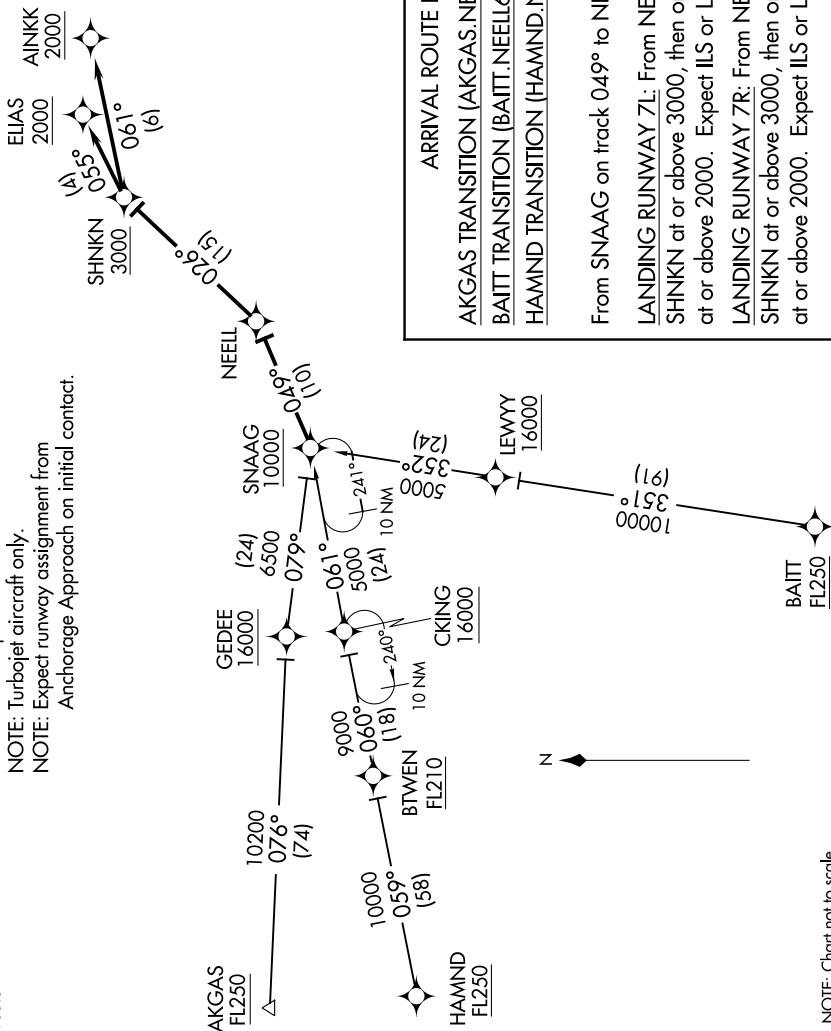


AK, 25 APR 2019 to 20 JUN 2019

ANCHORAGE APP CON  
126.4 270.25  
D-ATIS  
135.5

- NOTE: RNAV 1.
- NOTE: GPS required.
- NOTE: Turbojet aircraft only.
- NOTE: Expect runway assignment from Anchorage Approach on initial contact.



**ARRIVAL ROUTE DESCRIPTION**  
 AKGAS TRANSITION (AKGAS.NEELL6)  
 BAITT TRANSITION (BAITT.NEELL6)  
 HAMND TRANSITION (HAMND.NEELL6)

From SNAAG on track 049° to NEELL.  
 LANDING RUNWAY 7L: From NEELL on track 026° to cross SHNKN at or above 3000, then on track 061° to cross AINNK at or above 2000. Expect ILS or LOC/DME RWY 7L approach.  
 LANDING RUNWAY 7R: From NEELL on track 026° to cross SHNKN at or above 3000, then on track 055° to cross ELIAS at or above 2000. Expect ILS or LOC/DME RWY 7R approach.

NOTE: Chart not to scale.

AK, 25 APR 2019 to 20 JUN 2019