

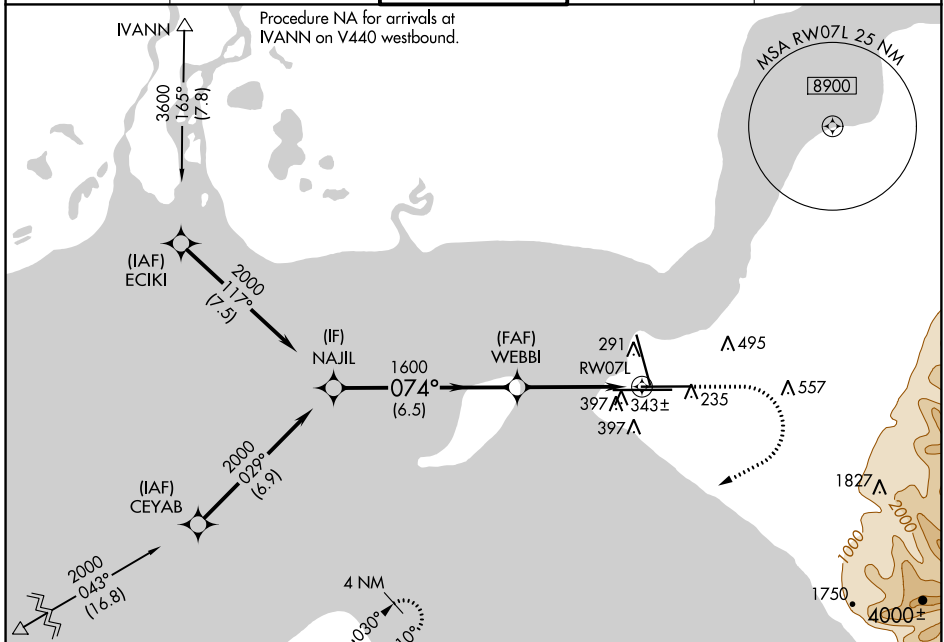
WAAS CH 86215 W07B	APP CRS 074°	Rwy Idg 10600 TDZE 128 Apt Elev 151
--	------------------------	--

RNAV (GPS) RWY 7L

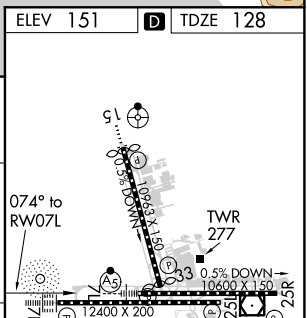
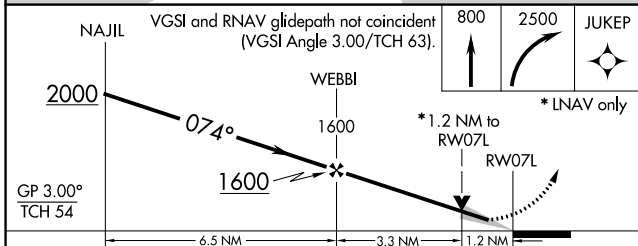
TED STEVENS ANCHORAGE INTL (ANC) (PANC)

For uncompensated Baro-VNAV systems, LNAV/VNAV NA below -24°C (-12°F) or above 42°C (107°F). DME/DME RNP-0.3 NA.	MALSR	MISSED APPROACH: Climb to 800 then climbing right turn to 2500 direct JUKEP and hold.

D-ATIS 135.5	ANCHORAGE APP CON 118.6 290.5	ANCHORAGE TOWER 118.3 257.8	GND CON 121.9 338.25	CLNC DEL 119.4 323.1
------------------------	---	---------------------------------------	--------------------------------	--------------------------------



Procedure NA for arrivals at IVANN on V440 westbound.
 Procedure NA for arrivals at GASTO on V462 southwest bound.



CATEGORY	A	B	C	D
LPV DA	328/18 200 (200-½)			
LNAV/VNAV DA	601/60 473 (500-1¼)			
LNAV MDA	600/24	472 (500-½)	600/50	472 (500-1)
CIRCLING	700-1	549 (600-1)	700-1½ 549 (600-1½)	800-2 649 (700-2)

ELEV 151	D TDZE 128
REIL Rwy 33 TDZ/CL Rwys 7L and 7R HIRL all Rwys	

AK, 25 APR 2019 to 20 JUN 2019

AK, 25 APR 2019 to 20 JUN 2019