

APP CRS	Rwy Idg	10498
329°	TDZE	121
	Apt Elev	151

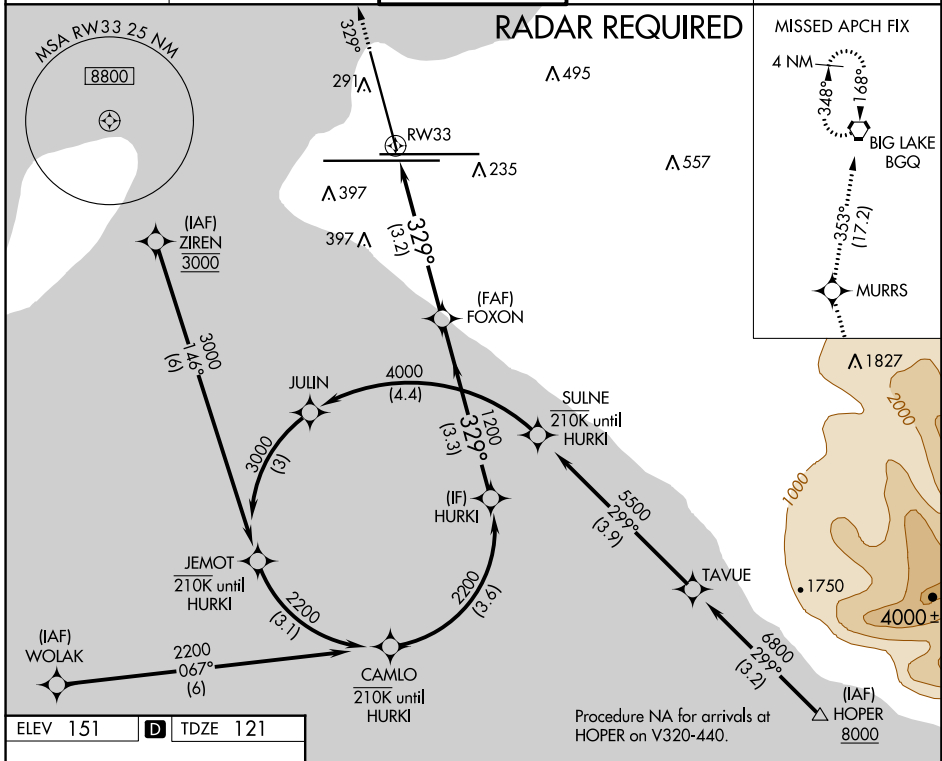
RNAV (RNP) RWY 33

TED STEVENS ANCHORAGE INTL (ANC) (PANC)

RNP AR APCH. RF required.
 For uncompensated Baro-VNAV systems, procedure NA below -17°C or above 54°C.

MISSED APPROACH: Climb to 4000 on the RNAV missed approach route to BQG VORTAC and hold.

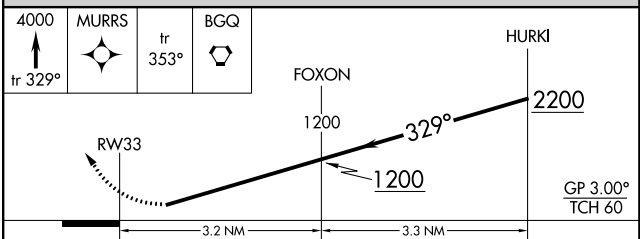
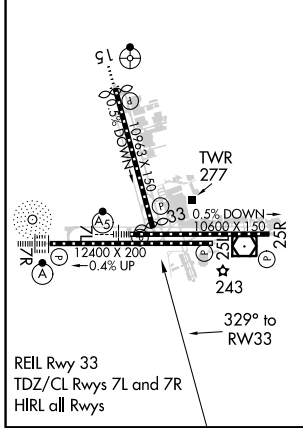
D-ATIS 135.5	ANCHORAGE APP CON 118.6 290.5	ANCHORAGE TOWER 118.3 257.8	GND CON 121.9 338.25	CLNC DEL 119.4 323.1
------------------------	---	---------------------------------------	--------------------------------	--------------------------------



AK, 25 APR 2019 to 20 JUN 2019

AK, 25 APR 2019 to 20 JUN 2019

ELEV 151	D	TDZE 121
----------	----------	----------



CATEGORY	A	B	C	D
RNP 0.11 DA		463-1	342 (400-1)	
RNP 0.20 DA		525-1 1/8	404 (400-1 1/8)	
RNP 0.30 DA		687-1 5/8	566 (600-1 5/8)	

AUTHORIZATION REQUIRED