

RNAV (RNP) Z RWY 7R

TED STEVENS ANCHORAGE INTL (ANC) (PANC)

APP CRS	Rwy Idg	12400
074°	TDZE	132
	Apt Elev	151

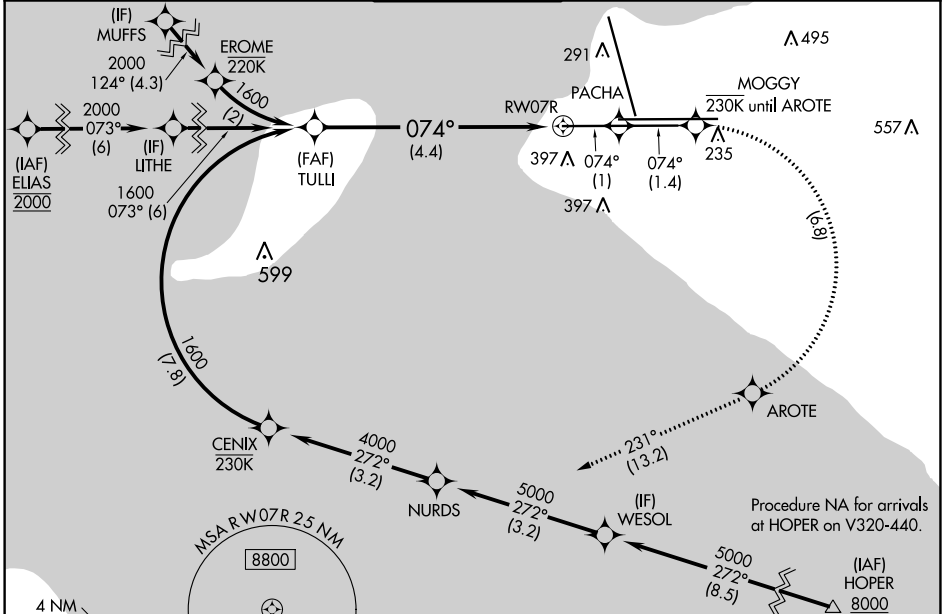
RNP AR APCH, RF required.

▼ Missed approach requires RNP less than 1.0.
 For uncompensated Baro-VNAV systems, procedure NA below -18°C (0°F) or above 54°C (130°F).
 For inop ALS, increase RNP 0.30 all Cats visibility to 1½ SM.

ALSF-2

MISSED APPROACH: Climb to 3000 on the missed approach route to JUKEP and hold.

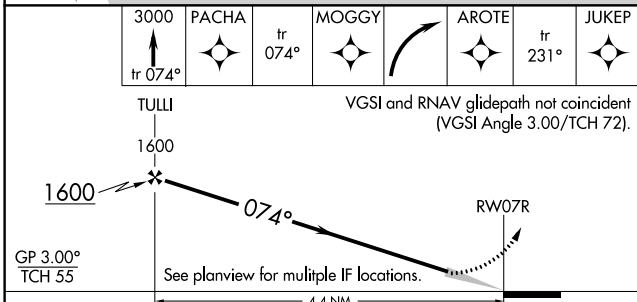
D-ATIS	ANCHORAGE APP CON	ANCHORAGE TOWER	GND CON	CLNC DEL
135.5	118.6 290.5	118.3 257.8	121.9 338.25	119.4 323.1



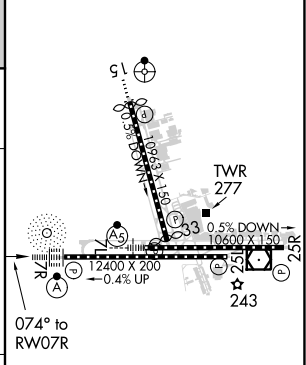
AK, 25 APR 2019 to 20 JUN 2019

AK, 25 APR 2019 to 20 JUN 2019

RADAR REQUIRED



ELEV 151	TDZE 132
----------	----------



CATEGORY	A	B	C	D
RNP 0.30 DA	562/50 430 (500-1)			

AUTHORIZATION REQUIRED

REIL Rwy 33
 TDZ/CL Rwys 7L and 7R
 HIRL all Rwys