

WAAS CH <b>81815</b> <b>W07A</b>	APP CRS <b>074°</b>	Rwy Idg <b>12400</b> TDZE <b>132</b> Apt Elev <b>151</b>
--	------------------------	--

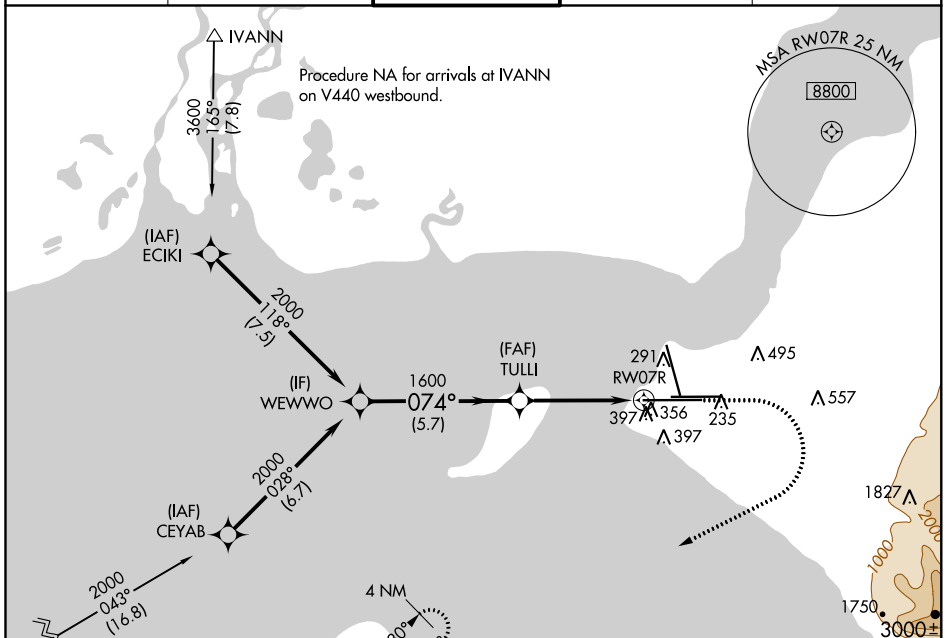
# RNAV (GPS) Y RWY 7R

TED STEVENS ANCHORAGE INTL (ANC) (PANC)

**▼** For uncompensated Baro-VNAV systems, LNAV/VNAV NA below -24°C (-11°F) or above 43°C (109°F). DME/DME RNP-0.3 NA. For inop ALS, increase LNAV/VNAV all Cats visibility to 1 3/4 SM, and LNAV Cat C and D visibility to 1 3/8 SM.

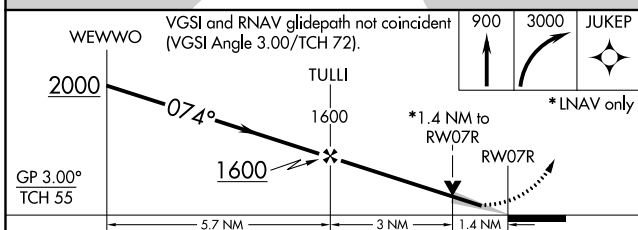
ALSF-2 MISSED APPROACH: Climb to 900 then climbing right turn to 3000 direct JUKEP and hold.

D-ATIS <b>135.5</b>	ANCHORAGE APP CON <b>118.6 290.5</b>	ANCHORAGE TOWER <b>118.3 257.8</b>	GND CON <b>121.9 338.25</b>	CLNC DEL <b>119.4 323.1</b>
------------------------	---	---------------------------------------	--------------------------------	--------------------------------

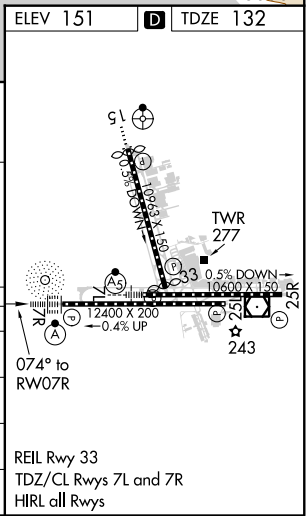


GASTO Procedure NA for arrivals at GASTO on V462 southwest bound.

JUKEP Procedure NA for arrivals at IVANN on V440 westbound.



CATEGORY	A	B	C	D
LPV DA		332/18	200 (200-1/2)	
LNAV/VNAV DA		660-1 3/8	528 (600-1 3/8)	
LNAV MDA	640/24	508 (500-1/2)	640/55	508 (500-1)
CIRCLING	740-1	589 (600-1)	740-1 1/2 589 (600-1 1/2)	800-2 649 (700-2)



AK, 25 APR 2019 to 20 JUN 2019

AK, 25 APR 2019 to 20 JUN 2019